



Paris

Photo: Paul Dufour/Unsplash.com



Ioan Panaite/Shutterstock.com



Rrrainbow/Shutterstock.com



Joe deSousa/CC BY 2.0/Wikimedia

Few cities match the iconic status that Paris boasts in the imagination of travellers. In fashion, gastronomy, and the arts, she is queen. As you visit the different quarters of the City of Light, her moods shift from gritty to sophisticated, from Haute Couture to punk. There is always something new to discover in Paris beyond the legendary sights and museums we all know so well. This fabled city has a way of getting under your skin and feeling instantly familiar to all who wander her hypnotic streets and linger at her inviting cafés.

Featured



Palace of Versailles

The town of Versailles is a wealthy Parisian suburb and municipality, locate...



Moulin Rouge

A trip to Paris is not complete without a visit to the legendary Moulin Roug...



Louis Vuitton Foundation

Apart from the undeniably breathtaking architecture, the Louis Vuitton Found...



Luxembourg Garden

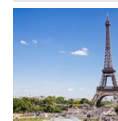
Nestled in the heart of Paris, the Jardin du Luxembourg, colloquially known ...



Catacombs of Paris

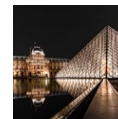
Installed in the tunnels of former quarries, in the heart of Paris, the Cata...

Top 5



Eiffel Tower

Built by Gustave Eiffel for the 1889 World's Fair to commemorate the centenn...



Louvre Museum

The Musée du Louvre, among the world's largest museums, houses a vast collec...



Arc de Triomphe

Commissioned by emperor Napoleon Bonaparte in 1806 on account of the French ...



Cathédrale Notre-Dame de Paris

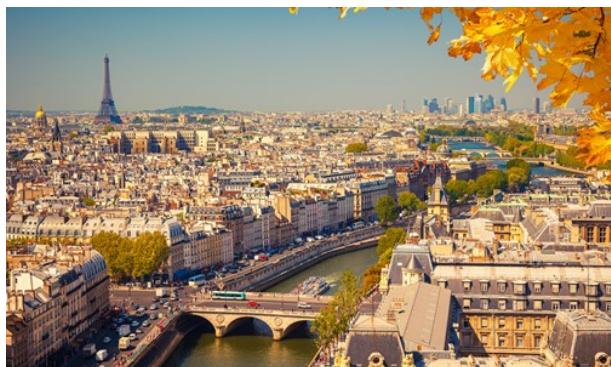
With its 10 million yearly visitors, Notre-Dame was the



Montmartre

Montmartre is one of the most charming and bohemian neighbourhoods in Paris,...

THE CITY



S.Borisov/Shutterstock.com

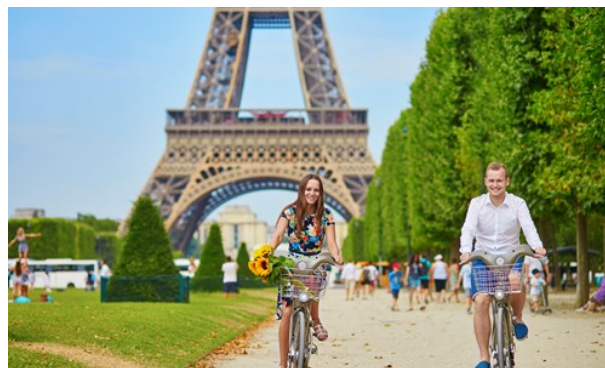
Writers, travellers, artists, photographers, and filmmakers have tried to capture the magic of the French capital for hundreds of years. Time and time again, they have failed.

It may be possible to understand and admire the magnificence of its architectural splendours, the appeal of its long tree-lined boulevards, and the draw of its vast, green parks, but that unique feeling of strolling through this open-air museum on a clear night cannot be reproduced by any medium. Paris is a city that must be experienced first-hand.

Instantly recognisable for its iconic architecture, the City of Light is a vibrant metropolis in constant change. Though perennial monuments like the Eiffel Tower, Arc de Triomphe, and Notre Dame Cathedral are a must, as are world-renowned museums such as the Louvre and Musée d'Orsay, there are wonders to be found on every corner. From the trendy bars, boutiques, and galleries of Marais to the artsy and bohemian feel of Montmartre to the grandiose elegance along the Seine - there is plenty for all tastes, a full range extending from earthy grit to over-the-top sophistication, but always with an emphatic and inimitable Parisian flavour.

A pioneer in design of all kinds, Paris is consistently at the forefront of innovation in everything from the arts and culture to fashion and gastronomy. Be it for shopping, dining, or sightseeing, it is hard to find a better place than this, the world's most visited city.

DO & SEE

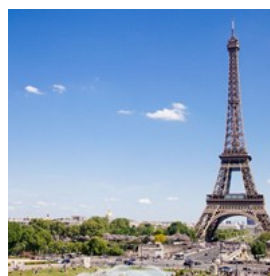


Ekaterina Pokrovsky/Shutterstock.com

There is never enough time to take in everything that Paris has to offer. Visiting the sights and museums is immersive, awe-inspiring, and could easily keep you occupied for months. But visitors are best rewarded by simply venturing out into the city. One thing is for sure, you will never run out of things to see, do, and experience in Paris.

To help you save time and money, our travel experts have listed below the best attractions in Paris as well as things you should not miss while visiting the French capital.

Eiffel Tower



Built by Gustave Eiffel for the 1889 World's Fair to commemorate the centennial of the French Revolution, the Eiffel Tower is now one of the world's most recognisable monuments as well as one of the most visited ones, attracting nearly seven million visitors every year.

It towers over the city at 324 metres (1,063 feet) and weighs over 10,000 tons, making it both an imposing monument and an engineering marvel. Climb all the way to the top for a breathtaking view of the City of Light.

Photo: Anthony DELANOIX/Unsplash

Address: Champ de Mars, 5 Avenue Anatole France, Paris

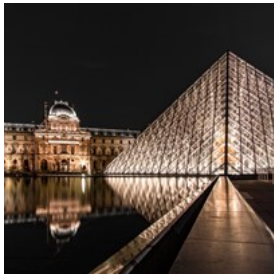
Public Transport: Bus 82, 42: "Tour Eiffel". Metro line 6:

"Bir-Hakeim". Metro line 9: "Trocadéro".

Opening hours: Daily 9:30am-10:45pm

Internet: www.toureiffel.paris/en

Louvre Museum



The Musée du Louvre, among the world's largest museums, houses a vast collection of masterpieces, including the Mona Lisa, Venus de Milo, and works by Rembrandt, Vermeer, and Caravaggio. Its iconic entrance is adorned by the 21-metre-high glass Pyramide du Louvre. With 35,000 paintings, sculptures, and artefacts spanning from Assyrian to Islamic art, as well as antiquities from prehistory to the 19th century, the Louvre stands as a cultural treasure trove in the heart of Paris.

Photo: Michael Fousert/Unsplash

Address: Musée du Louvre, Paris

Public Transport: Metro line 1, 7: "Palais Royal-Musée du Louvre"

Opening hours: Wed-Mon 9am-6pm, Thu until 9:45pm, Tue closed

Phone: +33 1 40 20 53 17

Internet: www.louvre.fr/en

Email: info@louvre.fr

Arc de Triomphe



Commissioned by emperor Napoleon Bonaparte in 1806 on account of the French victory at the Battle of Austerlitz, the Arc de

Triomphe took 30 years to be erected and was then inaugurated by the French king Louis-Philippe in 1836, 15 years after Napoleon's death. Standing tall at 50 metres (164 feet), it is one of the most famous monuments in Paris.

Located at the centre of Place Charles de Gaulle at the western end of the Champs-Élysées Avenue, the arch honours those who fought and died for France in the French Revolution and Napoleonic Wars. Under its vault, lies the Tomb of the Unknown Soldier from the First World War.

Photo: Benh LIEU SONG/Wikimedia Commons(image cropped)

Address: Place Charles de Gaulle, Paris

Public Transport: Metro line 1, 2, 6:

"Charles-de-Gaulle-Etoile".

Opening hours: Sat-Thu 10am-10:15pm, Fri closed

Phone: +33 1 55 37 73 77

Internet: www.paris-arc-de-triomphe.fr/en

Cathédrale Notre-Dame de Paris



With its 10 million yearly visitors, Notre-Dame was the most visited site in Paris until a devastating fire ravaged a significant part of the cathedral in

April 2019. The structure of the building itself was preserved, as well as most works of art that used to be contained inside.

The place has always been the religious centre of the city: the Celts considered the grounds

sacred, the Romans built a temple here, the Christians, a basilica, and the last religious structure before the Notre-Dame cathedral was erected was a Romanesque church. The Gothic cathedral of Notre-Dame, finished in 1345, is a tectonic masterpiece. The massive structure is 128 metres (420 feet) long and has two 69-metre-tall (226 feet) towers.

Photo: TTstudio/Shutterstock.com

Address: 6 Parvis Notre-Dame - Place Jean-Paul II, Paris

Public Transport: Metro line 4: "Cit  ", "Saint-Michel"

Phone: +33 1 42 34 56 10

Internet: www.notredamedeparis.fr

More Info: The cathedral is set to reopen on December 8, 2024

Montmartre



Montmartre is one of the most charming and bohemian neighbourhoods in Paris, with the white-domed Sacr  -C  ur Basilica and its beacon atop the 130-metre Montmartre hill, being the highest point in Paris. Montmartre is famous for the caf  s and studios of many great artists, such as Dal  , Monet, and Picasso. It is also easily recognisable as the filming location of the movie 'Am  lie'. Other famous places in the area are the Moulin Rouge and Lapin Agile, downhill to the southwest, in the red-light district of Pigalle.

Photo: Kazuo ota/Unsplash

Public Transport: Metro line 2: "Blanche", "Pigalle", "Anvers".

Metro line 12: "Abbesses".

Sacr  -C  ur Basilica



Perched atop Montmartre hill, the Basilica of the Sacred Heart of Paris, or simply Sacr  -C  ur, is a Roman Catholic church and minor basilica with a majestic view of Paris. Inaugurated in 1914, it is dedicated to the Sacred Heart of Jesus and boasts over 500 statues. Its iconic status makes it a regular sight on film.

Photo: Sergei25/Shutterstock.com

Address: 35 rue du Chevalier de la Barre, Paris

Public Transport: Metro line 12: "Jules Joffrin", "Pigalle", "Abbesses". Metro line 2: "Pigalle", "Anvers".

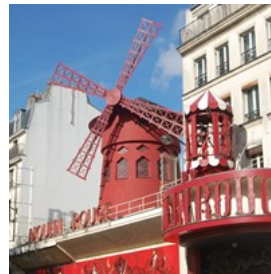
Opening hours: Daily 6am-10:30pm

Phone: +33 1 53 41 89 00

Internet: www.sacre-coeur-montmartre.com/en/

Email: basilique@sacre-coeur-montmartre.com

Moulin Rouge



A trip to Paris is not complete without a visit to the legendary Moulin Rouge. Since 1889, this iconic Parisian landmark has held the title of the most famous cabaret in the world, thanks to its French can-can and the larger-than-life shows featuring expertly choreographed dancing, elaborate sets, and glamorous costumes. Sip on French Champagne, enjoy dinner in a beautiful Belle   poque venue, and experience the show F  erie, which you are sure to remember for years to come.

Photo: Milena Nadier/Shutterstock

Address: 82 Boulevard de Clichy, Paris

Public Transport: Metro stop: Blanche

Phone: +33 1 53 09 82 82

Internet: www.moulinrouge.fr/en/homepage

Email: information@moulinrouge.fr

Seine River Cruise



Boat cruises on the Seine embark at the foot of the Eiffel Tower and take you through the heart of Paris where you can admire the prestigious monuments and landmarks of the city and the stunning architecture from bridge to bridge and bank to bank.

To learn history along the way, plug in your audio guide and choose your language. Come back at night for another tour, and it will be a different Paris before your eyes, yet just as magical.

Photo: alexandria / pixabay.com

Palace of Versailles



The town of Versailles is a wealthy Parisian suburb and municipality, located 20 kilometres outside the city. In the 11th century, Versailles was merely a country village enveloping a castle and the church of Saint-Julien. Today, it is mostly known for the lavish Château de Versailles, which served as home to King Louis XIV and the summer palace to Napoleon. It also saw the historic signing of the Treaty of Versailles in 1919 in the now-legendary Hall of Mirrors.

Photo: S-F/Shutterstock.com

Address: Place d'Armes, Versailles

Opening hours: Tue-Sun 9am-6:30pm, Mon closed

Phone: +33 1 30 83 78 00

Internet: www.chateauversailles.fr

Musée d'Orsay



Housed in a former railway station, the Musée d'Orsay holds a mesmerising collection of mainly French paintings, sculptures, and photography, including the world's largest collection of impressionist and post-impressionist paintings, with works from artists such as Van Gogh, Cézanne, Renoir, and Monet.

Photo: DXR / Wikimedia Commons(image cropped)

Address: Esplanade Valéry Giscard d'Estaing, Paris

Public Transport: RER: "Musée d'Orsay"

Opening hours: Tue-Sun 9:30am-6pm, Thu until 9:45pm, Mon closed

Phone: +33 1 40 49 48 14

Internet: www.musee-orsay.fr/en

Catacombs of Paris



Installed in the tunnels of former quarries, in the heart of Paris, the Catacombs are at once a fascinating and eerie attraction. Walk down the many steps to experience this spooky underground cemetery. Here you will find the osseous remains of more than 6 million people, moved to this location from an old cemetery.

Photo: Skreidzeleu/Shutterstock.com

Address: 1 Avenue du Colonel Henri Rol-Tanguy, Paris

Public Transport: Metro line 4, 6: "Denfert-Rochereau". RER B: "Denfert-Rochereau"

Opening hours: Tue-Sun 9:45am-8:30pm, Mon closed

Phone: +33 1 43 22 47 63

Internet: www.catacombes.paris.fr/en

More Info: Last admission at 7:30pm

Disneyland Paris



If you can be drawn away from the magical allure of the city, venture to a different type of magic at Disneyland Paris. The resort consists of two parks, Disneyland Park, which consists mainly of the usual rides, restaurants, cafés, and tons and tons of shops, and Walt Disney Studios, which has cinemas and stages on top of that.

Wander down Main Street USA, explore exotic sceneries in Adventureland, or visit your favourite and most beloved characters at Fantasyland. Tons of fun is waiting to be had by visitors of all ages.

Photo: Heather Cowper / Wikimedia Commons
Address: Boulevard de Parc, Coupvray, France
Opening hours: Mon-Fri 9:30am-10pm, Sat & Sun 9am-10pm
Phone: +33 1 60 30 60 53
Internet: www.disneylandparis.com/en-usd

Panthéon



Originally built as a church to house the reliquary of Saint Genevieve, this neoclassical building in the Latin Quarter, modelled after the Pantheon in Rome, is the final resting place of numerous writers, philosophers, poets and scientists, such as Rousseau, Voltaire, Victor Hugo, Émile Zola, and Marie Curie.

Photo: Nikitin Mikhail/Shutterstock.com
Address: Place du Panthéon, Paris
Public Transport: Metro line 10: "Cardinal Lemoine". RER: "Luxembourg"
Opening hours: Daily 10am-6:30pm
Phone: +33 1 44 32 18 00
Internet: www.paris-pantheon.fr/en

Place de la Concorde



Place de la Concorde is an expansive 84,000m² square located at the eastern end of the Champs-Élysées. It holds historical importance for several reasons: the liberation struggle during World War II brought many battles to Place de la Concorde; during the French Revolution, over a thousand people were beheaded here, many of them famous: Louis XVI, Marie Antoinette, and revolutionary Robespierre, just to name a few.

The site is dominated by the 24-metre Obélisque de Louxor, one of Cleopatra's needles - a gift from Egyptian viceroy Mohammed Ali to Louis Philippe.

Photo: Bill Poon/Shutterstock.com
Address: Place de la Concorde, Paris
Public Transport: Metro line 1, 8, 12: "Concorde"

Centre Pompidou



The Centre Georges Pompidou is a vast postmodern and high-tech architectural space that hosts the Musée National d'Art Moderne (the largest modern art museum in Europe) along with an expansive public library, and a centre for music and acoustic research. Its construction was controversial, as it was necessary to demolish the emblematic market that stood at that location at Les Halles, and it was initially despised by many Parisians for its unusual architectural aesthetic, which many thought clashed with the city's classical and sophisticated style.

Photo: Jorge Felix Costa/Shutterstock.com

Address: Place Georges-Pompidou, Paris
Public Transport: Station "Châtelet-Les Halles" (metro line 1, 4, 7, 11, 14, RER A, B, D). Station "Rambuteau" (metro line 11). Station "Hôtel de Ville" (metro line 1, 11).
Opening hours: Wed, Fri-Mon 11am-9pm, Thu until 11pm
Phone: +33 1 44 78 12 33
Internet: www.centrepompidou.fr/en
Email: contact@contact-centrepompidou.fr
More Info: Centre Pompidou will close for 5 years starting in 2025 for a massive renovation

Père Lachaise Cemetery



Père Lachaise is the largest cemetery in Paris and is reputed to be the most visited in the world. It is a huge and peaceful park and the final resting place of many Frenchmen and foreigners who have enriched French life over the past 200 years: Edith Piaf, Oscar Wilde, Camille Pissarro, Marcel Proust, Molière, Max Ernst, Maria Callas, and Jim Morrison, to name just a few.

Photo: [bensliman hassan/Shutterstock.com](https://www.shutterstock.com/author/bensliman-hassan)
Address: 16 Rue du Repos, Paris
Public Transport: Metro line 2: "Père Lachaise". Metro line 3: "Père Lachaise", "Gambetta".
Opening hours: Mon-Sat 8am-6pm, Sun 9am-6pm
Phone: +33 1 55 25 82 10

Champs-Élysées



This iconic promenade is nearly two kilometres long and goes all the way from Place de la Concorde to Place Charles de Gaulle, bookended by the Arc de Triomphe and the Musée du Louvre.

It is a lovely walk on any day of the year, and it is the place to be during times of celebration, be it the French National Day or New Year's Eve. In

July, the final stage of the Tour de France takes place right on this very street.

Photo: [S1001/Shutterstock.com](https://www.shutterstock.com/author/S1001)
Address: Avenue des Champs-Élysées, Paris
Public Transport: Station "Concorde" (metro line 1, 8, 12). Station "Charles de Gaulle - Étoile" (metro line 1, 2, 6, A). Station "Franklin D. Roosevelt" (metro line 1, 9).

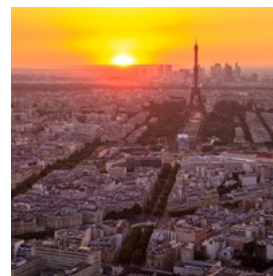
Pont Neuf



Pont Neuf (New Bridge) is, ironically, the oldest bridge over the river Seine in Paris. Its construction dates back to the 16th century, and the iconic bridge stands today at 278 metres (912 feet) long and 28 metres (92 feet) wide, connecting the Île de la Cité with either side of the Seine.

Photo: [Luciano Mortula/Shutterstock.com](https://www.shutterstock.com/author/Luciano-Mortula)
Address: Pont Neuf, Paris
Public Transport: Metro line 7: "Pont Neuf"

Montparnasse Tower



Montparnasse Tower, an iconic skyscraper in the Parisian skyline, offers breathtaking panoramic views of the City of Light. Standing at 210 metres (689 feet), it provides a unique perspective, as it is the only skyscraper within the city centre. The observation deck on the 56th floor provides uninterrupted vistas of famous landmarks, including the Eiffel Tower, the Louvre, and Notre-Dame. With its modern design and a swift elevator ride, Montparnasse Tower provides an alternative viewpoint for those seeking an awe-inspiring Parisian experience beyond the traditional cityscape.

Photo: Henrique Ferreira/Unsplash
Address: 33 Avenue du Maine, Paris
Internet: www.tourmontparnasse56.com/en

Le Marais



Le Marais is a historic district situated on the Right Bank of the Seine, spread across the 3rd and 4th arrondissements. It is a trendy district with beautiful architecture dating back to the 17th century. Now home to a vibrant LGBT community, Le Marais is famous for its many museums, art galleries, hip boutiques, lively nightlife, numerous kosher restaurants, and historic sites, such as Paris' oldest square, Place des Vosges, where you will find the Musée Victor Hugo, site of the writer's former residence.

Photo: Luciano Mortula/Shutterstock.com

La Seine



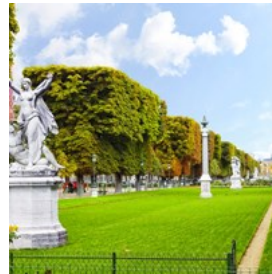
The river Seine flows 776 kilometres through northern France and offers a great opportunity to become familiar with many of Paris's impressive monuments while enjoying a boat ride through the heart of the city. A romantic cruise for couples or a fun-filled ride for the whole family, just sit back on the water and enjoy the scenic setting of Paris.

Most boat lines offer similar itineraries and are equipped with an audio announcement system, as the multilingual guides provide commentary on the passing sights in several different languages.

Photo: Marco Saracco/Shutterstock.com

Phone: +33 1 42 25 96 10
Internet: www.bateaux-mouches.fr/en/cruise
Email: info@bateaux-mouches.fr

Luxembourg Garden



Nestled in the heart of Paris, the Jardin du Luxembourg, colloquially known as the Garden of the French Senate (Jardin du Sénat), is a haven of tranquillity and charm. Originally commissioned by Marie de' Medici, the garden exudes elegance with its meticulously manicured lawns, vibrant flowerbeds, and regal statues. A central palace, the Luxembourg Palace, adds a touch of grandeur, while tree-lined promenades, ornate fountains, and the iconic Medici Fountain create an enchanting atmosphere.

This is one of the most interesting places in the city to people watch, where you will encounter frolicking families, strolling students, runners, rushing politicians, pickup chess matches, and lovers holding hands.

Photo: Brian Kinney/Shutterstock.com
Address: Boulevard Saint-Michel, Paris
Public Transport: RER: "Luxembourg", "Port Royal"
Opening hours: From 8am to 5pm in the winter and from 7:30am to 8pm in summer.
Tickets: Free entrance
Internet: jardin.senat.fr/en.html

Louis Vuitton Foundation



Apart from the undeniably breathtaking architecture, the Louis Vuitton Foundation contains a plethora of artwork by various artists from across the globe and hosts different events and workshops. A must-visit for everyone with

even the slightest interest in creative expression, in the form of art, architecture, or music.

Photo: Amy Johansson/Shutterstock.com

Address: 8 Avenue du Mahatma Gandhi, Paris

Opening hours: Mon 11am–8pm, Tue closed, Wed 11am–7pm,

Thu 11am–8pm, Fri 11am–9pm, Sat & Sun 10am–8pm

Phone: +33 1 40 69 96 00

Internet: www.fondationlouisvuitton.fr/en

Email: contact@fondationlouisvuitton.fr

Cheese and Wine Workshops



Immerse yourself in the quintessential French art of making cheese at Paroles de Fromagers.

Join a workshop that not only guides you through

the art of making cheese but also offers an exquisite cheese and wine tasting session. Learn the craft of cheese-making firsthand and discover the perfect wine pairings for each variety — an absolutely great experience for gourmets.

Photo: George Dolgikh/Shutterstock.com

Address: 41 Rue du Faubourg du Temple, Paris

Phone: +33 1 48 03 98 18

Internet: parolesdefromagers.com/en

Email: contact@parolesdefromagers.com

Parc Montsouris



Parc Montsouris is one of four large public parks built by Emperor Napoleon III at the cardinal points around the city. The large lake,

the cascade, and the extensive lawns make it a favourite among locals in any weather.

Photo: Rrainbow/Shutterstock.com

Address: 2 Rue Gazan, Paris

Public Transport: RER: "Cité Universitaire"

Opening hours: Daily 7am–7:30pm

Phone: +33 1 53 90 67 14

Internet: www.paris.fr/lieux/parc-montsouris-1810

DINING



lesya Kuznetsova/Shutterstock.com

Paris's cuisine surprises as much for its variety and range as it does for its quality and exquisite presentation. From small family-run bistros to Michelin-starred restaurants run by internationally famous chefs, dining here is more art than science.

Sweets, pastries, cheese, and fresh market produce are also an essential part of the Parisian gastronomic experience. Top it off with a treat from a speciality chocolaterie and a fine local vintage in the evening to complete the tour of the best delicacies Paris has to offer.

Hôtel du Nord



Hôtel du Nord is an upscale bistro, made famous in a 1930s movie by Marcel Carné, offering a varied menu, ranging from traditional French

cuisine to original dishes to be enjoyed in a lovely location by the canal St Martin.

Photo: sasaken/Shutterstock.com

Address: 102 Quai de Jemmapes, Paris

Public Transport: Metro line 3, 8, 9, 11: "République"

Opening hours: Mon-Sat 8am-2am, Sun 8am-1am
Phone: +33 1 40 40 78 78
Internet: www.hoteldunord.org/en

L'Avant Comptoir de la Terre



Since its audacious opening in 2009, Chef Yves Camdeborde's standing-room-only French pintxo bar, L'Avant Comptoir de la Terre, has garnered accolades for its mouth-watering dishes and natural wines. The subsequent additions of sibling wine bars, L'Avant Comptoir de la Mer and L'Avant Comptoir du Marché, have only heightened its popularity.

Known for its bustling atmosphere, jostling crowds, and jolly shouts from bartenders, L'Avant Comptoir de la Terre remains a culinary haven, treating patrons to the finest produce, including Corsican charcuterie and delectable Iberian ham croquettes, paired with a selection of top-notch wines.

Photo: Jeanette Teare/Shutterstock.com
Address: 3 Carrefour de l'Odéon, Paris
Opening hours: Daily noon-11pm
Phone: +33 1 44 27 07 50
Internet: camdeborde.com/en/restaurants/avant-comptoir-de-la-terre

Le Voltaire



Le Voltaire is, perhaps, amongst the best places in the 7th arrondissement to come for a quintessentially Parisian brasserie experience. Classic French cuisine with dishes polished to perfection, woven bent-wood chairs outside, and a chic ambience with that elusive je-ne-sais-quoi

factor.

Photo: Song_about_summer/Shutterstock.com
Address: 27 Quai Voltaire, Paris
Public Transport: Metro stop: Musée d'Orsay
Opening hours: Daily noon-5pm / 7:30pm-10:30pm
Phone: +33 1 42 61 17 49
Internet: www.restaurantlevoltaire.com

Le Potager de Charlotte



Created by two brothers passionate about health, the environment, and animal rights, Le Potager de Charlotte is an intimate spot offering plant-based, gourmet cuisine made from fresh, local, seasonal, and organic produce.

From the presentation to the flavours, you can really see the time and thought they have put into each dish. Le Potager de Charlotte is the kind of restaurant where you don't have to be vegan to fully enjoy the food, so make sure to pay a visit and book ahead.

Photo: Sebastian Coman Photography/Unsplash
Address: 12 Rue Louise-Émilie de la Tour d'Auvergne, Paris
Public Transport: Metro stop: Poissonnière
Phone: +33 1 44 65 09 63
Internet: www.lepotagerdecharlotte.fr/en
Email: contact@lepotagerdecharlotte.fr
More Info: 2nd location: 21 Rue Rennequin

Little Tokyo (Rue Sainte-Anne)



Although Japanese prevails in this aptly named Parisian neighbourhood tucked between the 1st and 2nd arrondissements, there is a plethora of Asian cuisines to choose from: restaurants serving everything from Korean

bibimbap to bowls of steamy Vietnamese pho pepper the area, enjoying popularity among both locals and visitors.

Photo: Thomas Marban/Unsplash

Address: Rue Sainte-Anne, Paris

More Info: Small street between the Louvre and the Opera, next to the Palais Royal.

Fajitas



Classic Mexican dishes such as quesadillas, nachos, and, of course, fajitas dished up in a vibrant Mexican-style setting just a few minutes

from the famous Pont Neuf.

Photo: Herson Rodriguez/Unsplash

Address: 15 Rue Dauphine, Paris

Public Transport: Metro stop: Saint-Michel Notre-Dame

Opening hours: Tue-Sat noon-11pm, Sun & Mon closed

Phone: +33 1 46 34 44 69

Internet: www.instagram.com/fajitas_paris

Epicure



Hailed as one of the best restaurants in Paris, Epicure offers a unique dining experience inside Le Bristol Paris Hotel. Michelin-starred chef

Eric Frechon concocts masterpiece French dishes using unusual combinations of exquisite ingredients, producing such meals as squid roasted with salted butter, puffed spelt, candied eggplant with couscous broth, and lobster coral vinaigrette.

Photo: Terje Sollie/Pexels

Address: 112 Rue du Faubourg Saint-Honoré, Paris

Public Transport: Metro line 9, 13: "Miromesnil"

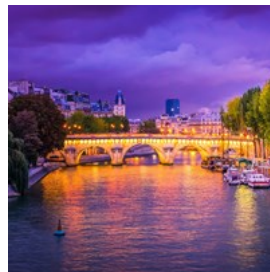
Opening hours: Tue-Sat 7:30am-10:30am / noon-1:30pm /

7:30pm-9:30pm; Sun & Mon closed

Phone: +33 1 53 43 43 40

Internet: www.oetkercollection.com/fr/hotels/le-bristol-paris/restaurants-et-bar/epicure/

Kong



The past few years have turned Kong into somewhat of a legend in Paris. Beneath its glass dome, you can savour some inventive Asian

fusion cuisine, grab a drink, and later on, dance the night away, all the while enjoying one of the most romantic views over the river Seine.

Photo: Neirfy/Shutterstock

Address: 1 Rue du Pont-Neuf, Paris

Public Transport: Metro line 7: "Pont Neuf"

Opening hours: Sun-Wed noon-midnight, Thu noon-1am, Fri & Sat noon-2am

Phone: +33 140 39 09 00

Internet: www.kong.fr/en

Email: contact@kong.fr

Terrasse de l'Alcazar



Alcazar is a contemporary brasserie located in St Germain-des-Près, where you can enjoy traditional English and French dishes prepared by

skilled chefs in a chic atmosphere filled with lots of greenery.

Photo: andreacastro / Shutterstock.com

Address: 62 Rue Mazarine, Paris

Public Transport: Metro line 4, 10: "Odéon"

Opening hours: Tue-Sat noon-3pm / 7pm-midnight; Sun & Mon closed

Phone: +33 153 10 19 99

Internet: alcazar.fr

Email: reservations@alcazar.fr

Pierre Gagnaire



Pierre Gagnaire is located near Champs-Élysées Avenue, inside Hôtel Balzac, and is one of the city's most solid and appealing restaurants,

ranked among the world's top 50. Expect to pay up for the lunch and dinner menu and make sure you make a reservation well in advance.

Photo: Luiz Rocha / Shutterstock.com

Address: 6 Rue Balzac, Paris

Public Transport: Metro line 1: "Georges V"

Opening hours: Mon-Fri noon-1:30pm / 7:30pm-9:30pm; Sat & Sun closed

Phone: +33 1 58 36 12 50

Internet: pierregagnaire.com

Allard



There are still local neighbourhood restaurants serving excellent food all over Paris. One of them is Allard, in the 6th

arrondissement, over on the left bank of the Seine. A traditional 1930s bistro offering elevated, traditional French dishes and wines in a cosy and inviting atmosphere.

Photo: Space_Cat/Shutterstock.com

Address: 41 Rue Saint-André des Arts, Paris

Public Transport: Metro line 4: "Saint-Michel", "Odéon"

Opening hours: Daily noon-2pm / 7pm-10pm

Phone: +33 1 43 26 48 23

Internet: www.restaurant-allard.fr

Le Balzar



Located in the lively Quartier Latin, close to la Sorbonne, Le Balzar is a classic Parisian brasserie, which has, since 1896, been serving traditional

French dishes in a gorgeous Art Nouveau interior or at terrace tables. Many of the city's famous authors have been regulars here.

Photo: artist11/Shutterstock.com

Address: 49 Rue des Écoles, Paris

Public Transport: Metro line 10: "Cluny-La Sorbonne"

Opening hours: Daily 8am-11:45pm

Phone: +33 1 43 54 13 67

Internet: www.brasseriebalzar.com

L'As du Fallafel



When in the mood for some Middle Eastern cuisine, head to Rue des Rosiers, in the 4th arrondissement. On and around this street, you

will find many establishments serving delicious Middle-Eastern and Yiddish/Eastern European specialities. Chez Hanna, King Falafel Palace, and Chez Marianne are just a few of them. L'As du Fallafel, in particular, is known for making the most famous falafel sandwich in Paris. It's a no-frills, little eatery serving besides falafels, shawarma and kebabs, to go or to stay, plus Israeli wines.

Photo: gkrphoto/Shutterstock.com

Address: 34 Rue des Rosiers, Paris

Public Transport: Metro line 1: "St. Paul"

Opening hours: Sun-Thu noon-11pm, Fri 11am-3pm, Sat closed

Phone: +33 1 48 87 63 60

Internet: www.instagram.com/lasdufallafel

Zo



Zo is a cosy restaurant that offers Japanese and Mediterranean cuisine. The restaurant has an exotic and welcoming décor and is very lively on the weekends. On the menu, you will find dishes ranging from sushi and pizza to steak and pasta.

Photo: funkyfrogstock / Shutterstock.com

Address: 13 Rue Montalivet, Paris

Public Transport: Metro line 10, 13: "Miromesnil". Metro line 1, 13: "Champs-Élysées-Clemenceau". Metro line 8, 12, 14: "Madeleine"

Opening hours: Mon-Fri noon-2:30pm / 7:30pm-11pm; Sat 7:30pm-11:30pm, Sun closed

Phone: +33 142 65 18 18

Internet: www.restaurantzo.com

Email: info@restaurantzo.com

Roomies Etienne Marcel



Hamburgers might not be the first thing that comes to mind when thinking about dining in Paris, but Roomies will make you rethink that. Here, you can customise your own burger with their homemade sauces and fresh ingredients. The friendly staff will gladly guide you through the process in good English. At just a 10-minute walk from Notre Dame, it is well worth a visit.

Photo: NatashaPhoto/Shutterstock.com

Address: 14 Rue du Cygne, Paris

Public Transport: Metro line 4: "Étienne Marcel"

Opening hours: Mon-Sat noon-2:30pm / 7:30pm-10:30pm; Sun noon-3pm

Phone: +33 1 42 60 30 11

Internet: roomiesburger.fr

Email: roomiesoffice@gmail.com

La Maison de Verlaine



Once home to French poet Paul Verlaine, La Maison de Verlaine is a small and charming family-owned restaurant offering a menu of French classics like escargots, duck breast, tarte tatin, and crème brûlée to be enjoyed in an old-fashioned atmosphere.

Photo: StockPhotosLV / Shutterstock.com

Address: 39 Rue Descartes, Paris

Public Transport: Metro line 10: "Cardinal Lemoine". Metro line 7: "Censier-Daubenton"

Opening hours: Mon & Tue, Thu & Fri 5pm-midnight, Sat & Sun noon-3pm / 6pm-midnight

Phone: +33 1 43 26 39 15

Rouge Bis



Situated in the bohemian Montmartre district, just a stone's throw from the Moulin Rouge, Rouge Bis is a popular brasserie offering a delightful glimpse into traditional French cuisine. The menu boasts classic French onion soup, succulent duck confit, rich beef bourguignon, ratatouille, and the famous escargots. The bustling atmosphere and top-notch service enhance the overall experience, making Rouge Bis a must-visit when in the area.

Photo: B and E Dudzinsky/Shutterstock.com

Address: 2 Rue de Bruxelles, Paris

Public Transport: Metro line 12: "Blanche"

Opening hours: Mon-Fri 8am-2am, Sat & Sun 8am-1am

Phone: +33 1 40 16 45 36

Internet: www.instagram.com/rougebisparis

Boutique yam'Tcha



A favourite among local foodies, yam'Tcha's head Chef Adeline Grattard creates dishes that mix French tradition with an Asian flair, resulting in combinations like scallops with peppers and black soya. In keeping with the mixed feeling of the place, for refreshments, you can choose from a variety of Asian teas or French wines.

Photo: Endla / Shutterstock.com

Address: 4 Rue Sauval, Paris

Public Transport: Metro line 1: "Louvre-Rivoli". Metro line 4: "Les Halles"

Opening hours: Tue-Sat noon-7pm

Phone: +33 1 40 26 06 06

Internet: www.yamtcha.com

Founti Agadir



Paris has many North African restaurants and one of the best is the Moroccan Founti Agadir. Located on the left bank, it has a fine selection of good-value couscous, tajines, and pastilla dishes.

Photo: hlphoto / Shutterstock.com

Address: 117 Rue Monge, Paris

Public Transport: Metro line 7: "Censier Daubenton"

Opening hours: Tue-Sat noon-2:30pm / 7pm-11pm; Sun noon-2:30pm, Mon closed

Phone: +33 1 43 37 85 10

Annapurna



This Indian restaurant has been serving the best of North Indian gastronomy ever since 1967. The décor is authentic and stylish. On the menu, you will find tasty dishes like lamb

curry, onion bhajis, and chicken tikka, as well as a few vegetarian and vegan choices.

Photo: Shebeko/Shutterstock.com

Address: 32 Rue de Berri, Paris

Public Transport: Metro line 9: "Saint-Philippe-du-Roule".

Metro line 1: "George V"

Opening hours: Mon-Fri noon-2pm / 7pm-10:45pm; Sat

7pm-10:45pm, Sun closed

Phone: +33 1 45 63 91 62

Internet: www.instagram.com/annapurnaparis

Email: contact@annapurna.paris

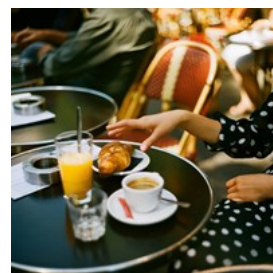
CAFÉS



Ekaterina Pokrovsky/Shutterstock.com

Fresh baguettes and croissants with a strong espresso in the morning, aromatic teas or pastis in the afternoon, and a local vintage with friends in the evening, there's never a wrong time to visit a café in Paris. They are a quintessential part of the Parisian experience and the perfect vantage point from which to engage in a lazy afternoon of people-watching. The wide variety of drinks and the occasional live music round off the café experience to perfection.

Café de Flore



This famous literary café in Saint-Germain-des-Prés boasts some very illustrious names among its former clientele, including Simone de Beauvoir, Albert Camus, and Jean-Paul Sartre.

Getting a table among all the tourists might be a challenge, but with the Café de Flore's history and status in popular culture, it definitely deserves a visit.

Photo: Daria Shevtsova/Pexels

Address: 172 Boulevard Saint-Germain, Paris

Public Transport: Metro line 4: "Métro Saint Germain des Près"

Opening hours: Daily 7:30am-1:30am

Phone: +33 1 45 48 55 26

Internet: cafedeflore.fr/en

Ladurée



La Maison Ladurée is an iconic, upscale bakery and tea room specialising in French macarons. At this location in the heart of

Saint-Germain-des-Près, you can indulge in scrumptious French pastries and true culinary masterpieces fit for royals. Be sure to take some of these decadent desserts back home as they do make a nice gift.

Photo: Melanie Kreutz/Unsplash

Address: 21 Rue Bonaparte, Paris

Public Transport: Metro stop: Saint-Germain-des-Près

Opening hours: Daily 8:30am-7pm

Phone: +33 1 44 07 64 87

Internet: www.laduree.fr/en

Email: contact@laduree.com

More Info: 2nd location: 75 Avenue des Champs-Élysées, Paris

KB CaféShop



A speciality coffee pioneer in Paris, KB offers its own roasted coffee from worldwide sources, which is served on a pavement terrace.

Everything you eat here is freshly handmade by

the team in-house. The helpful staff serves baguettes, sandwiches and desserts like freshly made muffins, cakes and tartes. This is also a great place to visit for breakfast.

Photo: Nathan Dumlao/Unsplash

Address: 53 Avenue Trudaine, paris

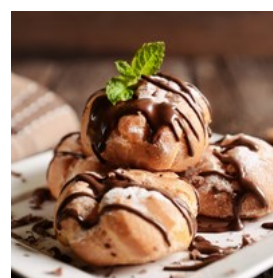
Opening hours: Mon-Fri 7:45am-6:30pm, Sat & Sun

9am-6:30pm

Phone: +33 1 56 92 12 41

Internet: kbcoffeeroasters.com

Le Bistrot du Peintre



Le Bistrot du Peintre, an authentic Art Nouveau bistro in the Bastille district, has been serving traditional French dishes for over a century.

Established in 1902, the bistro underwent a thorough renovation in 2012 while preserving its Art Nouveau charm, earning it recognition as a historic monument. It features a changing menu with daily specials, showcasing the finest wines from both renowned and small producers.

Photo: Piotr Krzeslak/Shutterstock.com

Address: 116 Avenue Ledru Rollin, Paris

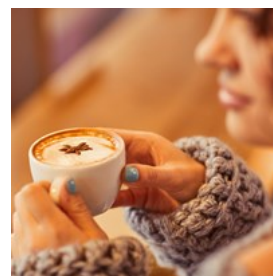
Opening hours: Mon-Fri 7am-2am, Sat & Sun 8am-2am

Phone: +33 1 47 00 34 39

Internet: bistrotdupeintre.com/en

Email: bistrotdupeintre@gmail.com

Le Select



Another famous literary café (and former hangout of Ernest Hemingway, Pablo Picasso, and Henry Miller), Le Select remains true to the spirit it has

had since 1925, despite its popularity among tourists and the high prices to match. It is still a favourite among locals and always displays an

authentic Parisian charm.

Photo: IAKOBCHUK VIACHESLAV / Shutterstock.com
Address: 99 Boulevard du Montparnasse, Paris
Public Transport: Metro line 4: "Vavin"
Opening hours: Sun-Thu 7am-2am, Fri & Sat 7am-3am
Phone: +33 1 45 48 38 24
Internet: www.leselectmontparnasse.fr/en

Charbon Café



Quiet and laid-back by day and a trendy centre for nightlife after dark, Rue Oberkampf hosts several cafés that like Charbon Café transform

into chic bars at night. Originally a dance hall built around 1900, this spacious café attracts a hip urban crowd.

Photo: iravgustin / Shutterstock.com
Address: 109 Rue Oberkampf, Paris
Public Transport: Metro line 3: "Parmentier"
Opening hours: Daily 8am-2am
Phone: +33 1 43 57 55 13
Internet: www.lecafecharbon.fr
Email: cafecharbonparis@gmail.com

Café de la Paix



For a taste of sophistication, check out the opulent Café de la Paix, located next to and designed by the same architect as the Opera

Garnier. As part of Le Grand Hotel, you can enjoy the luxurious interiors or relax on the terrace to indulge in some people-watching while savouring some French dishes.

Photo: Monkey Business Images/Shutterstock.com
Address: 5 Place de l'Opéra, Paris
Public Transport: Metro line 3, 7, 8: "Opéra"
Opening hours: Daily 8am-10:45pm
Phone: +33 1 40 07 36 36

Internet: www.cafedelapaix.fr/en
Email: reservation@cafedelapaix.fr

Strada Café



Located near the Notre Dame Cathedral, Strada Café is a popular spot known for its breakfast and specialty coffee. The café provides a delightful

setting for a leisurely stop during a stroll through the Latin Quarter. Beyond fantastic coffee, the café serves healthy lunch options, fresh juices, and baked goods.

Photo: Fahmi Fakhruudin/Unsplash
Address: 24 Rue Monge, Paris
Opening hours: Mon-Wed 8am-6:30pm, Thu 8am-2pm, Fri 8am-6:30pmm, Sat & Sun 9am-6pm
Internet: stradacafe.fr
Email: contact@stradacafe.fr

Breizh Café



One of the finest creperies in the French capital is, actually, a Japanese import: Breizh Café was a big hit in the land of the rising sun long

before it came to the Marais. The chain's very successful outpost serves scrumptious crêpes and galettes made with the finest organic ingredients from Brittany. Michelin-starred Raphaël-Fumio Kudaka is the chef behind the enterprise.

Photo: Valerii_Dex/Shutterstock.com
Address: 109 Rue Vieille du Temple, Paris
Opening hours: Daily 9am-11pm
Phone: +33 1 42 72 13 77
Internet: en.breizhcafe.com
Email: contact@breizhcafe.fr

BARS & NIGHTLIFE



IM_photo/Shutterstock.com

Paris transforms into a captivating playground after dark, offering a nightlife that mirrors its vibrant cultural tapestry. From chic rooftop bars with panoramic views of the glittering Eiffel Tower to hidden speakeasies tucked away in the trendy Marais district, the options are as diverse as the city itself.

Dive into the rhythmic pulse of renowned clubs like Rex Club, pulsating with electronic beats, or opt for the intimate charm of jazz bars along the Seine. For a unique dose of vibrant local entertainment, you can't beat Paris's famous cabaret venues.

Le 10 Bar



Le 10 Bar is a quaint little bar, near the Palais du Luxembourg, popular for its homemade sangria.

Take a seat at one of its street-facing tables or

grab a chair in its rustic and characterful interior, decorated with old posters.

Photo: Ralph (Ravi) Kayden/Unsplash

Address: 10 Rue de l'Odéon, Paris

Public Transport: Metro stop: Odéon

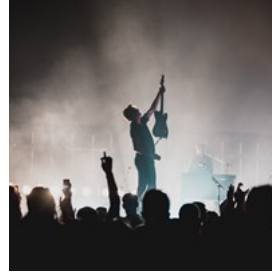
Opening hours: Mon-Thu 5pm-1am, Fri & Sat 5pm-2am, Sun 5pm-midnight

Phone: +33 9 82 43 55 77

Internet: le10bar.com

More Info: Happy Hour between 5pm-8pm

Supersonic



Supersonic is an intimate concert hall and bar, situated in a former New York loft-like factory hosting free rock concerts by

up-and-coming bands.

Photo: Spencer Davis/Unsplash

Address: 9 Rue Biscornet, Paris

Opening hours: Sun-Thu 7pm-midnight, Fri & Sat 7pm-6am

Phone: +33 1 49 23 41 90

Internet: www.instagram.com/supersonicclub

Email: contact@supersonic-club.fr

Aux Folies



Aux Folies is a traditional Paris bar & café that has fully embraced the city's multi-cultural present. Once the home of Edith Piaf and Maurice

Chevalier, the district of Belleville now mixes Chinese and North African influences, reflecting the effect immigrant cultures have had on the city and its culture. Aux Folies is a popular spot for both coffee and cocktails, and its spacious terrace allows for some people-watching.

Photo: Gorodisskij/Shutterstock.com

Address: 8 Rue de Belleville, Paris

Public Transport: Metro line 2, 11: "Belleville"

Opening hours: Daily 7am-2am

Phone: +33 6 28 55 89 40

Internet: www.instagram.com/auxfoliesbelleville

Favela Chic



Favela Chic is an eclectic and lively Brazilian bar & restaurant offering a mix of French and Brazilian fare, plus cocktails, and lots of music until the early hours of the morning.

Photo: IAKOBCHUK VIACHESLAV/Shutterstock.com

Address: 18 Rue du Faubourg du Temple, Paris

Public Transport: Metro line 3, 5, 8, 9, 11: "République"

Opening hours: Wed & Thu 7:30pm-2am, Fri & Sat 7:30pm-5am

Phone: +33 140 21 38 14

Internet: www.favelachic.com

Email: presseprod@favelachic.com

Rex Club



Rex Club holds a prominent status in Paris's nightlife scene. Renowned for its iconic presence in the electronic music realm, Rex Club

has been a consistent hub for dance music enthusiasts since its inception. With a rich history dating back to the '90s, this legendary venue has hosted internationally acclaimed DJs and continues to be a symbol of Parisian club culture. Its lively atmosphere, cutting-edge sound system, and commitment to electronic music make Rex Club an enduring icon in the vibrant nightlife landscape of Paris.

Photo: Daxiao Productions / Shutterstock.com

Address: 5 Boulevard Poissonnière, Paris

Public Transport: Metro line 8, 9: "Bonne Nouvelle"

Opening hours: Wed-Sat 11:55pm-7am, Sun-Tue closed

Phone: +33 1 42 36 10 96

Internet: www.rexclub.com

Email: infos@rexclub.com

La Perle



La Perle is a favourite among 'bohemian chic' Parisians as well as international stylists, artists, models, and fashionistas. It is a

perfect place to either start your evening or just have a conversation over a glass of wine and some pizza. Though it is often crowded, it has a homey and friendly atmosphere.

Photo: Africa Studio/Shutterstock.com

Address: 78 Rue Vieille du Temple, Paris

Opening hours: Mon-Fri 7:30am-2am, Sat & Sun 8am-2am

Phone: +33 1 42 72 69 93

Internet: cafelaperle.com

Buddha-Bar



Nestled in the heart of the 8th arrondissement near Place de la Concorde, Buddha-Bar is a glitzy temple of style, renowned for its

Asian-fusion cuisine and iconic ambience. The vast two-storey restaurant showcases dramatic cinema-style décor, adorned with rich mahogany furniture, Chinese and Japanese art, and a towering four-metre-tall Buddha statue. Palm trees and chandeliers create a unique dining setting, while the mezzanine bar, shaped like an ornate sleeping dragon, invites patrons to savour drinks amid 18th-century-style wrought-iron balustrades. This global phenomenon, born in Paris, offers a nightlife experience like no other. Top DJs spin ethnic and laid-back tunes, setting the mood for a vibrant evening.

Photo: Nykonchuk Oleksii / Shutterstock.com

Address: 8-12 Rue Boissy d'Anglas, Paris

Public Transport: Metro line 1, 8, 12: "Concorde"

Opening hours: Mon-Sat 6pm-2am, Sun 11:30am-4pm /

6pm-2am

Phone: +33 1 53 05 90 00

Internet: www.buddhabar.com

Email: buddhabar@buddhabar.com

Nouveau Casino



Nouveau Casino, a renowned Parisian venue, is celebrated for its vibrant nightlife that extends into the early morning. This legendary establishment features a lively bar on the lower floor and a medium-sized dance hall upstairs. Its true distinction lies in being a prime location for small concerts, showcasing a penchant for underground music.

Photo: [glazok90 / Shutterstock.com](#)

Address: 109 Rue Oberkampf, Paris

Public Transport: Metro line 3: "Parmentier"

Phone: +33 1 43 57 57 40

Internet: www.instagram.com/nouveaucasino

Email: contact@nouveaucasino.fr

Point Éphémère



Point Éphémère is a dynamic cultural centre that puts together a rich program of exhibitions, concerts, and performances in a large riverside space that also includes a bar and restaurant.

Photo: [Laurent GUEDON/CC BY-SA 2.0/Wikimedia\(image cropped\)](#)

Address: 200 Quai de Valmy, Paris

Public Transport: Metro line 2, 5, 7bis: "Jaurès"

Phone: +33 9 50 63 40 07

Internet: pointephemere.org

Email: info@pointephemere.org

Le Truskel



Nestled between Bourse and Palais Garnier in Paris's 2nd arrondissement, Le Truskel combines the friendly ambience of an

English pub with the lively atmosphere of a micro club. The venue's early evening live concerts attract music enthusiasts, while sports fans gather to catch major matches. As the night progresses, Le Truskel transforms itself with DJs delivering a varied mix of new indie pop and timeless classics from the realms of rock, punk, and electro-pop.

Photo: [Africa Studio / Shutterstock.com](#)

Address: 12 Rue Feydeau, Paris

Public Transport: Metro line 3: "Bourse". Metro line 8, 9: "Grands Boulevards"

Opening hours: Tue & Wed 7pm-4am, Thu-Sat 7pm-5am, Sun & Mon closed

Phone: +33 1 40 26 57 42

Internet: www.truskel.fr

Galway Irish Pub



In Paris, much like any other city, you'll find the quintessential Irish Pub. This one has all the offerings you usually expect from an Irish pub:

a range of draft beers, sports screenings, live music, some tasty pub grub, and of course, great 'craic'!

Photo: [Brent Hofacker / Shutterstock.com](#)

Address: 13 Quai des Grands Augustins, Paris

Public Transport: Metro line 4, RER C: "Saint-Michel"

Opening hours: Sun-Thu noon-2am, Fri & Sat noon-5am

Phone: +33 1 43 29 64 50

Internet: galwayirishpub.fr

Email: galway.paris@gmail.com

SHOPPING



Vladislav Gurfinkel/Shutterstock.com

Shopping in Paris is synonymous with famous designers and luxurious brands – the names Louis Vuitton, Chanel, and Christian Dior immediately come to mind. But you will also find more affordable options to match your budget in the huge department stores or many popular neighbourhood markets.

Le Bon Marché



Founded in 1838, Le Bon Marché was the first-ever department store.

Tradition and prestige accompany this prominent retail

establishment, the top destination for fashion and style. Designer apparel for men and women, cosmetics, accessories, jewellery, and houseware comprise the major departments. There is also an impressive food hall, which is definitely worth a visit.

Photo: milanzeremski/Shutterstock.com

Address: 24 Rue de Sèvres, Paris

Public Transport: Metro line 10, 12: "Sèvres Babylone"

Opening hours: Daily 10am–7:45pm

Phone: +33 1 44 39 80 00

Internet: www.lebonmarche.com

Galleries Lafayette



The Galleries Lafayette is an upscale French department store chain with more than 50 locations in France as well as in Berlin, Dubai, and Jakarta. Its flagship store on Boulevard Haussmann, famous for its opulent interior along with its magnificent steel-frame art nouveau glass dome, houses more than 3500 of the most prestigious designer and cosmetics labels, as well as the largest European space entirely devoted to men's fashion. Plus, a contemporary art gallery, a variety of cafés and eateries, and a rooftop terrace offering a breathtaking view of Paris.

Photo: Vladislav Gurfinkel/Shutterstock.com

Address: 40 Boulevard Haussmann, Paris

Public Transport: Metro line 7, 9: "Chaussée d'Antin-La Fayette"

Opening hours: Mon–Sat 10am–8pm, Sun 11am–8pm

Phone: +33 1 42 82 34 56

Internet: haussmann.gallerieslafayette.com

Shakespeare & Company



It might be difficult to let the magic of Shakespeare & Company truly sink in given the abominable number of tourists crowding the tiny space these days, but the place is still definitely worth a visit.

'Be Not Inhospitable to Strangers Lest They Be Angels in Disguise', seen above the reading room entrance are words the shop lives by, along with its founding motto: 'Give what you can; take what you need'. Throughout its 70-year existence, the shop has accommodated young

writers and artists in exchange for helping out, and an estimated 30,000 people have reportedly slept on the beds tucked between its bookshelves since its opening in 1951, but one doesn't have to spend the night to enjoy the welcoming public reading room. In 2016, the shop published its own history with contributions from the likes of Allen Ginsberg, Jim Morrison, and Ethan Hawke.

Photo: Pantheon/CC BY 2.0/Wikimedia(image cropped)
Address: 37 Rue de la Bûcherie, Paris
Phone: +33 1 43 25 40 93
Internet: www.shakespeareandcompany.com
Email: info@shakespeareandcompany.com

Along the Seine – The Bouquinistes of Paris



One of the most enchanting shopping experiences in Paris involves strolling along the Seine River's parapet, where the Bouquinistes of Paris set up their stalls. These booksellers rent out old stalls to offer a diverse array of items, including used books, posters, antiques, and souvenirs. The picturesque rows of bookstalls along the Seine create a unique and nostalgic ambiance, making it a delightful destination for book lovers and those seeking vintage treasures in the heart of the city.

Photo: Ekaterina Pokrovsky/Shutterstock.com

Carrousel du Louvre



Located beneath the iconic Louvre Museum, the Carrousel du Louvre offers a unique and sophisticated shopping experience. The shopping gallery is known for its diverse range of boutiques and shops, showcasing a blend of

high-end French and international brands. Visitors can explore elegant stores featuring fashion, jewellery, beauty products, and more.

Photo: Valikdjan/Shutterstock.com
Address: 99 Rue de Rivoli, Paris
Public Transport: Metro line 1, 7: "Palais Royal-Musée du Louvre"
Opening hours: Sun-Thu 10am-7pm, Fri 10am-8pm
Phone: +33 143 16 47 10
Internet: www.westfield.com/france/carrouseloulouvre

Champs-Élysées



Champs-Élysées is a charming and historic thoroughfare, famous worldwide for its upscale shopping options. The long avenue is lined with a mix of high-end and flagship stores of renowned international and French brands. Some examples of notable shops on or near Champs-Élysées include Cartier, Dior, Guerlain, and Louis Vuitton, together with a few malls such as Galeries Lafayette Champs-Élysées, Galerie des Champs, and Galerie des Arcades. Here you will also find an Apple store, a large Sephora for beauty enthusiasts and Zara, for more accessible and contemporary fashion.

While Champs-Élysées is known for its luxury brands, you can also find a mix of other shops, cafés, and theatres along the avenue, making it a diverse and iconic shopping destination in Paris.

Photo: Ekaterina Pokrovsky/Shutterstock.com

Westfield Forum des Halles & Le Marais



Located in the heart of Paris between the Louvre and Notre Dame, Westfield Forum des Halles is a vast shopping centre set on the former

site of the historic Les Halles market, demolished in 1971. It is a bustling underground complex offering a diverse range of shopping experiences, including trendy shops, international brands, and independent boutiques. Beyond shopping, visitors can enjoy cinema screenings, dine at various restaurants and bars, and explore nearby streets like Rue Montorgueil and Rue Quincampoix for additional shopping and dining options.

Once the city's Jewish quarter, Le Marais, in the 4th arrondissement, is now a hip area filled with trendy boutiques, art galleries, designer stores, vintage shops, and gay bars, making it a popular shopping destination in Paris with a unique and eclectic atmosphere.

Place des Vosges is home to elegant arcades and the Musée Victor Hugo, where the renowned writer lived. Along the neighbourhood's charming cobblestone streets, you will also find a variety of cafés, restaurants, and cultural attractions, creating a well-rounded experience for those exploring the area.

Photo: BERK OZDEMIR/Shutterstock

Address: 101 Porte Berger, Paris

Public Transport: Metro line 4: "Les Halles". RER A, B, D: "Châtelet-Les Halles"

Opening hours: Mon-Sat 10am-8:30pm, Sun 11am-7:30pm

Phone: +33 1 44 76 87 08

Internet: www.westfield.com/france/forumdeshalles

Les Grands Boulevards



This is one of the city's most popular shopping areas, home to prestigious department stores such as Printemps and Galeries Lafayette.

They are remarkable as much for the wide range of items sold as for their Art Nouveau architecture. You will find a world of ready-to-wear, with appealing boutiques and affordable brands. A good place to start is with a walk from the beautiful Opéra Palais Garnier down to the stores on Boulevard Hausmann.

Photo: Kamil Macniak/Shutterstock.com

Area Surrounding Place Vendôme



Right off Rivoli is the beautiful Place Vendôme, where jet-setters and millionaires buy their jewellery. This is THE area for renowned Haute

Couture and luxury goods. From here, you can enjoy a walk down to Rue du Faubourg Saint-Honoré and Avenue Montaigne, where the superb boutiques display their goods out of baroque windows.

Photo: Hugh Millward/CC BY 2.0/Flickr(image cropped)

Épicerie Causes



Épicerie Causes is a renowned grocery shop celebrated for its curated selection of high-quality, artisanal products. From exquisite cheeses and fine

wines to gourmet condiments and fresh produce, Épicerie Causes is a haven for food enthusiasts. The shop's commitment to sourcing from local

producers and its emphasis on quality make it a go-to destination for those looking to experience the best of French culinary delights. It is also affiliated with Esprit Cuisine, where you can learn how to cook delicious meals with the ingredients you have just bought.

Photo: Iakov Filimonov/Shutterstock.com

Address: 55 Rue Notre Dame de Lorette, Paris

Public Transport: Metro line 2: "Pigalle". Metro line 12: "Pigalle", "Saint-Georges"

Opening hours: Mon-Sat 10am-9pm, Sun 10am-1pm

Phone: +33 1 53 16 10 10

Internet: www.causses.org

Email: contact@causses.org

More Info: 2nd location: 222 Rue Saint-Martin, Paris

Souffle Continu



Souffle Continu is an independent record store, near the legendary Père-Lachaise Cemetery, stocking up on new releases as well as a vast and eclectic collection of re-releases on vinyl, DVDs, and CDs.

Photo: Ferenc Cegledi/Shutterstock.com

Address: 22 Rue Gerbier, Paris

Public Transport: Metro line 2: "Philippe Auguste"

Opening hours: Mon-Fri 11am-7pm, Sat 11am-8pm, Sun closed

Phone: +33 1 40 24 17 21

Internet: www.soufflecontinu.com

Marché aux Puces de Clignancourt



Marché aux Puces de Clignancourt, located in the northern part of Paris, is one of the largest and most famous flea markets in the world.

Commonly known as the Paris Saint-Ouen Flea Market, it spans a vast area and offers a treasure

trove of antiques, vintage items, and unique collectables. With numerous stalls and shops, the market attracts as many as 200,000 visitors every weekend seeking one-of-a-kind finds, ranging from furniture and clothing to art and jewellery.

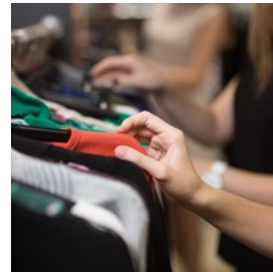
Photo: AnastasiaNess / Shutterstock.com

Address: Porte de Clignancourt, Paris

Public Transport: Metro line 4: "Porte de Clignancourt", "Simplon"

Opening hours: Operating hours vary. Generally Sat & Sun 10am-6pm, Mon 11am-5pm

La Vallée Village



La Vallée Village is an elegant outdoor shopping centre, located 35 minutes east of Paris and just five minutes from the Disney parks. Discover superb price reductions on a selection of the leading French and international luxury fashion and lifestyle brands in over 100 outlet boutiques.

Photo: fizkes / Shutterstock.com

Address: 3 Cours de La Garonne, Serris

Opening hours: Daily 10am-8pm

Phone: +33 1 60 42 35 00

Internet:

www.thebicestercollection.com/la-vallee-village/en/visit

Email: lavallee-village@valueretail.com

Artazart



Combining Paris's love of books with its passion for design, Artazart is a palace of coffee-table tomes, with everything from fashion and photography to illustrations and children's books. The small art gallery section also showcases works by local talents.

Photo: luminaimages / shutterstock.com

Address: 83 Quai de Valmy, Paris

Public Transport: Metro line 5: "Jacques Bonsergent"

Opening hours: Daily 10:30am-7:30pm

Phone: +33 1 40 40 24 00

Internet: artazart.com/en

Email: info@artazart.com

Goldymama



Paris is a goldmine for vintage clothing, but if you can only hit one spot, make it Goldymama. This small boutique is packed with well-preserved items

from yesteryear, making it the perfect place to shop for 1950s skirts and suits, or indeed, the wacky 1970s shirts you have always wanted. If you are looking for truly unique gifts, look no further.

Photo: ChiccoDodiFC/Shutterstock.com

Address: 99 Rue Orfila, Paris

Public Transport: Metro line 3bis: "Pelleport"

Opening hours: Tue-Sat 11am-7:30pm, Sun & Mon closed

Phone: +33 1 40 30 08 00

Internet: www.instagram.com/goldymamavintage

La Maison du Chocolat



Indulge in the exquisite world of chocolate at La Maison du Chocolat, a renowned chocolatier selling rich and delicious treats. Each piece is

meticulously coated, decorated, selected, and boxed by hand, using only the finest cocoas sourced from around the globe. From delicate macarons and fancy candies to mouth-watering éclairs and other pastries, the offerings are a testament to the artistry of chocolate craftsmanship.

Photo: stockcreations/Shutterstock

Address: 225 Rue du Faubourg Saint-Honoré, Paris

Opening hours: Mon-Sat 10am-7pm, Sun closed

Phone: +33 1 42 27 39 44

Internet: www.lamaisonduchocolat.com/fr_fr

Album Comics



The king of comics in Paris, Album Comics carries everything from American DC and Marvel comics to popular Japanese manga to the much-beloved French BD, plus all sorts of geek-chic merchandise. Book signings are also held here, and it is not uncommon to find collectables and limited-edition items.

Photo: Miika Laaksonen/Unsplash

Address: 67 Boulevard Saint-Germain, Paris

Public Transport: Metro line 10: "Cluny-La Sorbonne"

Opening hours: Mon-Sat 10am-8pm, Sun 11am-7pm

Phone: +33 1 53 10 00 60

Internet: www.albumcomics.com/en

L'ABC du Parfum



L'ABC du Parfum is exactly what it sounds like. Here, you can learn about the basics of fragrances, participate in a workshop, and go on a perfume tour. You can even take home a perfume of your own creation.

Photo: www.BillionPhotos.com/Shutterstock.com

Address: 7 Rue Vineuse, Paris

Public Transport: Metro line 6: "Passy"

Opening hours: Mon-Fri 2pm-4pm, Sat 3:30pm-5pm, Sun closed

Phone: +33 6 43 64 16 55

Internet: abcduparfum.fr

Email: marina.jung@abcduparfum.fr

TOURIST INFORMATION



Ditty_about_summer/Shutterstock.com

Passport/Visa



France can be visited visa-free for up to 90 days by citizens of Australia, New Zealand, Japan, South Korea, Taiwan, Malaysia, Israel, UAE and most countries in America. If you are unsure whether or not you need to apply for a visa, we recommend contacting the embassy or consulate in your country. International (non-Schengen) travellers need a passport that is valid for at least 3 months after the end of their intended trip in order to enter the Schengen zone. Citizens of Schengen countries can travel without a passport but must have a valid ID with them during their stay.

Photo: ConvertKit/Unsplash

Paris Charles de Gaulle Airport



Paris is served by two major airports. Most international flights arrive at Paris Charles de Gaulle Airport (CDG), also known as Roissy Airport, 30 kilometres from the city centre. Orly

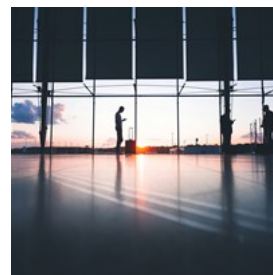
(ORY) is 18 kilometres from the city centre. A third airport, Paris-Beauvais (BVA), is mainly served by low-cost airlines.

One of the cheapest and fastest transfer options (approximately 45 minutes) is the underground RER B to Gare du Nord running every 10-15 minutes, from where you can connect to Paris's metro network. Alternatively, the RoissyBus shuttle provides a direct link between Paris-Opéra and Paris-Charles de Gaulle airport in 60 minutes. The frequency ensures a departure every 30 minutes.

It's crucial to be cautious at airports to avoid fake cabs; authentic taxis are identifiable by an illuminated sign. To locate legitimate taxi stands, it's advised to follow the designated markings on the ground.

Photo: Wilfredor/CC BY-SA 3.0/Wikimedia(image cropped)
Address: Paris Charles de Gaulle Airport
Internet: www.parisaeroport.fr/roissy-charles-de-gaulle

Paris-Orly Airport



Paris Orly Airport (ORY) is located approximately 20 km away from Paris city centre. There are basically three transportation options to reach Paris: taxi, train, and bus.

Opting for a taxi offers the most convenient and direct transfer, taking approximately 20 to 30 minutes, with taxi ranks readily available outside all airport terminals.

Unfortunately, there are no direct train lines from Orly Airport to the city centre. Travellers opting for the train option need to take the Orlyval metro to Antony Train Station and then

transfer to the RER B line, with the entire journey taking around an hour. Trains leave from all terminals, simply exit the arrivals gate and follow the signs leading to the Orlyval metro platform.

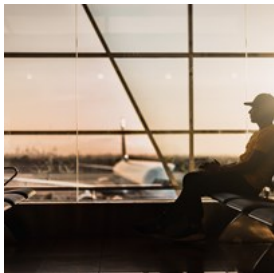
The Orlybus, a direct shuttle service, is a swift and direct bus option taking 30 minutes to reach Place Denfert-Rochereau in the city centre. While public buses are available, they make frequent stops and take longer than the Orlybus. Bus stops are conveniently located outside all airport terminals.

Photo: Artur Tumasjan/Unsplash

Address: Paris Orly Airport

Internet: www.parisaeroport.fr/en/orly-airport

Paris Beauvais Airport



Paris Beauvais (BVA) is mainly served by low-cost airlines. A shuttle service is organised between the terminals and Paris-Porte Maillot, which is located close to RER (line C) and metro (line 1) stations. The shuttle journey takes about 1 hour and 15 minutes, and it is designed to align with flight timetables.

Photo: Marco López/Unsplash

Address: Paris Beauvais Airport

Phone: +33 8 92 68 20 66

Internet: www.aeroportparisbeauvais.com/en/passengers

Public Transport



Paris offers an ideal setting for exploring on foot, yet public transport remains a practical necessity during your visit. The iconic Paris

metro, characterised by its Art Nouveau entrances, stands out as a fast and economical means of navigating the city. With currently 16 lines and over 300 stations, the metro operates daily from 5:30am to midnight on weekdays and until approximately 1:45am on weekends.

Tickets for the metro and other public transportation options, including buses and trams, can be conveniently acquired from machines in mainline or metro stations. The Navigo Easy pass, designed for occasional use, comes pre-loaded with 10 transport journeys in central Paris and can be easily recharged at stations. For unlimited travel spanning 1, 2, 3, or 5 days in Paris and Île-de-France, the Paris Visite pass is a convenient choice.

Beyond the metro, Paris boasts an extensive transportation network, including 5 RER lines serving both the city and its surroundings, 13 tram lines covering the outskirts and parts of Île-de-France, and a comprehensive bus system. Buses operate Monday through Saturday from approximately 7am to 12:30am, with nearly half of the lines running on Sundays and public holidays. Additionally, the Noctilien night bus service ensures travel between 12:30am and 5:30am. Finally, Transiliens, regional trains departing from major Parisian stations, offer further connectivity to the surrounding areas.

For more information, visit the RATP website.

Photo: Nikonaft/Shutterstock

Internet: www.ratp.fr/en

Batobus



Batobus is a boat service through the heart of Paris, with 9 stops at key locations along the river Seine. Serving as a hop-on-hop-off service, it

provides the freedom for travelers to craft their own itinerary, allowing exploration of Paris's historical monuments and neighbourhoods at their own pace.

Photo: J Shim/Unsplash

Internet: www.batobus.com/en

Taxi



Taxis can be hailed at stands or on the street, but they can be hard to find, especially on Friday and Saturday evenings.

However, Uber, the widely-used ride-sharing service, operates in the city, providing a convenient alternative for both locals and tourists to navigate Paris seamlessly.

When it comes to taxis in Paris, it's crucial to be cautious at airports, especially, in order to avoid fake cabs; authentic taxis are identifiable by an illuminated sign. To locate legitimate taxi stands, it's advised to follow the designated markings on the ground.

Photo: Diego Fernandez/Unsplash (cropped)

Frequently Asked Questions About Paris (FAQs)



- What is the best time to visit Paris? As one of the most visited cities in the world, it is safe to say that there is never really a bad time to visit the

French capital. The weather is best in summer, but crowds are by far the biggest. Autumn is also highly recommended for its pleasant weather, smaller crowds, and stunning foliage. Having said that, the best time to visit Paris is from June to October.

- How many days do you need in Paris?

In order for you to visit the main sights and attractions in Paris, walk around the city and explore its characterful arrondissements, you will need from 4 to 5 days.

- Is Paris dangerous?

Despite being a major European capital and one of the most visited cities in the world, Paris is a fairly safe city for travellers. However, as with most main tourist destinations, pickpocketing is the biggest concern here. So, be careful with your belongings when taking public transport and around the city's main attractions.

- Is Paris expensive?

Yes, Paris is one of the most expensive cities in the world, especially when it comes to hotels. Average spending in the City of Light is high, not only when compared to other continents, but also other European cities.

Photo: Emily Morter/Unsplash

Post



Stamps are available from kiosks and news agents. For mail overseas, it is advisable to visit a post office. The central post and sorting office of the Louvre is open from early in the morning until midnight.

Photo: Ali Bakhtiari/Unsplash

Address: Post Office Centre D'examen Du Code De La Route, 50 Rue du Louvre, Paris

Opening hours: Mon-Sat 8am-midnight, Sun 10am-midnight

Phone: +33 9 70 82 36 31

Internet: www.laposte.fr

Pharmacy



Pharmacie des
Champs-Élysées 84
Avenue des
Champs-Élysées +33 1 45
62 02 41 Open Mon-Sat
9am-8pm, Sun

10am-8pm

Pharmacie Lafayette Des Halles

10 Boulevard de Sébastopol

+33 1 42 72 03 23

Open Mon-Sat 8:30am-9pm, Sun 9am-9pm

Photo: Dima Mukhin/Unsplash

Electricity

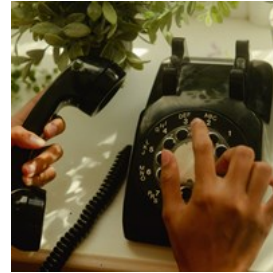


In France, the electrical supply operates at a voltage of 230V and a frequency of 50Hz. The country employs two main types of electrical plugs: type C and type E. Type C plugs feature two round pins. Type E plugs, on the other hand,

also have two round pins but include an additional hole for the earth (ground) pin.

Photo: Bykfa/Shutterstock

Telephone



Country code: +33 Area
code: 1

Photo: Wesley Hilario/Unsplash

Population

2,102,650 (2023)

Currency

Euro (EUR) €1 = 100 cents

Opening hours

General opening hours in Paris are Mon-Sat 9am-7pm. Some larger department stores and shopping centres may stay open until 8:00 PM or later on weekdays. Banks are open Mon-Fri 9am-5pm.

Internet

parisjetaime.com/eng

Newspapers

Le Monde: www.lemonde.fr

Le Figaro: www.lefigaro.fr

L'Officiel des Spectacles: www.offi.fr

Emergency numbers

Emergency: 112 / 15

Police: 17

Fire Brigade: 18

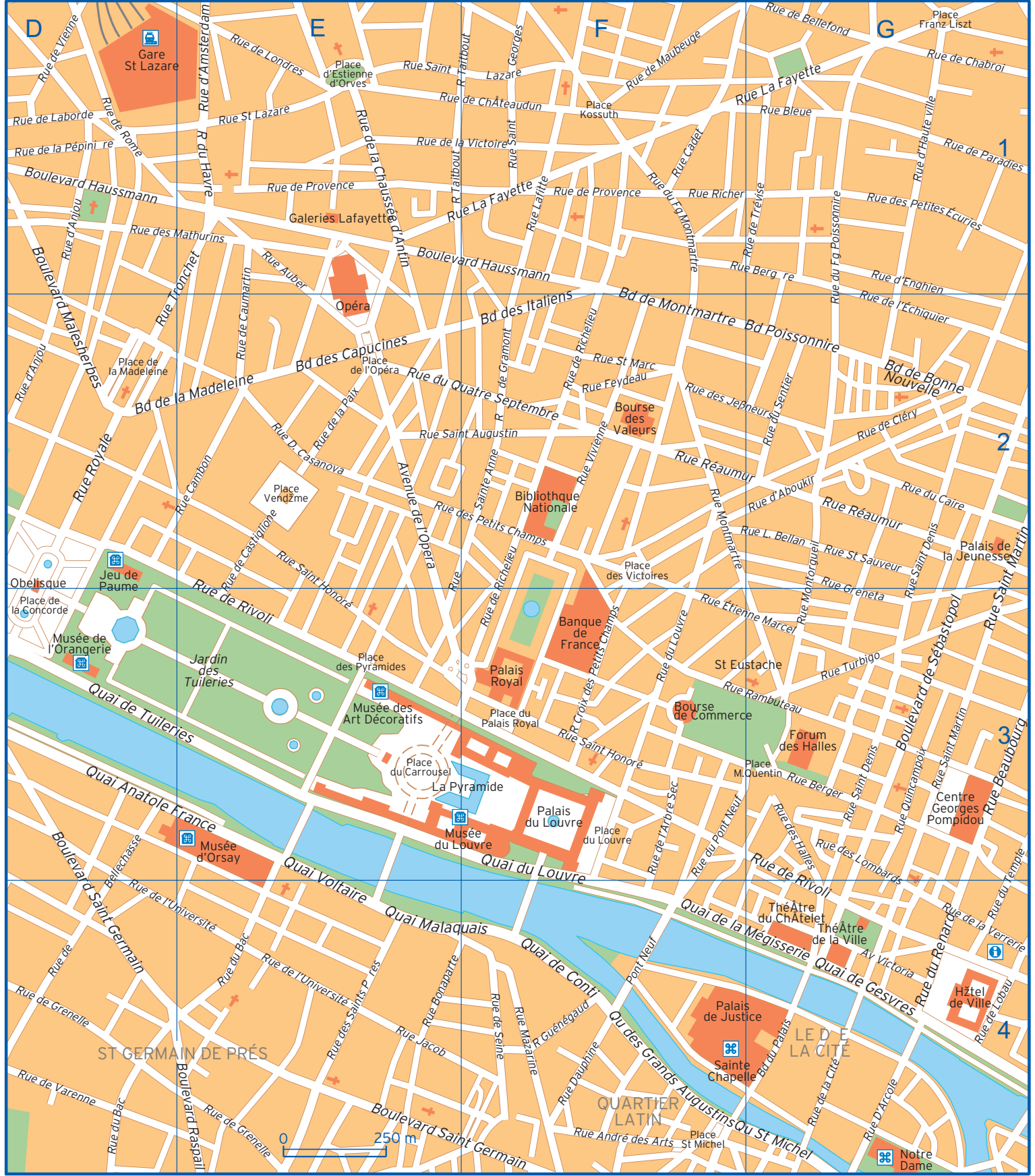
Tourist information

Point Info Tourisme at Galeries Lafayette

48 Boulevard Haussmann, Paris

+33 1 53 16 23 76

Open Mon-Sat 10am-8:15pm, Sun 11am-7:45pm



		Boulevard Haussmann	C1 D1 E1 F1	Quai des Grands Augustins	F4
Avenue A. de Mun	A3	Boulevard Malesherbes	D1 D2	Quai du Louvre	F3 F4
Avenue Bosquet	B3 B4	Boulevard Poissonnière	F2 G2	Quai d'Orsay	B3 C3
Avenue Bouvard	A4 B4	Boulevard Raspail	E4	Quai Malaquais	E4 F4
Avenue C. Rislér	B4	Boulevard Saint Germain	D3 D4 E4 F4	Quai Staint Michel	F4 G4
Avenue Carnot	A1	Cours Albert 1er	B3 C3	Quai Voltaire	E3 E4
Avenue Ch. Girault	C2	Cours la Reine	C3 D3	Rond Point des Champs Élysées	C2
Avenue de Friedland	B1	Place Charles de Gaulle	A1	Rue André des Arts	F4
Avenue de la Bourdonnais	A3 B4	Place Clémenceau	C2	Rue Auber	E1
Avenue de la Grande Armée	A1	Place de Finlande	C3	Rue Balzac	B1
Avenue de l'Opera	E2	Place de la Concorde	D3	Rue Beaubourg	G3
Avenue de Marigny	C2	Place de la Madeleine	D2	Rue Beaujon	B1
Avenue de Messine	C1	Place de la Résistance	B3	Rue Berger	G3
Avenue de New York	A3 A4	Place de l'Alma	B3	Rue Bergère	F1 G1
Avenue de Suffren	A4 B4	Place de l'Opéra	E2	Rue Bleue	G1
Avenue de Tourville	C4	Place de l'École Militaire	B4 C4	Rue Bonaparte	E4
Avenue de Wagram	A1 B1	Place de Varsovie	A3	Rue Brunel	A1
Avenue des Champs Élysées	B1 C2 D2	Place des Etats-Unis	A2	Rue Cadet	F1
Avenue des Nations Unies	A3	Place des Invalides	C4	Rue Cambon	E2
Avenue du Maréchal Gallieni	C3 C4	Place des Pyramides	E3	Rue Croix des Petits Champs	F3
Avenue du Président Wilson	A3	Place des Ternes	B1	Rue D. Casanova	E2
Avenue Dutuit	C2 C3	Place des Victoires	F2	Rue Dauphine	F4
Avenue d'Iéna	A2	Place du Carrousel	E3	Rue de Bellechasse	D3 D4
Avenue E. Tuck	C2 D3	Place du Général Gouraud	B4	Rue de Bellefond	G1
Avenue Foch	A1	Place du Louvre	F3	Rue de Berri	B1
Avenue Franklin D. Roosevelt	C1 C2	Place du Palais Bourbon	D3	Rue de Bourgogne	D3 D4
Avenue G. Eiffel	A4	Place du Palais Royale	F3	Rue de Castiglione	E2 E3
Avenue Gabriel	C2 D2	Place d'Estienne d'Orves	E1	Rue de Caumartin	E1 E2
Avenue George V	B2	Place Francois 1er	C2	Rue de Chabroi	G1
Avenue Hoche	B1	Place Franz Liszt	G1	Rue de Châteaudun	E1 F1
Avenue Kléber	A2 A3	Place Jacques Rueff	B4	Rue de Cléry	G2
Avenue M. Mahon	A1	Place Joffre	B4	Rue de Courcelles	B1 C1
Avenue Marceau	B2	Place Kossuth	F1	Rue de Gramont	F2
Avenue Matignon	C2	Place M.Quentin	G3	Rue de Grenelle	B4 D4 E4
Avenue Montaigne	B2 C2	Place Saint Augustin	D1	Rue de la Bienfaisance	D1
Avenue Pierre 1er de Serbie	A3 B2	Place Saint Michel	F4	Rue de la Chaussée d'Antin	E1
Avenue Rapp	B3 B4	Place Vauban	C4	Rue de la Cité	G4
Avenue Victor Hugo	A1 A2	Place Vendôme	E2	Rue de la Fédération	A4
Avenue Victoria	G4	Pont Alexandre III	C3	Rue de la Paix	E2
Avenue Winston Churchill	C2 C3	Pont de la Concorde	D3	Rue de la Pépinière	D1
Boulevard des Capucines	E2	Pont de l'Alma	B3	Rue de la Verrerie	G4
Boulevard de Bonne Nouvelle	G2	Pont des Invalides	C3	Rue de la Victoire	E1 F1
Boulevard de la Madeleine	D2 E2	Pont d'Iéna	A3	Rue de Laborde	D1
Boulevard de la Tour Maubourg	C3 C4	Pont Neuf	F4	Rue de Lisbonne	C1
Boulevard de Montmartre	F2	Quai Anatole France	D3 E3	Rue de Lobau	G4
Boulevard de Sébastopol	G3	Quai Branly	A3 A4 B3	Rue de Londres	E1
Boulevard des Invalides	C4	Quai de Conti	F4	Rue de Longchamp	A3
Boulevard des Italiens	F2	Quai de Gesvres	G4	Rue de Lübeck	A2 A3
Boulevard du Palais	G4	Quai de Tuileries	D3 E3	Rue de l'Arbre Sec	F3

Rue de l'Université	A3 B3 C3 D3 E4	Rue du Fg Montmartre	F1	Rue Montorgueil	G2 G3
Rue de l'Échiquier	G2	Rue du Fg Poissonnière	G1 G2	Rue P. Valéry	A2
Rue de l'Élysée	D2	Rue du Havre	E1	Rue P.Charron	B2
Rue de Maubeuge	F1	Rue du Louvre	F3	Rue Quincampoix	G3
Rue de Miromesnil	C1	Rue du Pont Neuf	F3	Rue Rambuteau	F3 G3
Rue de Paradies	G1	Rue du Quatre Septembre	E2 F2	Rue Richer	F1 G1
Rue de Penthièvre	C1 D1	Rue du Renard	G4	Rue Roquépine	D1
Rue de Ponthieu	B2 C2	Rue du Sentier	G2	Rue Royale	D2
Rue de Provence	E1 F1	Rue du Temple	G3 G4	Rue Réaumur	F2 G2
Rue de Richelieu	F2 F3	Rue d'Amsterdam	E1	Rue Saint Augustin	E2 F2
Rue de Rivoli	E2 E3 G3 G4	Rue D'Arcole	G4	Rue Saint Denis	G2 G3
Rue de Rome	D1	Rue d'Artois	B1 C1	Rue Saint Dominique	B3 C3 D3
Rue de Seine	F4	Rue d'Enghien	G1 G2	Rue Saint Georges	F1
Rue de Trévise	G1	Rue d'Haute ville	G1	Rue Saint Honoré	E2 E3 F3
Rue de Varenne	D4	Rue Fabert	C3	Rue Saint Lazare	E1 F1
Rue de Vienne	D1	Rue Feydeau	F2	Rue Saint Martin	G2 G3
Rue des Acacias	A1	Rue Francois 1er	B2	Rue Saint Sauveur	G2
Rue des Halles	G3	Rue Fresnel	A3	Rue Saint Saëns	A4
Rue des Jeûneurs	F2 G2	Rue Galilée	A2 B2	Rue Sainte Anne	E3 F2
Rue des Lombards	G3 G4	Rue Greneta	G2 G3	Rue St Marc	F2
Rue des Mathurins	D1 E1	Rue Guénégaud	F4	Rue Taitbout	E1 F1
Rue des Petites Écuries	G1	Rue Jacob	E4	Rue Tronchet	D2 E1
Rue des Petits Champs	E2 F2	Rue L. Bellan	F2 G2	Rue Turbigo	G3
Rue des Saints Pères	E4	Rue La Boétie	C1 C2 D1	Rue Vaneau	D4
Rue du Bac	D4 E4	Rue La Fayette	E1 F1 G1	Rue Vivienne	F2
Rue du Caire	G2	Rue Lafitte	F1	Rue Washington	B1
Rue du Colisée	C2	Rue Lauriston	A2	Rue Étienne Marcel	F3 G3
Rue du Dôme	A2	Rue Montmartre	F2		