



Photo: S-F/shutterstock



S.Borisov/shutterstock



William Perugini/shutterstock



Engel Ching/shutterstock

London is the cultural, political, and economic heart of Britain, famous for its world-class museums, galleries, royal palaces, shopping destinations, West End theatre shows and award-winning restaurants. Whether you want to stay in a 5-star luxury hotel and sip Champagne on the London Eye or find a cheap hostel and stroll around one of London's beautiful Royal Parks, you're sure to find something that suits your budget and interests.

Events



Christmas Markets in London

They say you can start to feel Christmas coming as early as October in the U...



Changing of the Guard at B...

The Changing of the Guard or Guard Mounting is an exchange of guard duties a...



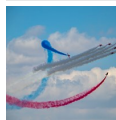
British Summer Time Music ...

The Barclaycard British Summer Time music festival takes place every year in...



RHS Chelsea Flower Show

The world's greatest flower show takes place in West London over a four-day ...



Trooping the Colour – King...

To celebrate The King's birthday in June each year, the tradition of Troopin...

Top 5



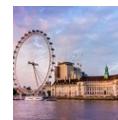
Buckingham Palace

During the summer months, Buckingham Palace — the official residence of King...



Houses of Parliament

Take a tour of the Palace of Westminster, also referred to as the Houses of ...



London Eye

At a staggering height of 135 metres (443 ft), The London Eye offers a super...



River Thames Cruise

See London from a different angle by taking a cruise along the famous River ...



Stonehenge, Windsor Castle...

Discover three gems outside of London on a fun day trip to Stonehenge, Winds...

THE CITY



ESB Professional/Shutterstock.com

London is a world-class city and the heart of British politics, culture and commerce. Its history stretches back thousands of years, and remnants of this fascinating past can still be found across the capital — from the Tower of London, a gruesome site of Medieval torture, to the majestic Buckingham Palace.

A captivating mix of old and new, London is also renowned for its creativity, innovation and originality in art, theatre, music, design and cuisine. It is home to countless art galleries and museums, including the Tate Modern, National Gallery and British Museum, which possesses some of the world's finest treasures. And best of all, entry to most of these museums and galleries is free!

To catch all the 'big-hitters' in one go, you can't beat a walk along the River Thames. Strolling from Tower Bridge to the Houses of Parliament you'll pass the Tower of London, Shakespeare's Globe, Tate Modern, the Southbank Centre, the National Theatre, the London Eye, the SEA LIFE London Aquarium and London Dungeon. In addition to these world-famous attractions, there are many more to discover during your stay.

The West End is the place to go to see London's top theatre shows and musicals. Alongside

classics including *Les Misérables*, *Phantom of the Opera* and *The Woman in Black*, you will find hit contemporary shows, such as *Billy Elliot*, *The Lion King* and *Thriller - Live*. Don't forget to explore the many off-West End venues too, such as the National Theatre, The Old Vic and (during the summer months) Regent's Park Open Air Theatre.

In the West End you will also find some of London's top shopping destinations, from Oxford Street to Seven Dials. Different neighbourhoods are known for other unique opportunities for shopping: Notting Hill is renowned for its antiques and Portobello Market, Greenwich has an excellent arts and crafts markets, while Westfield London City and Westfield Stratford are the city's most famous malls.

If you would rather save money than spend it, the eight Royal Parks are well worth a visit — and a great spot for a picnic. Visit Greenwich Park to drop in on the Royal Observatory, walk through Kensington Gardens to see Kensington Palace, take a paddle on the Hyde Park boating lake, see Buckingham Palace from scenic St James's Park, spot deer at Richmond Park and Bushy Park, and meet the animals at London Zoo, which lies within Regent's Park.

Along the way indulge your taste buds with delicious food at one of London's many restaurants, gastropubs and pop-up eateries. You can eat food prepared by a celebrity chef, discover modern British cuisine, or eat food from anywhere in the world — be it Indian, Chinese, Persian, Greek, Italian or Lebanese. Top off your perfect day with a fancy cocktail, excellent wine or locally brewed beer at a top London pub or bar — and maybe a boogie at one of the capital's buzzing nightspots and clubs.

DO & SEE



ESB Professional/shutterstock

London is full of things to do and see. From famous attractions such as the London Eye, the Palace of Westminster, the Big Ben and the Tower of London to much lesser known ones that are almost secret. There are also exciting shopping destinations, vast areas of green parkland in the middle of the city and much, much more.

Read on for inspiration and handy tips on places you just can't miss while you're in the capital. Many attractions on this list are free to enter, giving you another great reason to fall in love with London.

Buckingham Palace



During the summer months, Buckingham Palace — the official residence of King Charles III — opens the doors of its elegant State Rooms to the public. As well as proving a very fancy backdrop for many official royal engagements, the rooms contain some of the finest treasures from the Royal Collection, including paintings, sculptures and fine French furniture.

Photo: DaLiu/shutterstock

Address: Buckingham Palace, London

Public Transport: Victoria, Green Park and Hyde Park Corner tube stations

Opening hours: July–September

Phone: +44 20 7766 7300

Internet: www.royalcollection.org.uk

More Info: Prebooking tickets recommended. None but the most expensive guided tours you can buy online include admission tickets to the palace

Houses of Parliament



Take a tour of the Palace of Westminster, also referred to as the Houses of Parliament, and experience 1,000 years of history. Visitors are

welcomed into the building through Westminster Hall, before following in the footsteps of the Queen at the State Opening of Parliament. Marvel at the Victorian splendour of the Lords Chamber and see the famous green benches in the Commons Chamber. Audioguides and tours are available in English, French, German, Italian, Spanish, Russian and Mandarin.

Photo: Richie Chan/Shutterstock.com

Address: Westminster, London

Public Transport: Westminster tube station

Opening hours: Saturdays & weekdays when Parliament is not in session

Phone: +44 20 7219 3000

Internet: www.parliament.uk/visiting

London Eye



At a staggering height of 135 metres (443 ft), The London Eye offers a superb view of the capital's most famous attractions. A full rotation

around the observational wheel in one of the glass capsules lasts some 30 minutes and it is so popular that each year it receives more visitors than the Taj Mahal and the Great Pyramids of

Giza. And once you've taken a 360-degree ride on the wheel you'll understand why.

Photo: fedjason/Shutterstock

Address: Riverside Building, County Hall, Westminster Bridge Road, London

Public Transport: Westminster and Waterloo tube stations

Opening hours: Daily 11am–6pm

Phone: +44 870 990 8883

Internet: www.londoneye.com

River Thames Cruise



See London from a different angle by taking a cruise along the famous River Thames. Glide by some of London's top attractions from

Westminster to Greenwich, and listen to the entertaining live commentary as you pass sights such as the Shakespeare's Globe, Tower Bridge, and the Tower of London.

Photo: Charles Postiaux/Unsplash

Stonehenge, Windsor Castle & Bath from London



Discover three gems outside of London on a fun day trip to Stonehenge, Windsor Castle, and the historic town of Bath. First, pay a

visit to Windsor Castle, home to the British royal family, for a tour of the State Apartments and St George's Chapel. Then, continue to Salisbury, where you'll get to see the enigmatic Stonehenge rock formations. Later, explore the UNESCO World Heritage-listed city of Bath, known for its elegant Georgian architecture and Roman baths.

Photo: Ankit Sood/Unsplash

British Museum



One of the largest and most interesting museums in the world, the British Museum is home to some of the most treasured historical

artefacts ever found. The extensive exhibition includes the Rosetta Stone, Assyrian treasures, Egyptian mummies and the museum's spectacularly illuminated Great Court, where you can find the museum's new restaurant. This restaurant is an ideal spot for taking afternoon tea under the court's spectacular roof. Free tours of the museum and guides are also available. The tours are led by knowledgeable experts in their field of study — don't miss this amazing learning opportunity.

Photo: Nicolas Lysandrou/unsplash.com

Address: Great Russell Street, London

Public Transport: Holborn, Tottenham Court Road, Russell Square, and Goodge Street tube stations

Opening hours: Daily 10am–5pm

Phone: +44 20 7323 8000

Tickets: Free (some temporary exhibitions are ticketed)

Internet: www.britishmuseum.org

Email: info@britishmuseum.org

Tower of London



Tower of London is one of the most famous fortified buildings in the world.

It's also a mysterious place full of dark secrets, strange stories and

historic relics. Here you can admire the priceless Crown Jewels, explore the Medieval Palace, visit the infamous Bloody Tower, and go on a tour with a Yeoman Warder to learn about the many executions that took place here.

Photo: Justin Black/Shutterstock.com

Address: Tower Hill, London
Public Transport: Tower Hill tube station
Phone: +44 20 3166 6000
Internet: www.hrp.org.uk/tower-of-london

Soho



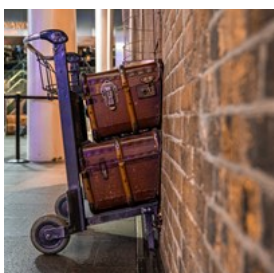
Soho is an absolute must-see, since it's so multifaceted. Dean, Frith, Beak, and Old Compton streets are lively around the clock, and

long-running Ronnie Scott's Jazz Club can be found here. Shaftesbury Avenue attracts theatre-goers, while Carnaby, Oxford and Regent streets and the iconic Liberty's department store are there for your shopping needs. Music shops, small cafes and quaint bakeries are on every corner!

The energetic streets of Soho are the most popular nightlife destination. The neighbourhood still retains a somewhat risqué vibe with bars, cafes and restaurants that cater to hip crowds of international creatives. Soho is also known as the centre of LGBTQA+ community, so don't miss out on all the gay and lesbian party spots in the area.

Photo: Mikel Parera/unsplash.com
Address: Soho, West End, London
Public Transport: Oxford Circus, Tottenham Court Road or Piccadilly Circus tube station
Internet: www.thisissoho.co.uk

Platform Nine & Three-Quarters



Locals know King's Cross as one of the city's busiest train stations serving much of the country since 1852. The place became

internationally famous when Harry Potter used

the station on his train journey to Hogwarts. Take a picture with a trolley disappearing into the brick wall and get some wizarding memorabilia from the Potter-themed souvenir shop.

Photo: Pandora Pictures/shutterstock
Address: King's Cross railway station, London
Opening hours: The souvenir shop: Mon-Sat 8am-8pm, Sun 9am-8pm
Internet:
www.harrypotteronlocation.co.uk/the-harry-potter-shop

Shakespeare's Globe Theatre



Shakespeare's Globe Theatre is a reconstruction of the original open-air theatre where playwright, William Shakespeare, first staged many of his famous plays such as Romeo and Juliet, Hamlet, and Midsummer Night's Dream.

On the banks of the Thames, just a few hundred yards away from its original location, the Globe stages classic and modern interpretations of Shakespeare's works as well as of brand new plays. There is also an exhibition with audio guides available in English, French, German, Spanish, Italian, and Japanese as well as expert guided tours.

Photo: Victor Moussa/Shutterstock.com
Address: 21 New Globe Walk, Bankside, London
Public Transport: Blackfriars, London Bridge and Mansion House tube stations
Opening hours: Open at specific times for tours & performances
Phone: +44 20 7902 1400
Internet: www.shakespearesglobe.com
Email: info@shakespearesglobe.com

Chinatown



London's Chinatown is a vibrant neighbourhood full of authentic Asian restaurants, shops, supermarkets and secret bars, adorned with red lanterns and red arches. Try some authentic buns at BaoziInn Romilly Street, Cantonese staples such as roast duck on rice at Café TPT or drop by Gerrard's Corner for a generous portion of nostalgia and the adorable retro vibe. There is always something new to explore here!

Photo: Luca Vavassori/unsplash.com

Address: Gerrard Street, London

Internet: www.chinatown.co.uk/en

Natural History Museum



The Natural History Museum houses hundreds of amazing exhibits from the natural world in one of London's most beautiful landmark buildings. Highlights include the popular Dinosaurs gallery, the model blue whale and the Cocoon specimen centre special. Events and debates are held in the Darwin Centre high-tech Attenborough Studio, where you'll have the chance to meet important scientists.

Photo: Joshua Rawson-Harris/unsplash.com

Address: Cromwell Road, London

Public Transport: South Kensington and Gloucester Road tube stations

Opening hours: Daily 10am-5:50pm

Phone: +44 20 7942 5000

Tickets: Free admission. Some temporary exhibitions are ticketed. Booking ahead is a good idea

Internet: www.nhm.ac.uk

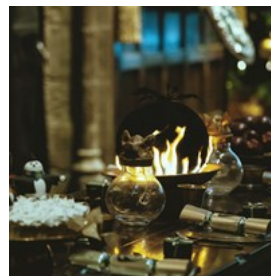
Shakespeare's Stratford-upon-Avon & Cotswolds Tour from London



Leave the hustle and bustle of London behind to discover England's storybook villages as you tour the charming Cotswolds and the medieval town of Stratford-upon-Avon. Walk in the footsteps of England's most iconic playwright as you tour Shakespeare's birthplace and Anne Hathaway's Cottage in Stratford-upon-Avon. Revel in the quintessentially English villages and thatched-roof cottages of the Cotswolds as you visit Bibury, Burford, and Bourton-on-the-water.

Photo: Christopher Eden/Unsplash

Warner Bros. Studio Tour London - The Making of Harry Potter



Step into the magical world of Harry Potter and visit the film sets where the movies were shot in the Warner Bros. Studio Tour London — The Making of Harry Potter. On the tour, you can nose around Dumbledore's office, enter the Great Hall, walk down Diagon Alley, see how they made Harry Potter fly on his broomstick and watch special effect animatronics come to life. A must-do for fans of the world's favourite wizard.

Photo: Rhii Photography/unsplash.com

Address: Studio Tour Drive, Leavesden

Jack the Ripper Tour



Uncover the legend of the notorious Jack the Ripper on a spine-chilling London night tour. Follow your expert guide through the dimly lit backstreets of Whitechapel and listen to the disturbing tales and conspiracy theories surrounding one of history's most infamous serial killers. See the streets of Victorian London brought to life with innovative RIPPER-VISION™ projections.

Photo: Tom Rogers/Unsplash

St Paul's Cathedral



The 17th century St Paul's Cathedral on Ludgate Hill is one of the capital's most iconic buildings. Designed by the illustrious Sir Christopher Wren, St Paul's was the tallest building in London until as late as 1962. Use the touchscreen multimedia guides or take a guided tour to learn about the famous interior or, if you're feeling fit, climb up to the Whispering Gallery and try out the acoustics. From there you can carry on making your way up to the Golden Gallery atop the dome, where you'll be rewarded with breathtaking views of London. You can also descend into the crypt where you'll find memorials of important historical figures such as Admiral Lord Nelson.

Photo: Jonathan Chng/unsplash.com

Address: St Paul's Churchyard, London

Public Transport: St Paul's, Mansion House and Blackfriars tube stations

Phone: +44 20 7246 8350

Internet: www.stpauls.co.uk

Email: reception@stpaulscathedral.org.uk

Hyde Park



Covering over 350 acres, Hyde Park is a green haven in the centre of London. The park is home to some 4,000 trees, a large lake, a meadow and ornamental flower gardens. It features a busy programme of activities and events which include horse riding, skating, cycling, swimming and boating. Highlights to look out for include the Serpentine Bridge, the Joy of Life fountain, the Achilles statue, the Diana Memorial Fountain and Speaker's Corner.

Photo: Simon Hurry/unsplash

Address: Hyde Park, London

Public Transport: Lancaster Gate, Queensway, Marble Arch, Hyde Park Corner and Knightsbridge tube stations

Opening hours: Daily 5am-midnight

Phone: +44 300 061 2114

Tickets: Free entry

Internet: www.royalparks.org.uk/parks/hyde-park

Email: hyde@royalparks.org.uk

National Gallery



You will find vast collections of some of the most famous, beautiful and awe-inspiring paintings in the world at the National Gallery.

Treat yourself to some of the best artistic production there is and ever has been. Feast your eyes on masterpieces by Leonardo da Vinci, Michelangelo, Titian, Rembrandt, Vermeer, Turner, Monet or Van Gogh.

Photo: Cedric Weber/Shutterstock.com

Address: Trafalgar Square, London

Public Transport: Charing Cross tube Station

Opening hours: Daily 10am-6pm, Fri until 9pm

Phone: +44 20 7747 2885

Tickets: Free admission

Internet: www.nationalgallery.org.uk
Email: information@ng-london.org.uk

Leicester Square



Leicester Square is a pedestrianised square surrounded by a number of nationally significant cinemas with some of the city's biggest screens, as

well as a variety of restaurants. The Odeon Leicester Square, Empire, Leicester Square is often used for film premieres, so why not do a bit of Hollywood star-spotting while you're in London.

The lush garden in the middle of the square is the perfect spot for cooling off in summer or resting your feet. Cinephiles should definitely check out the programme of the Prince Charles Cinema. This independent cinema does screenings of cult films and marathon film runs.

Photo: Hulki Okan Tabak/unsplash.com

Address: West End, London

Internet: www.leicestersquare.london

More Info:

princecharlescinema.com/PrinceCharlesCinema.dll/Home

London Bus Tour, Hop On – Hop Off



Enjoy the Perfect Introduction to London. Embark on an adventure with Big Bus Tours. Our Non-stop London sightseeing tour allows

you to soak up the city's atmosphere with ease. Relax and enjoy fascinating facts about London's rich culture and dramatic history as you pass its famous landmarks and attractions. And, on selected Red Tour buses, pick up top tips from our experienced guides to help you uncover

London's secrets and stories. Our bus route has been carefully planned to ensure that you'll capture all the best sights of London, including Big Ben, the London Eye, Tower Bridge and Buckingham Palace.

Photo: Old Town Tourist/Shutterstock

Address: Green Park station, London

Phone: +4420 7808 6753

Internet: www.bigbustours.com/en/london/london-bus-tours

Brixton & the Electric Avenue



Brixton's Electric Avenue got its name for being the first market street in London to be lit with electric lights. Today, the avenue is a diverse and

eclectic food market, mostly specialising in African and Caribbean cuisine. Apart from the food, the area attracts bargain hunters in search of cameras, audio equipment, all manner of household goods, hair and beauty products and services, wigs, fishmongers, butchers, bakers, fruit and flower shops — you name it.

Brixton Village is a covered arcaded area of the market that brims with quirky shops, fruit and vegetable stands, and a plethora of cafés and restaurants. Brixton Academy is an iconic venue that hosts some of the biggest rock and pop acts in the world. The venue was originally opened as a theatre and cinema called the Astoria, but has since evolved into a concert venue: Madonna, Sex Pistols and The Smiths have all performed here.

Photo: William Barton/shutterstock

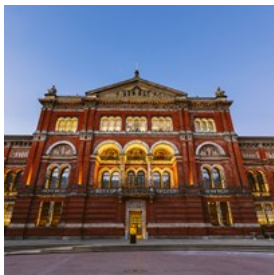
Hoxton & Shoreditch



Hoxton and Shoreditch are creative hubs brimming with colourful street art, hip cafes and bars, experimental galleries and popular nightclubs. Check out the many themed bars that serve endlessly inventive and delicious dishes from a long list of world cuisines. Vintage and design shops are plentiful.

Photo: Ambitious Creative Co. Rick Barrett/unsplash.com
Public Transport: Shoreditch High Street and Old Street tube stations

Victoria & Albert Museum



The Victoria and Albert Museum in Kensington has a glorious collection of design and art: from Islamic art to fine European jewellery. From famous watercolours by artists such as John Constable to iconic fashion creations by Vivienne Westwood. Explore the permanent collection or visit one of the museum's world-class, and ever-popular temporary exhibitions. Look out for the quirky Friday Lates events that happen on the last Friday of every month.

Photo: Martin Hesko/Shutterstock.com
Address: Cromwell Road, London
Public Transport: South Kensington tube station
Opening hours: Wed-Sun 10am-5:45pm
Phone: +44 20 7942 2000
Tickets: Free admission. Some exhibitions are ticketed. Book ahead
Internet: www.vam.ac.uk
Email: contact@vam.ac.uk

Madame Tussauds London



There's plenty to keep you entertained at Madame Tussauds London, with more than 300 wax figures, the Marvel Super Heroes 4D movie experience and Spirit of London Taxi Ride. The uncannily lifelike wax figures of famous (and infamous) individuals from throughout history are the obvious highlight. From Johnny Depp and One Direction to Muhammad Ali and the Queen, you are sure to recognise everyone who makes an appearance. Who is your favourite celebrity?

Photo: fritschk/shutterstock
Address: Marylebone Road, London
Public Transport: Baker Street tube station
Opening hours: Daily 10am-4pm
Internet: www.madametussauds.com/london/en
Email: guest.experience@madame-tussauds.com

Brick Lane



Brick Lane is the heart of London's Bangladeshi community. Road signs here appear in both English and Bengali, and the restaurants are authentic and unpretentious. Some iconic restaurants like the Bengal Village, Aladin, Smokestack, Hawksmoor, All Star Lanes can be found here. Beigel Bake, where you can get a traditional Jewish-style filled bagel with salt beef or smoked salmon is an absolute must.

Photo: EQRoy/shutterstock
Internet: www.visitbricklane.org

Sherlock Holmes Museum



The official home of the famous fictional detective Sherlock Holmes is 221b Baker Street. According to the books by Sir Arthur Conan Doyle, he lived

here from 1881 to 1904. The museum features Holmes' detailed study, life-size waxworks representing scenes from Holmes and Watson's adventures and a souvenir shop.

Photo: AVN Photo Lab/Shutterstock.com

Address: 221b Baker Street, London

Public Transport: Baker Street tube station

Opening hours: Wed-Sun 10am-5pm

Phone: +44 207 224 3688

Internet: www.sherlock-holmes.co.uk

Email: curator@sherlock-holmes.co.uk

Hampstead Heath



Hampstead Heath is one of the largest parks in London. It sits atop one of the highest points in London, offering excellent views of the London

skyline. The skyscrapers of Canary Wharf can be seen along with St Paul's Cathedral and other landmarks.

The Heath features grassy fields, wooded areas, and a number of large ponds. The water is never particularly warm, but do pack swimwear just in case the mood strikes you.

Photo: Amadeusz Misiak/unsplash.com

Public Transport: Hampstead Heath commuter trains station or Hampstead tube station

Opening hours: Always open

Internet: www.cityoflondon.gov.uk/things-to-do/green-spaces/hampstead-heath

Tate Modern



Housed in a large former power station, Tate Modern is Britain's leading art gallery when it comes to modern and contemporary art. As well

as the Tate's much anticipated exhibitions, there's a fantastic permanent collection to explore. It features works by artists as diverse as Matisse, Picasso, Rothko, Pollock, Warhol and Bourgeois.

Photo: Bikeworldtravel/Shutterstock.com

Address: Bankside, London

Public Transport: Southwark and Blackfriars tube stations

Opening hours: Daily 10am-6pm

Phone: +44 20 7887 8888

Tickets: Free admission. Some temporary exhibitions are ticketed. Advance booking is recommended.

Internet: www.tate.org.uk

Email: visiting.modern@tate.org.uk

British Film Institute – The BFI



The British Film Institute (BFI) is an absolute must for film aficionados. This film and television charitable organisation shows films every day:

from the latest and biggest blockbusters screened in their spectacular IMAX theatre, to old-time classics and indie darlings in their smaller, more intimate halls.

The renovated BFI venue is located in Southbank, which is the perfect spot to take in the riverfront views and hang out in the creative company of local film and theatre lovers. The BFI's waterfront restaurant and bar is great for dates or discussing the latest movie with friends.

Photo: Samuel Regan-Asante/unsplash.com

Address: Southbank Centre, Belvedere Road, London
Internet: www.bfi.org.uk

Kew Gardens



London's largest UNESCO World Site, the Royal Botanic Gardens, Kew, is the largest conservation project of its kind in the world. Visit

the Davies Alpine House and experience the high-altitude conditions that allow alpine plants to grow, take a trip to the desert to the jungle at Princess of Wales Conservatory, marvel at treacherous carnivorous plants and take in sweeping views of London from atop the Great Pagoda.

Photo: Kiev Victor/Shutterstock.com

Address: Richmond, United Kingdom

Public Transport: Kew Gardens tube station is 500m from Victoria Gate

Opening hours: Daily from 10am. Closing hours vary monthly

Phone: +44 20 8332 5655

Internet: www.kew.org/kew-gardens

SEA LIFE London Aquarium



Located on the South Bank, right next to London Eye, SEA LIFE London Aquarium harbours one of Europe's largest collections of

global marine life covering more than 500 species, 14 themed areas and two million litres of water. The exhibition includes favourites such as seahorses, octopuses, zebra sharks and clownfish. There are also interactive experiences, so you can see diving displays, watch the sharks being fed, or even try and feed the stingrays yourself. And don't forget to take a dive 'under the ocean' in the glass tunnel walkway.

Photo: NadyaEugene/Shutterstock.com

Address: County Hall, Westminster Bridge Road, London

Public Transport: Waterloo and Westminster tube stations

Phone: +44 20 7967 8025

Internet: www.visitsealife.com/london

Email: slondon@merlinentertainments.biz

Legoland Windsor



Built on 150 acres of parkland, the LEGOLAND Windsor Resort is located just outside of London. It is home to more than 55 rides, shows, attractions

and workshops, all geared towards children up to 12 years of age. This theme park is a great place for a family day trip. Jump on board a Lego submarine, take a good look at London's iconic landscape in miniature form, get soaked at the water rides and put your skills to the test at The Driving School.

Photo: Alphacolor/unsplash.com

Address: Winkfield Road, Windsor, Berkshire

Public Transport: Take a train from London Paddington to Windsor & Eton Central via Slough, or from Waterloo to Windsor & Eton Riverside direct. A shuttle bus service operates from both stations to the park.

Internet: www.legoland.co.uk

Email: customer.services@legoland.co.uk

More Info: The theme park has its own Resort Hotel with themed rooms.

Hampton Court Palace



Hampton Court Palace was King Henry VIII's favourite royal residence. It is brimming with thrilling stories and beautiful sights. Inside

the building you can visit the medieval Great Hall where William Shakespeare's company once performed, as well as the huge Tudor kitchens and the Haunted Gallery. There is also much to

see on the outside of the palace, what with the puzzling maze, the palace's beautiful gardens and a large park. Other highlights include daily tours and talks, as well as the annual Hampton Court Palace Flower Show.

Photo: Gail Johnson/Shutterstock.com

Address: East Molesey, Surrey

Public Transport: Hampton Court train station is just across the bridge.

Phone: +44 844 482 7777

Internet: www.hrp.org.uk/hampton-court-palace

Email: hamptoncourt@hrp.org.uk

WWT London Wetland Centre



The 105-acre WWT London Wetland Centre is a wildlife reserve on the outskirts of Central London. Here you will find plenty of rare birds,

beautiful lakes, tranquil gardens and calming meadows to walk amongst and admire. Keep your eyes open because you might be lucky enough to spot a family of otters. You can also take a free guided tour before relaxing at the Water's Edge Cafe. There are indoor and outdoor adventure areas for kids.

Photo: Lilian Dibbern/unsplash.com

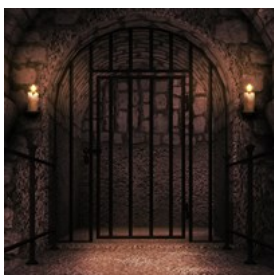
Address: Queen Elizabeth's Walk, Barnes, London

Phone: +44 20 8409 4400

Internet: www.wwt.org.uk/wetland-centres/london

Email: info.london@wwt.org.uk

London Dungeon



London's history is filled with gruesome tales and scary characters. The London Dungeon attraction on the south bank of the Thames

retells some of those bloody stories. Using

costumes, 360° sets and a multitude of special effects, London Dungeon takes you through 1000 years of the city's gory, gruesome and terrifying past in 90 minutes. Look out for Jack the Ripper and Sweeney Todd along the way. This is not an attraction for those of nervous disposition.

Photo: BackgroundStore/Shutterstock.com

Address: County Hall, Riverside Building, London

Public Transport: Waterloo and Westminster tube stations

Phone: +44 333 321 2001

Internet: www.thedungeons.com/london/en

Email: london.dungeon@merlinentertainments.biz

Museum of London



Discover the story of one of the world's greatest cities at The Museum of London. The tale begins with prehistoric London, moving on to the

influence of the Romans and Saxons on the city, and then on towards Medieval London. Along the way, you will encounter civil wars, deathly plagues and rampant fires. Journey through the Galleries of Modern London along Victorian streets and marvel at the lavish Lord Mayor's Coach display.

Photo: [steve estvanik/Shutterstock.com](https://www.shutterstock.com)

Address: 150 London Wall, City of London

Public Transport: Barbican, St Paul's and Moorgate tube stations

Opening hours: Daily 10am-5pm in the summer, Wed-Sun the rest of the year

Phone: +44 20 7001 9844

Tickets: Free entry

Internet: www.museumoflondon.org.uk

Email: info@museumoflondon.org.uk

More Info: Visit Museum of London Docklands to learn more about how the docks shaped the city

London Mithraeum



Reopened recently at the very site of its original discovery, the ruins of this Roman Temple of Mithras are open for public visits in the

basement of Bloomberg's European headquarters at number 12 Walbrook. There are also a few other exhibitions that include both historic artefacts and contemporary artwork. Entrance is free of charge.

Photo: Peter_Fleming/shutterstock

Address: 12 Walbrook, London

Opening hours: Tue-Sat 10am-6pm, Sun noon-5pm, Mon closed. First Thu of the month 10am-8pm

Phone: +44 20 7330 7500

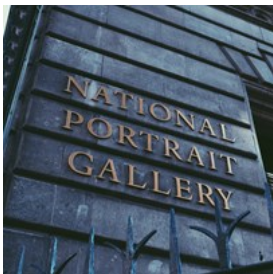
Internet: www.londonmithraeum.com

Email: info@londonmithraeum.com

More Info: Booking a spot in advance is recommended.

Admission is free

National Portrait Gallery



The National Portrait Gallery in Central London harbours more than 195,000 portraits of famous men and women who have shaped British

history from the 16th century to the present day. Painted by acclaimed artists such as Holbein, David Hockney, Cecil Beaton and Lucian Freud, sitters include kings, queens, film stars, politicians, musicians and many more. The gallery's rolling calendar of exhibitions is worth investigating as well, particularly the annual BP Portrait Awards.

Photo: Amy-Leigh Barnard/unsplash

Address: St Martin's Place, London

Public Transport: Charing Cross, Leicester Square and Embankment tube stations

Opening hours: Sun-Thu 10:30am-6pm, Fri & Sat

10:30am-9pm

Phone: +44 20 7306 0055

Tickets: Free admission. Some exhibitions are ticketed. Book ahead

Internet: www.npg.org.uk

DAY TRIPS FROM LONDON



Tomas Anton Escobar/Unsplash

Stonehenge, Windsor Castle & Bath from London



Discover three gems outside of London on a fun day trip to Stonehenge, Windsor Castle, and the historic town of Bath. First, pay a visit to Windsor Castle, home to the British royal family, for a tour of the State Apartments and St George's Chapel. Then, continue to Salisbury, where you'll get to see the enigmatic Stonehenge rock formations. Later, explore the UNESCO World Heritage-listed city of Bath, known for its elegant Georgian architecture and Roman baths.

Photo: Ankit Sood/Unsplash

Shakespeare's Stratford-upon-Avon and Cotswolds Tour from London



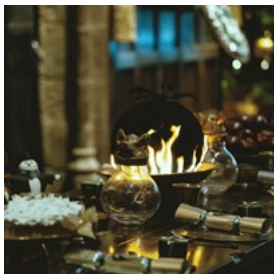
Leave the hustle and bustle of London behind to discover England's storybook villages as you tour the charming Cotswolds and the medieval town of Stratford-upon-Avon.

Walk in the footsteps of England's most iconic playwright as you tour Shakespeare's birthplace and Anne Hathaway's Cottage in Stratford-upon-Avon.

Revel in the quintessentially English villages and thatched-roof cottages of the Cotswolds as you visit Bibury, Burford, and Bourton-on-the-water.

Photo: Christopher Eden/Unsplash

Warner Bros. Studio Tour London – The Making of Harry Potter



Step into the magical world of Harry Potter and visit the film sets where the movies were shot in the Warner Bros. Studio Tour London – The Making of Harry Potter. On the tour, you can nose around Dumbledore's office, enter the Great Hall, walk down Diagon Alley, see how they made Harry Potter fly on his broomstick and watch special effect animatronics come to life. A must-do for fans of the world's favourite wizard.

Photo: Rhii Photography/unsplash.com

Address: Studio Tour Drive, Leavesden

EVENTS NOT TO BE MISSED



DisobeyArt/Shutterstock.com

London offers a jam-packed calendar of events that cater to a wide range of audiences all year round. This guide highlights the most popular and interesting ones that should definitely be on your bucket list.

Christmas Markets in London



They say you can start to feel Christmas coming as early as October in the UK. To feel the true spirit of Christmas in London head to one or more of these very festive destinations throughout the capital and thank us later. You don't want to miss the cosy Christmas markets peppered around the city centre. Be it at Leicester Square, the Southbank Centre or London Bridge City, why not warm yourself up with a mug of mulled wine by the river while you browse the stalls and take in the festive atmosphere.

Photo: Jamie Davies/unsplash.com

Address: Leicester Square, South Bank & London Bridge

Public Transport: Leicester Square, South Bank, London Bridge

Opening hours: December. See website for times and dates

Tickets: Free entry

Internet: www.timeout.com/london/things-to-do/london-events-in-december

Changing of the Guard at Buckingham Palace



The Changing of the Guard or Guard Mounting is an exchange of guard duties at Buckingham Palace. Watch the ceremony as each set of

guards dressed in traditional red tunics and bearskin hats takes over from their brothers in arms. You can also catch ceremonial guard changes at Windsor Castle and at the Tower of London.

Photo: Iacopo Guidi/Shutterstock.com

Address: Buckingham Palace, London

Public Transport: Green Park tube station

Opening hours: Usually starts at 10:45am & lasts around 45 minutes, with the actual handover taking place at 11am

Tickets: Free to enter

Internet: www.changing-guard.com

More Info: Times and dates change all the time and on short notice, so be sure to consult the schedule before your visit

British Summer Time Music Festival



The Barclaycard British Summer Time music festival takes place every year in Hyde Park. The week-long event covers many musical tastes,

from pop to rock to dance and hip hop. Find out more on their website.

Photo: Monkey Business Images/Shutterstock.com

Address: Hyde Park, London

Public Transport: Marble Arch, Hyde Park Corner, or Green Park tube stations

Tickets: Be sure to get your tickets way ahead of time

Internet: www.bst-hydepark.com

Email: customer@bst-hydepark.com

RHS Chelsea Flower Show



The world's greatest flower show takes place in West London over a four-day period in May. Each year is different from the last but the

vibrant small gardens and horticultural displays bring a splash of colour and scent to London's events calendar. Booking in advance is advisable.

Photo: Prettyawesome/shutterstock

Address: Royal Hospital Chelsea, Royal Hospital Road, Chelsea, London

Public Transport: Sloane Square tube station

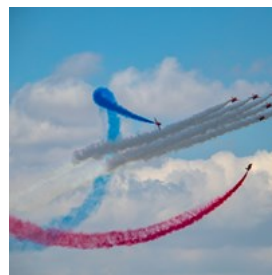
Opening hours: End of May

Internet:

www.rhs.org.uk/shows-events/rhs-chelsea-flower-show

Email: showscustomer@rhs.org.uk

Trooping the Colour – King's Birthday Parade



To celebrate The King's birthday in June each year, the tradition of Trooping the Colour takes place on Horse Guards Parade and The Mall near

Buckingham Palace. The ceremony of military pomp and pageantry includes a flypast by the Royal Air Force and a procession led by His Majesty.

Photo: Nick Fewings/unsplash.com

Address: Horse Guards Parade, Whitehall, London

Public Transport: Charing Cross, Embankment or Westminster tube stations

Internet: www.householddivision.org.uk/trooping-the-colour

Email: info@householddivision.org.uk

More Info: See the website for more information

Notting Hill Carnival



Europe's biggest street festival takes place every August Bank Holiday weekend in West London. The huge Caribbean-themed party takes place over a period of three days with the main parade held on the Monday. Expect colourful floats, dressed up performers and lots of music.

Photo: Glodi Miessi/unsplash.com

Address: Notting Hill area, West London

Opening hours: August Bank Holiday weekend: the last Sun & Mon of August

Tickets: Free entry

Internet: www.thelondonnottinghillcarnival.com

Email: info@nhcet.com

Totally Thames Festival



The whole month of September is dedicated to celebrating London's famous river. The Totally Thames Festival takes place over a period of 30 days. With more than 100 different artistic and cultural events, the festival takes over the city spreading out for miles. In 2014 there were guided walks, tours and tall ships regattas, as well as theatre, cinema and many other exciting ways to enjoy London. All of these events take place either on or by the river Thames.

Photo: Songquan Deng/Shutterstock.com

Address: Various locations along the river

Opening hours: Throughout September

Phone: +44 20 7928 8998

Internet: www.totallythames.org

Email: contact@thamesfestival.org

RESTAURANTS



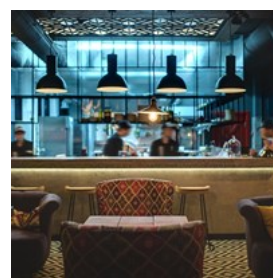
DisobeyArt/Shutterstock.com

The British culinary scene is a buzz in London, with innovative chefs rethinking traditional British classics and creating new favourites — all with an emphasis on fresh, local produce.

Thanks to London's rich mix of cultures, the capital's restaurants serve up delicious food from all corners of the globe. Whatever cuisine you fancy, you're sure to find it in London. Chinese, Japanese, Korean, Caribbean, Polish, French, Italian, Afghan, Ethiopian, American, Spanish, South African, Persian — the list goes on.

With Michelin Star restaurants, family-friendly eateries, cosy gastropubs, fast food joints and quirky cafes dotted all over the city, there's something for every budget too. Food halls and street food are on the rise, too, with new ones popping up seemingly every month.

Arcade Food Hall



Arcade Food Hall is an upscale, digital food hall — London's first — housing multiple restaurants, cafes and bars from up-and-coming food and drink talent under one roof.

Guests are treated to culinary offerings from all

over the world: from Thai curries, Indonesian street food, and North Indian fast food to Spanish tapas, Japanese sushi, and American-style burgers. Plus, daily provisions counter serving coffee, lunchtime sandwiches and pastries, and an immersive dessert experience from the UK's most exciting confectionery connoisseurs.

Photo: bezikus/Shutterstock.com
Address: 103-105 New Oxford St, London
Public Transport: Tottenham Court Road
Opening hours: Mon-Sat 8am-4:30pm, Sun 10am-4:30pm
Internet: www.arcade-london.com
More Info: Located in the Centre Point building

Kanada-Ya Piccadilly



Arguably London's best ramen chain now has three location across town. They specialise in tonkotsu (pork broth) ramen; some bowls

feature chicken bone broth or a combination of the two. All locations except the original one in Covent Garden serve a vegetarian option.

Photo: Artit Wongpradu/Shutterstock.com
Address: 3 Panton Street, London
Opening hours: Mon-Sun noon-3pm / 4pm-10pm
Phone: +44 20 7930 3511
Internet: www.kanada-ya.com
More Info: Find their other locations at 35 Upper Street and 64 St Giles High Street

Bang Bang Oriental Food Hall



Quite possibly the only place of its kind in Europe, Bang Bang Oriental Food Hall is a massive food court with spacious seating. Totally worth making the trip to Colindale. The top floor

hosts a couple dozen restaurants representing cuisines from all across the Asian continent, with a 360-seater Chinese restaurant occupying the ground level.

Photo: Artem Beliaikin/Shutterstock.com
Address: 399 Edgware Road, London
Public Transport: Colindale
Phone: +44 20 8205 9098
Internet: www.bangbangoriental.com

M.Manze



M.Manze is a bit of Cockney heritage dates back to 1902 and serves an all-time classic menu of pie, mash and jellied eel. Arrive Mon-Sat before 2pm to get your serve.

This Tower Bridge eatery holds significance in the gastronomic history of the area, but it's also earned a place in British popular culture appearing in numerous books, TV shows, and films, and formed the backdrop for Elton John's music video for his single 'Made in England'. Celebrities pop in for a meal quite often, too!

Photo: Chris Lawrence Travel/shutterstock
Address: 87 Tower Bridge Road, Bermondsey, London
Opening hours: Mon-Thu 10:30am-5:45pm, Fri 10am-6:45pm, Sat 10am-7:45pm, Sun 11am-2:45pm
Phone: +44 20 7407 2985
Internet: www.manze.co.uk
More Info: Two more locations in Peckham and Sutton

J Sheekey



Tucked away between Leicester Square and Covent Garden, J Sheekey has been in business since the 1890s and is the place to go for

sustainably sourced fish, oysters and shellfish. From Sheekey's Fish Pie to potted shrimps (plus vegetarian and meat options), there's plenty of selection for everyone.

Photo: Cesarz/Shutterstock.com

Address: 28-34 St Martin's Court, London

Public Transport: Leicester Square Tube station

Opening hours: Mon-Sat noon-11pm, Sun noon-6pm

Phone: +44 20 7240 2565

Internet: www.j-sheekey.co.uk

Inamo Soho



Inamo is a pioneering Oriental fusion restaurant and bar where the control of the dining experience is placed firmly in your own hands, thanks to an interactive ordering system. Instead of reading a long list of dish names, you simply pick your favourite from an illustrated food and drinks menu projected onto your table surface. The pan-Asian menu includes influences from Japan, China, Thailand, Korea and beyond.

Photo: Ekaterina Smirnova/shutterstock

Address: 134-136 Wardour Street, Soho, London

Public Transport: Tottenham Court Road and Oxford Circus Tube stations

Opening hours: Mon-Wed 4pm-11pm, Thu noon-11pm, Fri noon-11:30pm, Sat 11am-11:30pm, Sun noon-9:15pm

Phone: +44 20 7851 7051

Internet: www.inamo-restaurant.com

Email: reservations@inamo-restaurant.com

More Info: Check out their second location in Covent Garden

The Wolseley



Housed in a former car showroom on Piccadilly, The Wolseley is an elegant cafe-restaurant inspired by the grand European style of years

gone by. The food follows the same classic European thread, with favourite dishes including veal Holstein and chicken soup with dumplings. Pop in for breakfast, lunch, afternoon tea or dinner.

Photo: Chef photography/Shutterstock.com

Address: 160 Piccadilly, London

Public Transport: Green Park and Piccadilly Circus Tube stations

Opening hours: Mon-Fri 7am-11pm, Sat 8am-11pm, Sun 8am-10pm

Phone: +44 20 7499 6996

Internet: www.thewolseley.com

Email: info@thewolseley.com

Restaurant Gordon Ramsay



If the name alone doesn't sell it, the three Michelin stars that Restaurant Gordon Ramsay was honoured with should. Located in affluent

Chelsea, the restaurant serves up modern French food from carefully picked ingredients in an elegant, intimate atmosphere. Wear something smart to feel right at home.

Photo: vichie81/Shutterstock.com

Address: 68 Royal Hospital Road, London

Public Transport: South Kensington and Sloane Square Tube stations

Opening hours: Tue-Sat noon-2:15pm / 6pm-9:15pm

Phone: +44 20 7352 4441

Internet: www.gordonramsayrestaurants.com/restaurant-gordon-ramsay

Email: royalhospitalroad@gordonramsay.com

Borough Market



London's Borough Market is unsurprisingly popular — it's been gaining momentum since the 12th century, after all — but those who arrive for an early lunch can take advantage of this London fixture's ample offering of street food from all over the world, followed by a stroll through the stalls vending local produce.

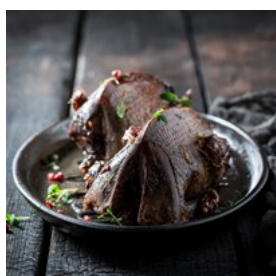
Photo: I Wei Huang/Shutterstock.com

Address: 8 Southwark St, London

Opening hours: Mon-Thu 10am-5pm, Fri 10am-6pm, Sat 8am-5pm, Sun 10am-2pm

Internet: www.boroughmarket.org.uk

Dinner by Heston Blumenthal



Heston Blumenthal's restaurant Dinner is known for its inventive menu of historically inspired British dishes. Choose from dishes such as Earl Grey Tea cured Salmon (c.1730), Spiced Pigeon (c.1780) and Tipsy Cake (c.1810). Alternatively, let the chef do the choosing by going for the Set Lunch Menu or splashing out on a seat at the Chef's Table, which directly faces the restaurant's custom-built show kitchen. Garden terrace tables are perfect for warmer days.

Photo: Shaiith/Shutterstock.com

Address: 66 Knightsbridge, London

Public Transport: Knightsbridge Tube station

Phone: +44 20 7201 3833

Internet: www.dinnerbyheston.com

Email: molon-dinnerhb@mohg.com

More Info: Located inside Mandarin Oriental Hyde Park hotel

Wild Heart



Located on the ground floor of the stylish Sanctum Soho Hotel, Wild Heart serves modern, seasonal British cuisine from breakfast through afternoon tea to dinner. A bar as well as a restaurant, it's also a great spot for a coffee, evening cocktail or glass of wine on their covered roof terrace.

Photo: Shebeko/Shutterstock.com

Address: 20 Warwick Street, Soho, London

Public Transport: Oxford Circus and Piccadilly Circus Tube stations

Phone: +44 20 7292 6100

Internet: www.sanctumsoho.com/restaurant

Email: info@sanctumsoho.com

More Info: Located inside the Sanctum Soho Hotel

Poppies Fish & Chips



On your way back from Camden Market and want to stop for a meal? At Poppies, you can experience the traditional dish of the British working classes the way it should be enjoyed. Why not sit down to a nice portion of tasty, sustainably caught cod with a serving of crisp and fluffy chips complete with tartare sauce and a slice of lemon on the side? Decorated with quirky 1940s memorabilia on the walls, Poppies is known as one of the capital's finest fish and chip shops. As well as the branch in Camden, you'll find another two in Spitalfields and Soho.

Photo: from my point of view/Shutterstock.com

Address: 30 Hawley Crescent, London

Public Transport: Camden Town tube station

Opening hours: Sun-Wed 11am-10pm, Thu-Sat 11am-11pm

Phone: +44 020 7267 0440

Internet: www.poppiesfishandchips.co.uk

OXO Tower Restaurant, Bar and Brasserie



Dine in true British style with a beautiful raised view across the River Thames. The OXO Tower restaurant, bar and brasserie is a great place

for a romantic meal, especially when combined with a casual stroll along the South Bank before and after your meal. Book ahead to make sure you get an alfresco table on the outdoor terrace and enjoy the scene with St Paul's Cathedral in the background. You can also expect to enjoy live jazz in the brasserie.

Photo: ariadna de raadt/Shutterstock.com

Address: Barge House Street, Oxo Tower Wharf, South Bank, London

Public Transport: Blackfriars Tube station

Phone: +44 20 7803 3888

Internet: www.harveynichols.com/restaurant/the-oxo-tower

Email: oxo.reservations@harveynichols.com

Mestizo Mexican Restaurant & Tequila Bar



Colourful and welcoming, Mestizo Mexican Restaurant and Tequila Bar serves quality, traditional Mexican cuisine with a refined

touch. Downstairs from the relaxing restaurant you'll also find a stylish tequila bar serving cocktails, tequila and 'antojitos' (Mexican tapas).

Photo: Sofia Felguerez/Shutterstock.com

Address: 103 Hampstead Road, London

Public Transport: Euston Square and Warren Street Tube stations

Opening hours: Mon-Sat noon-10pm, Sun noon-4pm / 5pm-10pm

Phone: +44 20 7387 4064

Internet: www.mestizomx.com

Email: eat@mestizomx.com

Gacho Piccadilly



The glitzy Piccadilly branch of Argentinian restaurant Gaucho spans four floors. Alongside the main restaurant is the Cavas De Gaucho wine

boutique, a ground-floor wine bar and a supper lounge on the top floor. Steaks, of course, are high on the menu, but there are many other dishes to try too, from Ecuadorian ceviche to Scamorza and potato ravioli.

Photo: hlphoto/Shutterstock.com

Address: 25 Swallow Street, London

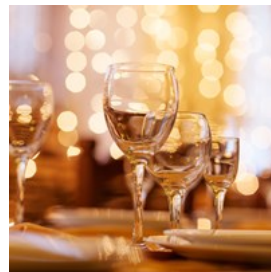
Public Transport: Piccadilly Circus and Green Park Tube stations

Opening hours: Sun-Thu noon-11pm, Fri-Sun 11:30am-11pm

Phone: +44 20 7734 4040

Internet: www.gauchorestaurants.com/restaurants/piccadilly

Sketch



Sketch is an eccentric, original and elegant venue off Regent Street founded by French master chef Pierre Gagnaire and

restaurateur Mazouz. The unique millennial pink space comprises five dining areas: The Parlour patisserie and restaurant, The Glade bar, The Gallery brasserie, the two Michelin-starred Lecture Room & Library dining room and The East Bar.

Photo: My Good Images/shutterstock

Address: 9 Conduit Street, Mayfair, London

Public Transport: Oxford Circus and Piccadilly Circus Tube stations

Phone: +44 20 7659 4500

Internet: www.sketch.london

Email: info@sketch.london

Masala Zone Bayswater



Colourfully decorated with Indian folk art and collages of firecracker labels, the Bayswater branch of Masala Zone is as warm and welcoming as the other restaurants in this growing chain. The menu takes inspiration from Indian street food and home-cooked dishes, with Indian grills and regional curries as well as tapas-style Thali platters.

Photo: Sahil Rattanaphas/Shutterstock.com

Address: 75 Bishops Bridge Road, Bayswater, London

Public Transport: Royal Oak and Bayswater Tube stations

Opening hours: Mon-Thu 5:30pm-10pm, Fri

5:30pm-10:30pm, Sat 12:30pm-10:30pm, Sun

12:30pm-9:30pm

Phone: +44 20 7221 0055

Internet: www.masalazone.com

Email: bayswater@masalazone.com

More Info: The Masala Zone chain has 6 more locations around London

Sarastro



Sarastro is renowned for its flamboyant interior: part stage set, part old curiosity shop. Taking a nod from the nearby West End theatres, the dining room features opera boxes, luxuriant velvet tablecloths and cosy booths. The menu is Mediterranean and live shows regularly take place, with live opera on Sundays and Mondays, swing and Motown on Thursdays and Latin rhythms on Fridays.

Photo: Travers Lewis/shutterstock

Address: 126 Drury Lane, London

Public Transport: Covent Garden, Holborn and Temple Tube stations

Opening hours: Mon-Fri 3pm-10:30pm, Sat noon-11pm, Sun

noon-10:30pm

Phone: +44 20 7836 0101

Internet: www.sarastro-restaurant.com

Email: info@sarastro-restaurant.com

Rainforest Cafe



Rainforest Cafe brings the sights and sounds of the jungle to London's famous Piccadilly Circus, with trumpets of elephants, gorilla roars, tropical fish tanks, an indoor waterfall and roaring thunderstorm sounds. Feeding time is a fun, family-friendly affair, with steaks, burgers, pasta and salads on the menu.

Photo: Quality Stock Arts/Shutterstock.com

Address: 20 Shaftesbury Avenue, London

Public Transport: Piccadilly Circus tube station

Opening hours: Mon-Fri noon-10pm, Sat & Sun 11am-10pm

Phone: +44 20 7434 3111

Internet: www.therainforestcafe.co.uk

Email: customercare@therainforestcafe.co.uk

The Blues Kitchen — Shoreditch



The Blues Kitchen is a well-established live music and burger restaurant in London's trendy East End. Pop in for lunch, brunch, dinner or an evening of cocktails at the bar while you enjoy the blues and soul acts on almost every day of the week. Bite into the big brisket burger, share the shrimp taco salad or dig into the szechuan chicken wings with creamy mango dip. And don't forget to choose a succulent side dish of onion rings and fries to accompany your meal.

Photo: zYGONEMA / Shutterstock.com

Address: 134-146 Curtain Road, Shoreditch, London

Opening hours: Mon-Wed noon-midnight, Thu noon-1am, Fri noon-2:30am, Sat 10am-3am, Sun 10am-11:30pm

Phone: +44 020 7729 7216

Internet: www.theblueskitchen.com

More Info: If you're not in Shoreditch you can always happen by their equally appealing Camden or Brixton branches

Locanda Locatelli



Michelin-starred restaurant Locanda Locatelli serves top-quality, traditional Italian food created with panache by head chef

Giorgio Locatelli. Stand-out dishes at the Central London eaterie (according to the Michelin guide) include scallops, celeriac purée and saffron vinaigrette; and wild sea bass baked in salt and herb crust, escarole, sultanas and pine kernels.

Photo: Kzenon/Shutterstock.com

Address: 8 Seymour Street, London

Public Transport: Marble Arch Tube station

Phone: +44 20 7935 9088

Internet: www.locandalocatelli.com

Email: info@locandalocatelli.com

Duke of Cambridge



The Duke of Cambridge is the first and only British pub to be certified as organic by the Soil Association. The menu at the Islington gastropub

unsurprisingly features an excellent range of delicious organic food and drinks, and changes daily according to what seasonal food is available.

Photo: Magdanatka/Shutterstock.com

Address: 30 St Peters Street, Islington, London

Public Transport: Angel tube station

Opening hours: Tue-Sat noon-10pm, Sun noon-6pm

Phone: +44 20 7359 3066

Internet: www.dukeorganic.co.uk

Email: duke@dukeorganic.co.uk

Hide



Distinguished with a Michelin star only 5 months after its opening, Hide is the result of an ambitious collaboration between acclaimed chef

Ollie Dabbous and Hedonism Wines. The ground-level restaurant features great value lunches (prices aren't low, but adequate for the level), while the fine dining affair "Above" has made a splash with its refined dishes and extravagant presentation.

Interiors draw clear inspiration from Green Park across the road.

Photo: Vershinin89/Shutterstock.com

Address: 85 Piccadilly, Mayfair, London

Phone: +44 20 3146 8666

Internet: www.hide.co.uk

Brick Lane



Brick Lane is the heart of London's Bangladeshi community. Road signs here appear in both English and Bengali, and the restaurants are

authentic and unpretentious. Some iconic restaurants like the the Bengal Village, Aladin, Smokestak, Hawksmoor, All Star Lanes can be found here. Beigel Bake, where you can get a traditional Jewish-style filled bagel with salt beef or smoked salmon is an absolute must.

Photo: EQRoy/shutterstock

Internet: www.visitbricklane.org

TOP 9 AFTERNOON TEAS



Ingus Krukltitis/Shutterstock.com

Delicate finger sandwiches, tempting cakes, pots of steaming tea, scones with lashings of jam and cream. With so many delicious ingredients, it's no wonder traditional afternoon tea remains as popular as ever. There are many top hotels, restaurants and cafes serving afternoon tea in London to this day, and there are many varieties available — from classic afternoon tea to low-calorie alternatives and even a gentleman's afternoon tea.

The afternoon tea is a rather elegant affair, so don't waste the opportunity to wear something smart and you'll feel right at home. The establishments in our list of the most notable afternoon teas all have dress code requirements.

Afternoon Tea at The Ritz



Afternoon tea at The Ritz is a London institution. In fact, it's so popular that you have to book at least four weeks in advance.

There is a stunning total of five afternoon tea sittings every day to keep up with demand and they all take place in the building's beautiful Palm Court. Once you're comfortably settled in, you can tuck into one of the four afternoon tea options available and choose from 17 different types of loose-leaf tea

while you listen to the pianist or harpist softly playing in the background.

Photo: Ingus Krukltitis/Shutterstock.com

Address: 150 Piccadilly, West End

Public Transport: Green Park Tube station

Opening hours: Served daily at 11:30am, 1:30pm, 3:30pm, 5:30pm & 7:30pm

Phone: +44 20 7300 2345

Internet: www.theritzlondon.com

Email: dining@theritzlondon.com

More Info: At The Ritz Hotel

Afternoon Tea at Fortnum & Mason



In 2012, Fortnum & Mason's newly renamed Diamond Jubilee Tea Salon was officially inaugurated by the Queen, the Duchess of

Cornwall and the Duchess of Cambridge. Today, having afternoon tea or high tea in the Tea Salon is a suitably regal matter. A selection of cakes and pastries from the Coronation Cake Carriage, salmon blinis, and tea and cake pairing menus are all available.

Photo: [petereleven/Shutterstock.com](https://www.shutterstock.com)

Address: 181 Piccadilly, West End

Public Transport: Green Park and Piccadilly Circus tube stations

Opening hours: Mon-Sat 10am-8pm, Sun 11:30am-6pm

Phone: +44 20 7734 8040

Internet: www.fortnumandmason.com

Email: reservations@fortnumandmason.co.uk

More Info: The Diamond Jubilee Tea Salon is located on the fourth floor of Fortnum & Mason

Afternoon Tea at Brown's Hotel



Afternoon tea at Brown's Hotel is served in the cosy, timeless setting of the English Tea Room, complete with wood panelling, fireplaces and

original art. Tuck into a selection of sweet and savoury snacks and enjoy a cup of tea from Brown's unique Prestige Seasonal Tea Library, all to the sound of music from the Baby Grand Piano. And have your plate replenished at no additional charge.

Photo: Maximum Exposure PR/Shutterstock.com

Address: Albemarle Street, Mayfair, London

Public Transport: Green Park & Piccadilly Circus tube stations

Phone: +44 20 7493 6020

Internet: www.roccofortehotels.com

Email: tea.browns@roccofortehotels.com

More Info: At Brown's Hotel

Afternoon Tea at Café Royal



Don your finest attire and prepare for an extraordinary indulgence at Café Royal, in the heart of Regent Street.

This opulent venue, once the favoured haunt of Oscar Wilde, offers a truly decadent afternoon tea experience in the lavish Grill Room, adorned with gold leaf and exquisite artistic ceilings.

As you savour an array of sumptuous sweets and overflowing champagne, accompanied by the gentle strains of a live pianist, you will be following in the footsteps of illustrious patrons such as Princess Diana, Winston Churchill, David Bowie, and Elizabeth Taylor. Every moment at Café Royal promises to be as exceptional and surprising as its storied past.

Photo: Magdanatka/Shutterstock.com

Address: 68 Regent Street, London

Public Transport: Piccadilly Circus tube station

Opening hours: Tue–Sun noon–5:30pm, Mon closed

Phone: +44 20 7406 3310

Internet: www.hotelcaferoyal.com/eat-drink/the-grill-room

Email: restaurants@hotelcaferoyal.com

Afternoon Tea at The Dorchester



Afternoon tea is served five times a day at The Dorchester in the timeless Promenade and at the elegant Spatisserie. Choose from

Vintage Afternoon Tea on The Balcony, the Dorchester Afternoon Tea, Champagne Afternoon Tea or the bite-size Spatisserie Afternoon Tea. Special seasonal teas are also available at different times of the year.

Photo: heygigpic/Shutterstock.com

Address: Park Lane, London

Public Transport: Hyde Park Corner & Green Park tube stations

Phone: +44 20 7629 8888

Internet: www.dorchestercollection.com/en/london/the-dorchester/restaurants-bars/#afternoon-tea

Email: restaurants.tdl@dorchestercollection.com

Afternoon Tea at Royal Albert Hall



Any music enthusiast will want to book afternoon tea at the Royal Albert Hall. This iconic London venue has hosted countless numbers of

memorable concerts throughout the years and it is home to the annual BBC Proms. Afternoon tea is served in the venue's very own Verdi Restaurant, from Wednesday to Sunday. Twinings tea is served alongside sweet treats and finger sandwiches. If you would like a classier upgrade you can always order a glass of

Moët & Chandon champagne.

Photo: T photography/Shutterstock.com

Address: Kensington Gore, South Kensington, London

Public Transport: Gloucester Road & South Kensington tube stations

Phone: +44 20 7589 8212

Internet:

www.royalalberthall.com/tickets/events/afternoon-tea

Email: food@royalalberthall.com

Afternoon Tea at Roseate House



Planning to visit Hyde Park and Kensington Gardens? Exploring the canals around Little Venice and Paddington? Why not take some time

out to rest and have afternoon tea at the luxurious Roseate House London (formerly known as Royal Park Hotel). Indulge your tastebuds and try the fresh raisin scones with Devonshire clotted cream, the lemon posset, the carrot cake, the Victoria sponge and the specialty loose leaf tea.

Photo: jreika/Shutterstock.com

Address: 3-5 Westbourne Terrace, Paddington, London

Public Transport: Lancaster Gate and Paddington tube stations

Phone: +44 20 7479 6600

Internet: www.roseatehotels.com/london/roseatehouse

Email: info@theroyalpark.com

Afternoon Tea at The Goring



Indulge your royal fantasies with an afternoon tea at The Goring, just a few steps away from Buckingham Palace. This hotel has

been perfecting the art of afternoon tea for more than a century. So much so that it was presented with the British Tea Guild Council's

Top London Afternoon Tea Award. The five-star experience includes the option to take tea on The Terrace overlooking The Goring Gardens.

Photo: Teerapong Tanpanit/Shutterstock.com

Address: Beeston Place, Victoria, London

Public Transport: Victoria tube station

Phone: +44 20 7396 9000

Internet: www.thegoring.com

Email: afternoontea@thegoring.com

Afternoon Tea at The Rubens at the Palace Hotel



The Rubens at the Palace Hotel offers a quintessentially English afternoon tea with a view over the Royal Mews of Buckingham Palace. This elegant 4-star hotel serves fragrant traditional English tea, complemented with delicate finger sandwiches and selections of sweet treats.

Photo: Sebastian Coman Photography/unsplash.com

Address: 39 Buckingham Palace Road, London

Opening hours: Mon-Fri & Sun noon-5pm, Sat noon-6pm

Phone: +44 207 834 6600

Internet:

www.rubenshotel.com/dining-and-drinks/afternoon-tea

BARS & NIGHTLIFE



glazok90/Shutterstock.com

London's nightlife is one of the most vibrant and varied in the world, with everything from mega clubs to live music. And from trendy bars to traditional British pubs.

Spots in central London like Soho and Leicester Square attract visitors most nights of the week, but if it's the more trendy venues you're interested in why not try neighbourhoods like Hoxton and Shoreditch in East London, or Brixton and Clapham in South London.

Here's just a taster of what London has to offer on a night out, including quality pubs and bars, world-renowned clubs, live music venues and much more.

Ministry of Sound



Converted from an old bus station in the 90s, the Ministry of Sound is a legendary spot in London's clubbing scene, and it's an international brand, too. Located close to Elephant and Castle, south of Waterloo, the club boasts five rooms, four bars, a VIP lounge, a courtyard area and what's said to be the world's best sound system.

Photo: Anthony Mooney/Shutterstock.com

Address: 103 Gaunt Street, Elephant & Castle, London

Public Transport: Elephant & Castle tube station

Opening hours: Fri 10:30pm-6am, Sat 11pm-6am. Last entry at 4am

Phone: +44 20 7740 8600

Internet: www.ministryofsound.com

Email: info@ministryofsound.com

Vaulty Towers



Run by the creative minds behind The Vaults, Vaulty Towers is a bar that perfectly captures the whimsical essence of the experimental art space beneath. It's packed with curios like an exaggeratedly tall bar stool, or a table disguised as a secret tree house. Whimsy runs through the drink menu, too: negronis are served on tap, and there is a genuine creative touch to everything they do, down to a makeshift spinning wheel to determine your pick of drink if you're so inclined.

Photo: [astarot/Shutterstock.com](https://www.shutterstock.com)

Address: 34 Lower Marsh, Bishop's, London

Opening hours: Sun-Wed noon-11pm, Thu-Sat noon-midnight

Phone: +44 20 7928 9042

Internet: www.vaultytowers.london

More Info: Vaulty Towers is a cashless venue

Marksman Public House



Marksman Public House is an award-winning establishment in London's flourishing East End features a revamped 150-year-old pub, unmistakably modern yet layered with history, and an upstairs dining room where you can fully expect to be served one of the city's finest Sunday roasts.

Photo: [Picnote/Shutterstock.com](https://www.shutterstock.com)

Address: 254 Hackney Road, London
Opening hours: Wed & Thu 4pm-midnight, Fri noon-1am, Sat 11am-1am, Sun noon-11pm
Internet: www.marksmanpublichouse.com
Email: bookings@marksmanpublichouse.com

Mayor of Scaredy Cat Town



Sure, the concept of "insider-only" speakeasy is far from new, but we think this little place is worth seeking out. It's not just the satisfaction of being somewhere secret — Mayor of Scaredy Cat Town takes itself with a refreshingly healthy dose of irony, which shines through its "rules of engagement" (as point 2 reads, "The town is Scaredy Cat Town, not Cool Cats Town, the Mayor demands the highest standards of self deprecation"), all the while serving a great selection of inventive cocktails and finger foods; there's also a weekend brunch at 39€ a piece.

To get here, enter through The Breakfast Club (Spitalfields) and head straight for the Smeg fridge. Don't even think of leaving the same way you came in lest you blow their cover: there is a separate exit through the toilet.

Photo: Maksym Fesenko/Shutterstock.com
Address: 12-16 Artillery Lane, Spitalfields, London
Opening hours: Mon-Wed 5pm-11:30pm, Thu & Fri 5pm-midnight, Sat noon-midnight, Sun noon-10pm
Phone: +44 20 7078 9639
Internet: www.themayorofscaredycattown.com

The Four Quarters



The Four Quarters is a no-frills bar in Peckham with major nostalgia-factor packed full of retro arcade games. Each game is only

25 pence to play, so you can have them all, plus great vegetarian and vegan grub.

Photo: Atmosphere1/Shutterstock.com
Address: 187 Rye Lane, Peckham, London
Opening hours: Mon 5:30pm-11pm, Tue & Wed 5:30pm-1am, Thu 5:30pm-1:30am, Fri 5pm-2am, Sat 1pm-2am, Sun 3:30pm-11pm
Phone: +44 7943 366 002
Internet: www.fourquartersbar.co.uk

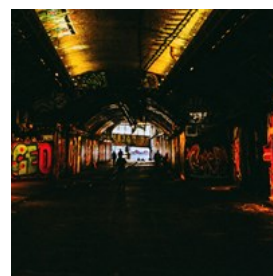
Ladies & Gents



What could easily have been a gimmick actually became one of Kentish Town's favourite watering holes: a former public toilet transformed into a below-ground bar. There is another one in Camden now — walk up or down Kentish Town Road if either is full.

Photo: Paul Adrian Emery/shutterstock
Address: 2 Highgate Road, Kentish Town, London
Opening hours: Thu 5pm-11:30pm, Fri & Sat 5pm-2am, Sun 5pm-11:30pm
Phone: +44 20 7813 7562
Internet: www.ladiesandgents.co

The Vaults



Housed deep below the ground (underneath London's Waterloo station) are The Vaults: a one-of-a-kind venue for experimental art in all its forms. Their calendar is updated regularly, and since anyone can rent a space to host an event (all rooms are for hire), the selection is expectedly both quirky and robust.

Photo: Artiom Vallat/unsplash
Address: Leake Street, Bishop's ward, London
Public Transport: Waterloo tube station via Exit Two

Phone: +44 20 7401 9603
Internet: www.thevaults.london

Soho



The energetic streets of Soho are the most popular nightlife destination. The neighbourhood still retains a somewhat

risqué vibe with bars, cafes and restaurants that cater to hip crowds of international creatives. Soho is also known as the centre of LGBTQA+ community, so don't miss out on all the gay and lesbian party spots in the area.

Soho is an absolute must-see, since it's so multifaceted. Dean, Frith, Beak, and Old Compton streets are lively around the clock, and long-running Ronnie Scott's Jazz Club can be found here. Shaftesbury Avenue attracts theatre-goers, while Carnaby, Oxford and Regent streets and the iconic Liberty's department store are there for your shopping needs. Music shops, small cafes and quaint bakeries are on every corner!

Photo: Mikel Parera/unsplash.com
Address: Soho, West End, London
Public Transport: Oxford Circus, Tottenham Court Road or Piccadilly Circus tube station
Internet: www.thisissoho.co.uk

The Argyll Arms



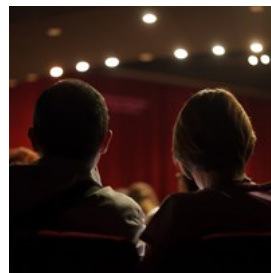
Known for its real ales, traditional pub grub and beautiful Victorian decor with mahogany panelling, The Argyll Arms is a slice of old London in the

bustling shopping district of Oxford Street. Completed in 1742, the Grade II listed pub is

named after the second Duke of Argyll and there is a rumour that a secret tunnel once connected the pub to the duke's mansion.

Photo: Syda Productions/Shutterstock.com
Address: 18 Argyll Street, London
Public Transport: Oxford Circus tube station
Opening hours: Daily noon-10pm
Phone: +44 20 7734 6117
Internet: www.nicholsonspubs.co.uk/restaurants/london/thea-rgyllarmsoxfordcircuslondon

The Top Secret Comedy Club



In keeping with its name, the Top Secret Comedy Club is perhaps London's best kept secret when it comes to comedy entertainment. But watch

out — it's unlikely to stay this way for long! Dishing out the jests, the quips and the witticisms every night of the week are a range of both well-established and up-and-coming comedians. At prices accessible beyond belief, you can find yourself spending the evening (and only a pound or two) at one of the city's most interesting comedy venues.

Photo: aerogondo2 / Shutterstock.com
Address: 170 Drury Lane, London
Opening hours: Mon-Fri 6pm-11pm, Sat 2pm-11pm, Sun 2pm-10:30pm
Phone: +44 7956 539 784
Tickets: Prices vary depending on event. Sometimes the entry is free
Internet: www.thetopsecretcomedyclub.co.uk
Email: info@thetopsecretcomedyclub.co.uk

Ronnie Scott's Jazz Club



Ronnie Scott's Jazz Club is perhaps the capital's most iconic jazz venue. Up and running since 1959, Ronnie Scott's has had the pleasure of

hosting some of the world's most renowned musicians. Whether it's the weekly jam sessions in the upstairs cocktail bar or any of the top notch live bands playing in the main club, it is guaranteed you will enjoy the evening in style in one of the coolest and classiest places in London.

Photo: Freedom Studio/Shutterstock

Address: 47 Frith Street, Soho, London

Opening hours: Open daily. See website for exact opening hours

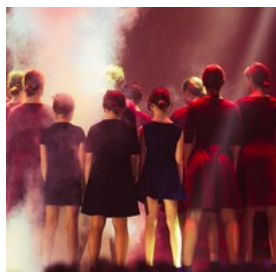
Phone: +44 20 7439 0747

Tickets: Prices vary depending on event.

Internet: www.ronniescotts.co.uk

More Info: Booking a spot in advance is highly recommended

The King's Head Theatre Pub



A cheaper and more authentic alternative to the glamour of London's West End can be found hidden away upstairs or downstairs in many pubs

across the capital. The King's Head in Islington was the first theatre pub to open since Shakespearean times. And if you're willing to leave the city centre for an evening, The King's Head offers theatre, musicals and stand-up comedy. This is where a handful of world-renowned actors started off before being propelled to fame and where many a successful West End production was born. Make sure to have a look at the shows on their website and see if anything catches your eye before booking tickets.

Photo: Shymanska Yunnona / Shutterstock.com

Address: 115 Upper Street, Islington, London

Opening hours: Daily noon-11pm. Kitchen open until 9pm

Phone: +44 0207 226 8561

Tickets: Prices vary depending on event

Internet: www.kingsheadtheatrepub.co.uk

Email: kingsheadtheatre@youngs.co.uk

The Atlas Pub



The Atlas Pub is a warm and relaxing venue, where you'll find stylish wood panelling, fresh flowers and a brick fireplace. It also has a

fine selection of wines and ales, a menu full of delicious and diverse dishes, and is the location of The London Wine Academy's popular wine workshops.

Photo: marino bocelli/Shutterstock.com

Address: 16 Seagrave Road, Fulham, London

Public Transport: West Brompton station

Opening hours: Mon-Fri 4pm-11pm, Sat noon-11pm, Sun noon-10:30pm

Phone: +44 20 7385 9129

Internet: www.theatlaspub.co.uk

Email: reservations@theatlaspub.com

Gordon's Wine Bar



Thought to be London's oldest wine bar — established in 1890 — Gordon's is a wonderfully atmospheric venue that feels like something from

another era. This candlelit cellar-bar serves a wide range of wines, sherries and ports from the barrel, as well as big hearty meals. Always busy, you're advised to arrive around 4pm if you want to bag a table.

Photo: Igor Normann/shutterstock

Address: 47 Villiers Street, London

Public Transport: Charing Cross and Embankment tube stations

Opening hours: Mon-Sat 11am-11pm, Sun noon-10pm

Phone: +44 20 7930 1408

Internet: www.gordonswinebar.com

Email: info@gordonswinebar.com

The Roxy



Below the busy streets of London's West End lies informal basement bar The Roxy. Popular with everyone from students to the after-work crowd, The Roxy has six weekly club nights pumping out popular, electronic and alternative music. Happy hour kicks off at 5pm and ends at 8.30pm.

Photo: Jacob Lund/Shutterstock.com

Address: 3-5 Rathbone Place Marylebone, London

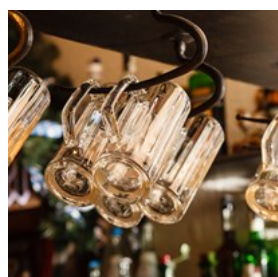
Public Transport: Tottenham Court Road tube station

Opening hours: Mon 10pm-3am, Tue-Thu 5pm-3am, Fri & Sat 5pm-3:30am, Sun closed

Phone: +44 20 7255 1098

Internet: www.theroxy.co.uk

The Prince Alfred



Established in 1863, The Prince Alfred has retained much of its period features, including the original Victorian snugs — each with its own door onto the street and separated from each other by a wooden partition with a small access door. The PA, as it is known locally, also serves food in the adjoining Formosa dining room, and is located close to the picturesque waterside of Little Venice.

Photo: Shebeko/Shutterstock.com

Address: 5a Formosa Street, London

Public Transport: Warwick Avenue tube station

Opening hours: Mon-Fri noon-11pm, Sat 10am-11pm, Sun

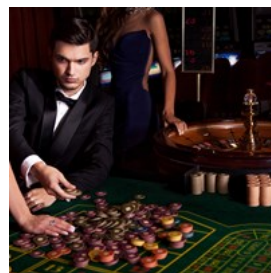
noon-10:30pm

Phone: +44 20 7286 3287

Internet: www.theprincealfred.com

Email: princealfred@youngs.co.uk

The Hippodrome Casino



Just like Leicester Square, where it is located, the five-floor Hippodrome Casino is glitzy and vibrant. Aside from the gaming areas, there are live shows, six bars, a restaurant, two lounges and an outdoor smoking and cigar bar. The heart of it all is the Heliot bar on the first floor balcony, serving classic cocktails with a Hippodrome twist.

Photo: AS Inc/Shutterstock.com

Address: Leicester Square, London

Public Transport: Leicester Square tube station

Opening hours: 24/7

Phone: +44 207 769 8888

Internet: www.hippodromecasino.com

Email: info@hippodromecasino.com

SHOPPING



Maridav/shutterstock

Shopping in London is one of the most popular pastimes for visitors and locals alike. And it's no wonder given the huge range of shopping destinations across the capital, from high-end luxury boutiques and huge department stores to lively markets and vintage pop-ups.

The key is to find the right shopping area for you, be it the bright lights and big brands of the West End, the quirky and outrageous fashion of Camden or the smart suits in Savile Row. Here are just a few of London's top shopping destinations well worth a visit.

Oxford Street



Oxford Street is the ultimate London shopping destination, packed with high-street fashion, international brands, technology, homewear and much, much more. No wonder its streets are always crowded with bag-laden shoppers! Favourite destinations include a huge branch of Topshop, plus iconic department stores such as Selfridges, John Lewis, House of Fraser and Marks & Spencer.

Photo: [alice-photo/Shutterstock.com](#)

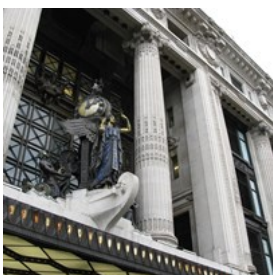
Address: Oxford Street, London

Public Transport: Oxford Circus, Tottenham Court Road,

Bond Street and Marble Arch Tube stations

Internet: [www.oxfordstreet.co.uk](#)

Selfridges



Selfridges' flagship London store is one of the world's finest department stores. It is six floors of fabulous fashion, pop-up concessions, electrical gadgets, stylish homeware and tasty food. But it's far more than just a shopping destination. It's also a social hub with events, bars, restaurants, cafes, art exhibitions and the odd rooftop party.

Photo: [inavanhateren/Shutterstock.com](#)

Address: 400 Oxford Street, London

Public Transport: Bond Street and Marble Arch tube stations

Opening hours: Mon-Sat 10am-9pm, Sun 11:30am-6pm

Phone: +44 207 160 6222

Internet: [www.selfridges.com](#)

Email: customerservices@selfridges.com

Portobello Road Market



Head to Notting Hill on a Saturday, when the Portobello Road Market (claimed by some to be "the world's most famous market") is in full swing. The market is known for its antiques and collectables, but there's huge variety that goes beyond, ranging from second-hand clothing to fruit & veg, plus street food. The market closes on Sundays, but shops and restaurants are mostly open all days of the week.

Photo: [Alexey Fedorenko/Shutterstock.com](#)

Address: Portobello Road, London

Internet: [www.portobelloroad.co.uk/the-market](#)

We Built This City



This souvenir shop with a difference stays true to its self-asserted mission of 'revolutionising London souvenirs' by packing its compact Soho outlet in 57 Carnaby Street full of non-banal pieces designed by local artists. There's something for everyone: music- and art-lovers, as well as those with a penchant for a particular area of the city.

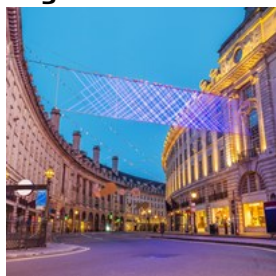
Photo: [LightField Studios/Shutterstock.com](#)

Address: 57 Carnaby Street, Soho, London

Phone: +44 20 3642 9650

Internet: [www.webuilt-thiscity.com](#)

Regent Street



With its beautiful curved facades, listed architecture and elegant hotels, Regent Street is a cultural destination as well as a shopping

hotspot. Top brands such as Liberty, Apple and Hamleys congregate here, alongside what is the largest Burberry store in the world.

Photo: Zoltan Gabor/Shutterstock.com

Address: Regent Street, London

Public Transport: Oxford Circus and Piccadilly Circus tube stations

Internet: www.regentstreetonline.com

Email: info@regentstreetonline.com

Liberty



Instantly recognisable by its iconic mock-Tudor frontage, Liberty is a lavish design emporium located just off Regent Street. It first opened its doors in 1875, and was later crowned by Oscar Wilde 'the chosen resort of the artistic shopper'. Today it's best known for its elaborate fabric patterns, top-notch fashion, jewellery, beauty, furniture, toys, oriental rugs and much more.

Photo: Clare Louise Jackson/shutterstock

Address: Regent Street, London

Public Transport: Oxford Circus tube station

Opening hours: Mon-Sat 10am-8pm, Sun noon-6pm

Phone: +44 20 3893 3062

Internet: www.liberty.co.uk

Email: customerservices@libertylondon.com

More Info: The main entrance is located on Great Marlborough Street

Camden Lock Market



Located next to the picturesque canal, the Camden Lock Market is a must if you're into quirky, alternative and unique gifts, fashion and crafts.

Comprising a mix of shops and stalls, the buzzing market has been attracting crowds of visitors since 1972. While you're in the area, make sure you visit the nearby Stables Market and Camden Market (formerly Buck Street Market).

Photo: Steve Barker/unsplash

Address: 54-56 Camden Lock Place, Chalk Farm Road, London

Public Transport: Camden Town and Chalk Farm tube stations

Opening hours: Daily 10am-6pm

Phone: +44 20 3763 9900

Internet: www.camdenmarket.com

Email: info@camdenmarket.com

Covent Garden & Seven Dials



Covent Garden is famous for its street entertainment and covered markets: Apple Market, Jubilee Market and East Colonnade Market.

Everything from British-made arts and crafts to jewellery and antiques can be found here. The area has many permanent shops too. From the ever-popular Disney Store to travel book shop Stanfords. Close by are two other unique London shopping destinations, Neal Street and Covent Garden's 'village' Seven Dials, a small agglomeration of streets packed with fashion boutiques, vintage shops, jewellers and design furniture stores.

Photo: David Sury/unsplash.com

Address: Covent Garden, London

Public Transport: Covent Garden tube station
Internet: www.coventgarden.london

Knightsbridge



Knightsbridge and the surrounding areas of Chelsea and South Kensington are known for their high-end fashion and prestigious brands.

On Sloane Street, you'll find Prada, Gucci, Giorgio Armani, Dolce et Gabbana, Fendi and many more top labels. The road intersects to the north with Brompton Road, home to the likes of Harrods and Harvey Nichols, and to the south with King's Road, where punk and other counterculture movements flourished in the 1960s. Today this is where you'll find a Vivienne Westwood shop and a Peter Jones department store.

Photo: JJFarq/shutterstock
Address: Knightsbridge, London
Public Transport: Knightsbridge, Sloane Square and South Kensington tube stations
Internet: www.knightsbridge-estate.com

Harrods



Famous around the world, Harrods is a gold-and-green beacon in London's shopping scene. Inside the stunning store you'll find everything from homewares and kitchen essentials to books and beauty products. But most people make a beeline for the Harrods-branded gifts, fashion aisles and food hall — an ornate treasure trove of foodie delicacies and sweet treats.

Photo: Luis Coronel/unsplash.com
Address: 87-135 Brompton Road, Knightsbridge
Public Transport: Knightsbridge tube station

Opening hours: Mon-Thu 11am-7pm, Fri-Sat 11am-8pm, Sun 11:30am-6pm
Phone: +44 20 7730 1234
Internet: www.harrods.com
Email: help@harrods.com

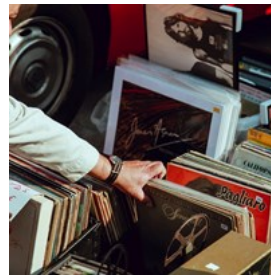
Borough Market



London's Borough Market is unsurprisingly popular — it's been gaining momentum since the 12th century, after all — but those who arrive for an early lunch can take advantage of this London fixture's ample offering of street food from all over the world, followed by a stroll through the stalls vending local produce.

Photo: I Wei Huang/Shutterstock.com
Address: 8 Southwark Street, London
Opening hours: Mon-Thu 10am-5pm, Fri 10am-6pm, Sat 8am-5pm, Sun 10am-2pm
Internet: boroughmarket.org.uk

Greenwich Market



Packed with unique arts and crafts, Greenwich Market is the place to go for one-off, unique gifts and souvenirs. Browse handmade jewellery, natural beauty products, children's toys or antiques — you are sure to find something new every day. There are also permanent shops selling art, clothing and accessories, plus a good range of food stalls serving up delicious cuisine from around the world.

Photo: Clem Onojeghuo/unsplash.com
Address: Greenwich High Road, London
Public Transport: Cutty Sark and Greenwich stations
Opening hours: Daily 10am-5:30pm
Phone: +44 020 8269 5096
Tickets: Free entry

Internet: www.greenwichmarketlondon.com
Email: hello@greenwichmarketlondon.com
More Info: The market can also be accessed from College Approach

Savile Row



A street in Mayfair, Savile Row has been synonymous with traditional bespoke tailoring since 1803. It remains a key player in the London fashion scene thanks to cutting-edge designers such as Richard James and Oswald Boateng. For shirts, ties, hats and other accessories head for nearby Jermyn Street.

Photo: [Pressmaster/Shutterstock.com](https://www.shutterstock.com/user/pressmaster)
Address: Saville Row, Mayfair, London

Mayfair



Mayfair is home to some of the world's most prestigious brands and luxury hotels, and is London's most exclusive shopping destination.

Along Mount Street you'll find many luxury fashion and beauty brands, art and antiques dealers, as well as top restaurants. Other Mayfair retail residents include Marc Jacobs, Christian Louboutin, Jenny Packham, Balenciaga, Purdey and William & Son.

Photo: [Alexey Fedorenko/Shutterstock.com](https://www.shutterstock.com/user/alexey-fedorenko)
Address: Mayfair, London
Public Transport: Bond Street, Marble Arch and Green Park tube stations

Westfield London



Westfield London is a super-sized shopping and leisure destination in West London's Shepherd's Bush district. Inside this stunningly designed mall you'll find more than 265 luxury and high-street shops, from Debenhams to Dior (located inside luxury brand area The Village). There are also plenty of restaurants and bars to refuel at along the Southern Terrace, plus a 14-screen cinema, gym, spa, library and a packed programme of special events in the central Atrium.

Photo: [Syda Productions/Shutterstock.com](https://www.shutterstock.com/user/syda-productions)
Address: Ariel Way, London
Public Transport: Shepherd's Bush and Wood Lane tube stations
Opening hours: Mon-Sat 10am-9pm, Sun noon-6pm
Phone: +44 203 371 2300

Westfield Stratford City



The sister mall to the pioneering Westfield London, Westfield Stratford City has revitalised East London with its great brands, top restaurants and entertainment venues. Explore 250 shops and 70 dining spots, catch a film at the cinema, spend time with friends at the All Star Lanes bowling alley and try your luck at the grand casino. While you're there, look out for great views over the stunning Queen Elizabeth Olympic Park nearby.

Photo: [Monkey Business Images/Shutterstock.com](https://www.shutterstock.com/user/monkey-business-images)
Address: Montfichet Road, Queen Elizabeth Olympic Park, London
Public Transport: Stratford tube station
Opening hours: Mon-Sat 10am-9pm, Sun noon-6pm

Phone: +44 208 221 7300

Harvey Nichols Knightsbridge



Harvey Nichols, or Harvey Nicks as it's known locally, is a favourite among London's fashionistas. Its flagship Knightsbridge store

opened in the 1880s and today boasts a massive eight floors of fashion, beauty and lifestyle collections. The fifth floor is given over to the stylish Fifth Floor Restaurant, Cafe and Bar, plus a food market and wine shop.

Photo: David Lezcano/unsplash.com

Address: 109-125 Knightsbridge, London

Public Transport: Knightsbridge and Hyde Park Corner tube stations

Opening hours: Mon-Sat 10am-8pm, Sun 11:30am-6pm

Phone: +44 20 7235 5000

Internet: www.harveynichols.com/store/knightsbridge

Email: contact.knightsbridge@harveynichols.com

TOURIST INFORMATION



ESB Professional/shutterstock

Passport & Visa



Starting from January 8, 2025, the United Kingdom has introduced an Electronic Travel Authorisation (ETA) requirement for

visa-exempt travellers. Initially, this applies to citizens from countries such as the United States, Canada, Australia, Japan, and others. From April 2, 2025, this requirement will extend to European Union (EU) and European Economic Area (EEA) citizens, including those from Iceland, Liechtenstein, Norway, and Switzerland.

The ETA permits short-term visits of up to six months for tourism. Travellers must apply for the ETA online or via a mobile app before their trip. The process involves providing personal details, passport information, and answering a series of questions. The ETA costs £10 and is valid for two years or until the passport expires, whichever comes first. Most applications are processed within three working days, but it's advisable to apply well in advance of travel.

However, travellers planning to work or study in the UK for more than six months will need to obtain the appropriate visa. It is essential to consult the UK Government's official website to understand the specific requirements and ensure a smooth journey.

Please note that the ETA does not guarantee entry into the UK. Border officials retain the authority to grant or deny admission upon arrival.

Photo: maramade/shutterstock

Internet: www.gov.uk/uk-border-control

Best Time to Visit



London is graced with a mild climate and, as such, can be visited at any time of the year. However, a few things need to be considered. Most of the royal palaces and residences, like the State Rooms at Buckingham Palace, are only open to the public during the summer months. Many of the city's most important festivals, like the British Summer Time Music Festival, also take place during this time. Late June to mid July is also when some of the best sales are on in shops around the capital.

Spring is also a good season for a visit, since the weather is generally good and finding accommodation is both easier and cheaper (high season in London means a lot of tourists). And if you're not too bothered about the grey weather, then low season (January and February) can be a good option too, when there are fewer tourists and prices are lower.

Photo: Daniil Korbut/unsplash

London Heathrow Airport (LHR)



London Heathrow Airport is one of the busiest airports in the world, with five terminals. There are various ways to travel from Heathrow Airport to your destination.

The cheapest and most versatile way of getting to and from the city centre to Heathrow is by tube. The fastest way is the dedicated airport train — the Heathrow Express — which takes just 15 minutes from Heathrow to Paddington

Station and runs every 15 minutes.

Photo: John Cameron/unsplash

Address: Heathrow Airport, Hounslow, Middlesex

Public Transport: London Heathrow Airport Train Station

Phone: +44 844 335 1801

Internet: www.heathrow.com

London Gatwick Airport (LGW)



London Gatwick Airport is the second largest airport in the UK (Heathrow Airport is the largest), with two terminals: North and South.

The fastest route from the airport into Central London is via the Gatwick Express, with trains departing every 15 minutes. The non-stop journey to Victoria Station takes 30 minutes. Try the trip planner on the official website to see which of the many transportation options works best for you.

Photo: holakarlos/unsplash

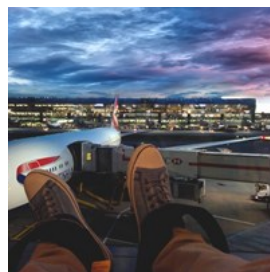
Address: Gatwick Airport, West Sussex

Public Transport: London Gatwick Airport Train Station

Phone: +44 844 892 0322

Internet: www.gatwickairport.com

London Stansted Airport (STN)



London Stansted Airport is the third busiest airport in the UK, and many low-cost airlines serving Europe and the Mediterranean operate from here.

On the Stansted Express you can reach Liverpool Street station in 47 minutes. Trains run every 15 minutes.

You can see the full up-to-date list of transportation options on the official website.

Photo: Sohel Patel/pexels

Address: Stansted Airport, Essex CM24 1RW

Public Transport: Stansted Airport Train Station

Phone: +44 808 169 7030

Internet: www.stanstedairport.com

London Luton Airport (LTN)



London Luton Airport is located just 56km north-west of Central London, and is a popular base for low-cost airlines.

A regular shuttle bus

transports passengers from the airport to the nearest station, Luton Airport Parkway, which takes about 10 minutes. From the station you can catch an East Midlands Trains or First Capital Connect service into Central London taking somewhere between 21 and 25 minutes. Other options include the easyBus express service, the Green Line 757 coach service to Victoria Coach Station or Terravision coaches to Victoria Coach Station. Each transport service stops at different destinations en route. A metered taxi ride to or from Central London costs around £80.

Photo: Terence Burke/unsplash

Address: London Luton Airport, Luton, Bedfordshire

Public Transport: Luton Airport Parkway

Phone: +44 1582 405 100

Internet: www.london-luton.co.uk

Airport — London City (LCY)



London City Airport is a single runway airport located 9.5km east of Central London, and serving mainly short-haul and business flights. The airport is on the Docklands Light Railway, which connects to London's Tube network at Canning Town, Stratford and Bank and uses the same price structure. Buses serve the airport too, with numbers 473 and 474 providing a connection to other East London destinations. You can also take a cab from the taxi rank outside the airport.

Photo: Chris Lawrence Travel/shutterstock

Address: London City Airport, Hartmann Road, London

Public Transport: London City Airport DLR Station

Phone: +44 20 7646 0000

Internet: www.londoncityairport.com

Public Transport — Bus



London's bus network stretches right across the capital and provides a frequent and accessible service. If you're using an Oyster card, all you have

to do is 'touch in' when you get on the tram.

Seven-day, one-month and annual bus passes are available. Cash is no longer accepted in buses and trams. You might be able to pay by tapping your contactless bank payment card.

To navigate your way around the network, pick up a Central London Bus Guide from travel information centres at larger Tube stations or use Transport for London's online Journey Planner. A reduced service of night buses operates throughout the night and the early hours of the morning. Most late-night routes will stop at Trafalgar Square. Various concessions

are available for children, students, the elderly and disabled travellers.

Photo: Thomas Konings/unsplash

Phone: +44 343 222 1234

Internet: www.tfl.gov.uk

More Info: tfl.gov.uk/fares/free-and-discounted-travel

Public Transport – the Tube



There are 11 Underground or 'Tube' lines serving Greater London, which connect at various points to the Docklands Light Railway (DLR) and local rail network. The Tube usually operates from 5am to midnight from Monday to Saturday, with a reduced service on Sunday. Plan your route by picking up a free Tube map from any Underground station, or using Transport for London's online Journey Planner. Fares vary depending on which of London's six travel 'zones' you travel through, though they are considerably cheaper with an Oyster card than buying paper tickets. Various concessions are available for children, students, the elderly and disabled travellers.

Photo: Will H McMahan/unsplash

Phone: +44 343 222 1234

Internet: www.tfl.gov.uk

Public Transport – Docklands Light Railway



The Docklands Light Railway (DLR) serves East London and connects with the Tube network at Bank, Tower Gateway (Tower Hill), Shadwell, Stratford, Bow, Heron Quays, Canning Town and Canary Wharf. It also connects to the Emirates Air Line cable car at Royal Victoria.

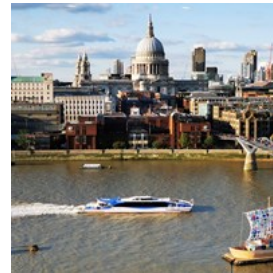
Fares are the same as on the Tube, and the DLR runs from 5:30am to 12:30am Monday to Saturday and from 7am to 11:30pm on Sunday. Both Oyster card and Travelcard holders can use the DLR.

Photo: William Perugini/shutterstock

Phone: +44 343 222 1234

Internet: www.tfl.gov.uk

Public Transport – Thames River Bus



Travel with ease along the Thames on board a river bus. There are six different routes that all stop at destinations along the riverbank between Putney and Woolwich Arsenal. Popular services include the Thames Clippers route between Hilton London Docklands Riverside and Canary Wharf, the Tate-to-Tate boatride between Tate Britain and Tate Modern, and the journey between London Eye and Greenwich village. Depending on the service you'll be able to buy your ticket either before boarding or on board. Discounts are available when using Travelcards and Oyster cards.

Photo: María Is/unsplash

Phone: +44 343 222 1234

Internet: www.tfl.gov.uk/modes/river/about-river-bus

Public Transport – Local Trains



As well as the Underground, London has its own local train network, which connects to the Tube at many points. The main train operators serving London are Silverlink, First Capital Connect, SouthEastern Railway, Southern Railway, London Overground and

Greater Anglia. These local lines are, in turn, connected to the national rail network and the Eurostar. You can use your Oyster card on all trains operating within Zones 1-9, with the exception of Heathrow Express and a few other select services. Several different railcards are available too, providing discount fares to their holders.

Photo: Roman Fox/unsplash
Phone: +44 343 222 1234
Internet: www.tfl.gov.uk/maps/track

Public Transport – Trams



London's tram network, Tramlink, was introduced in the year 2000 and it runs in specific parts of South London — between Wimbledon, Croydon, Beckenham and New Addington. Trams run approximately every seven minutes to New Addington and every 10 minutes to Wimbledon, Elmers End and Beckenham Junction during the day from Monday to Saturday. If you're using an Oyster card, all you have to do is 'touch in' when you get on the tram. Seven-day, one-month and annual bus passes are available. Cash is no longer accepted in buses and trams. You can pay by tapping your contactless bank payment card.

Photo: FedericoCangiano/shutterstock
Phone: +44 343 222 1234
Internet: www.tfl.gov.uk

Public Transport – Cycle Hire Scheme

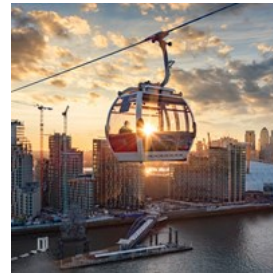


Hop on a 'Boris bike' and zip around London using the city's public bike-sharing scheme. Named after London's former mayor Boris

Johnson, the popular red bikes can be picked up at over 550 bicycle docking stations across London, which means you're never far away from one. After you've paid your registration fee (from £2), you can hire a bike for a day. The bikes are free to use for the first 30 minutes, after which the price increases by £2 every extra 30 minutes. When you've finished your journey, simply return the bike to your nearest docking station – you can find out where that is using the Santander Cycles app.

Photo: Gonzalo Facello/unsplash
Phone: +44 343 222 6666
Internet: www.tfl.gov.uk/modes/cycling/santander-cycles

Public Transport – IFS Cloud Cable Car



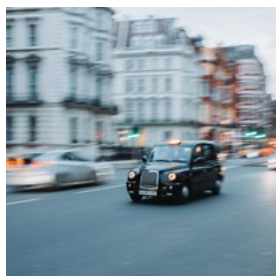
Cross the Thames in style on board the IFS Cloud Cable Car, London's cable car connecting Greenwich Peninsula and the Royal Docks. As well as taking you across the river in less than 10 minutes, it provides an amazing bird's eye view of London and the Thames.

The fare is £4 using an Oyster card or Contactless card. Multi-journey boarding passes (£17 for 10 single trips) and private cabin packages are also available.

After 7pm the line runs at half the speed, giving you more time to enjoy the view and relax.

Photo: Sven Hansche/shutterstock
Address: 27 Western Gateway, London
Phone: +44 343 222 1234
Internet: tfl.gov.uk/modes/london-cable-car

Taxi



Taking a ride in one of London's iconic black cabs makes for a very comfortable and spacious ride. Hail a cab in the street or pick one up at a taxi rank. Your journey is calculated using a meter, with a minimum charge of £3.20. Watch out though, because the price can go up pretty quickly and the roads in central London are often packed with cars. London also has many private vehicles for hire, as well as minicabs: these are unmetered so check the fare when booking. To find a local, reputable firm download Transport for London's free CabWise app or check the Hailo app to find a nearby black cab.

Uber, Bolt, Ola, Via, Wheely, xoox, Free Now, Gett and Addison Lee rideshare apps all operate in London.

Photo: Bruno Martins/unsplash

Phone: +44 343 222 4000

Internet: www.tfl.gov.uk/modes/taxis-and-minicabs/taxi-fares

Post

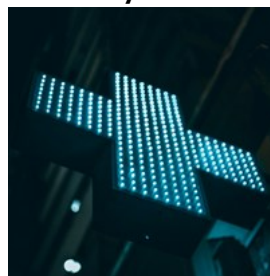


Postage stamps are available across London at post offices, newsagents and supermarkets. To post a package or small souvenirs, drop into a post office — you can find your nearest branch on their official website. Post offices are generally open Monday-Friday from 9 am to 5:30 pm and Saturday from 9 am to 12:30 pm.

Photo: Lina Kivaka/pexels

Internet: www.postoffice.co.uk

Pharmacy



Whether you need to buy over-the-counter medication or collect a prescription, there are plenty of pharmacies all over the capital. Boots and Superdrug are two big chemist chains. You will also find pharmaceutical products at some of the larger supermarket branches.

Photo: Vladislav Bychkov/unsplash

Address: Boots London Piccadilly Circus, 44-46 Regent St, London

Public Transport: Piccadilly Circus tube station

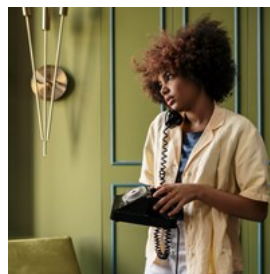
Opening hours: Mon-Thu 8am-11pm, Fri 8am-midnight, Sat 9am-midnight, Sun noon-6pm

Phone: +44 207 7346 126

Internet:

www.boots.com/stores/1000-london-piccadilly-circus-w1b-5ra

Telephone



The international dialling code for the UK is +44 or 0044, which replaces the first 'zero' of the phone number. So, for example, to call the number 020 7946 0000 from abroad you would dial +44 20 7946 0000.

The area codes for London are (020) 7, (020) 8 and (020) 3. If you're dialling a London number from another fixed phone line within Greater London you don't need to dial the '020' before the number, just the rest of the number starting with 7, 8 or 3.

Photo: cottonbro/pexels

Electricity



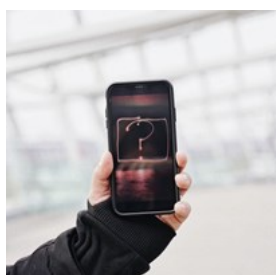
Electrical appliances are connected to the UK mains supply using a three-pin plug known as plug type G. The sockets come with on-and-off

switches, unlike in many other countries.

The average voltage of a UK power socket is 230V or slightly higher, so check the voltage of your device before plugging it in. Voltage adaptors and convertors are available from London airports and high-street electrical chains such as Argos or Curry's.

Photo: Idyshah/pixabay

Frequently Asked Questions about London (FAQs)



FAQ - What is the best way to explore London? London is an extremely walkable city and most locals rely on public transportation to get

around. As a tourist, you have a lot more to see when you are travelling overground, so consider picking busses and trams over the Tube just for that reason. Seeing London from the river is a great opportunity to understand the city's geography and get away from the crowds. Remember to carry comfortable walking shoes, some sort of rain protection and don't forget about sun cream. An Oyster card is your best tool for shrinking distances in this huge city, so get one as soon as possible.

- How many days in London is enough?

While you can see most of the main bucket list sights in London in a couple of days, spending at

least 3-4 days in London is the best way to do this incredibly diverse city justice. You'll have enough time to get acquainted with the city and go beyond the most obvious sight. Save a day to do something that speaks to you and your interests in particular.

- Where can I get an Oyster card?

An Oyster card is an essential tool for every Londoner. You can buy one at the Oyster ticket stops in many newsagents, at all Tube, London Overground, most TfL Rail and some DLR stations. Visitor Centres sell them as well. The card Oyster itself costs £5 and you can recharge it in all the same places where you can buy them, plus through the TfL Oyster and contactless app.

- What's the tipping culture in London?

It is customary to leave 10-15% of the bill when eating out. Many restaurants will add a 12.5% service charge, especially if you're dining out with a large group. Check your bill if you don't want to tip twice. You can also ask for the service charge to be removed if you found the service to be completely unacceptable.

- Is London a safe city?

As most big cities, London does have a higher crime rate. According to the Economists Safe Cities Index, London is the 15th safest city in the world (tied with San Francisco).

- Is it safe to walk around London at night?

London streets at night are generally safe, but do remember that public transport doesn't run all night — you might be in for a very long walk to your hotel or a potentially costly cab ride.

- Where is the best place to stay in London?

London has many neighbourhoods to choose from, so spend some time researching what personalities each one has. Price is another important consideration, of course.

Brixton is a great residential area, known for its diversity, shops and street markets. Quite hip, but that also means it can get loud. Mayfair is right next to Hyde Park. Park yourself here for old British architecture and cute boutiques. The prices are somewhat high and Mayfair doesn't have the best airport connections. Shoreditch is a hipster paradise with excellent coffee shop culture — great for digital nomads. Shoreditch is not the most polished neighbourhood, though. Almost all neighbourhoods in London are very safe, so don't make that your main concern. Nightlife areas like Camden, West End and Deptford can turn a bit rowdy and loud at night, but you'll be in the middle of the action.

- Is London really always rainy and grey?

People tend to exaggerate. London does have decent weather, with full on sunny days. The best time to visit to avoid crowds and stay dry is early summer or early fall. Bring a jacket for the nights, even in the summer.

- What should I pack for my trip to London?

London is great for shopping, so don't worry too much about forgetting things at home. To stay comfortable, you'll definitely need a pair of good walking shoes. A water-resistant jacket won't hurt either. And do bring your favourite going out outfit for the weekend!

Photo: Olena Bohovyk/pexels

Population

9.4 million (2022, estimated)

Currency

British pound, £1 = 100 pence

Opening hours

Typical shopping hours are Monday to Saturday from 9 am to 5:30 pm. Many department stores stay open until 6pm, some until 7 pm or even 8 pm once a week, usually on Wednesdays or Thursdays. Larger shops are often open 10am–6pm on Sundays.

Internet

www.cityoflondon.gov.uk/things-to-do/city-information-centre

Newspapers

The Times – www.thetimes.co.uk

The Telegraph – www.telegraph.co.uk

The Guardian – www.theguardian.com

Daily Mail – www.dailymail.co.uk

The Independent – www.independent.co.uk

London Evening Standard – www.standard.co.uk

Emergency numbers

999 or 112

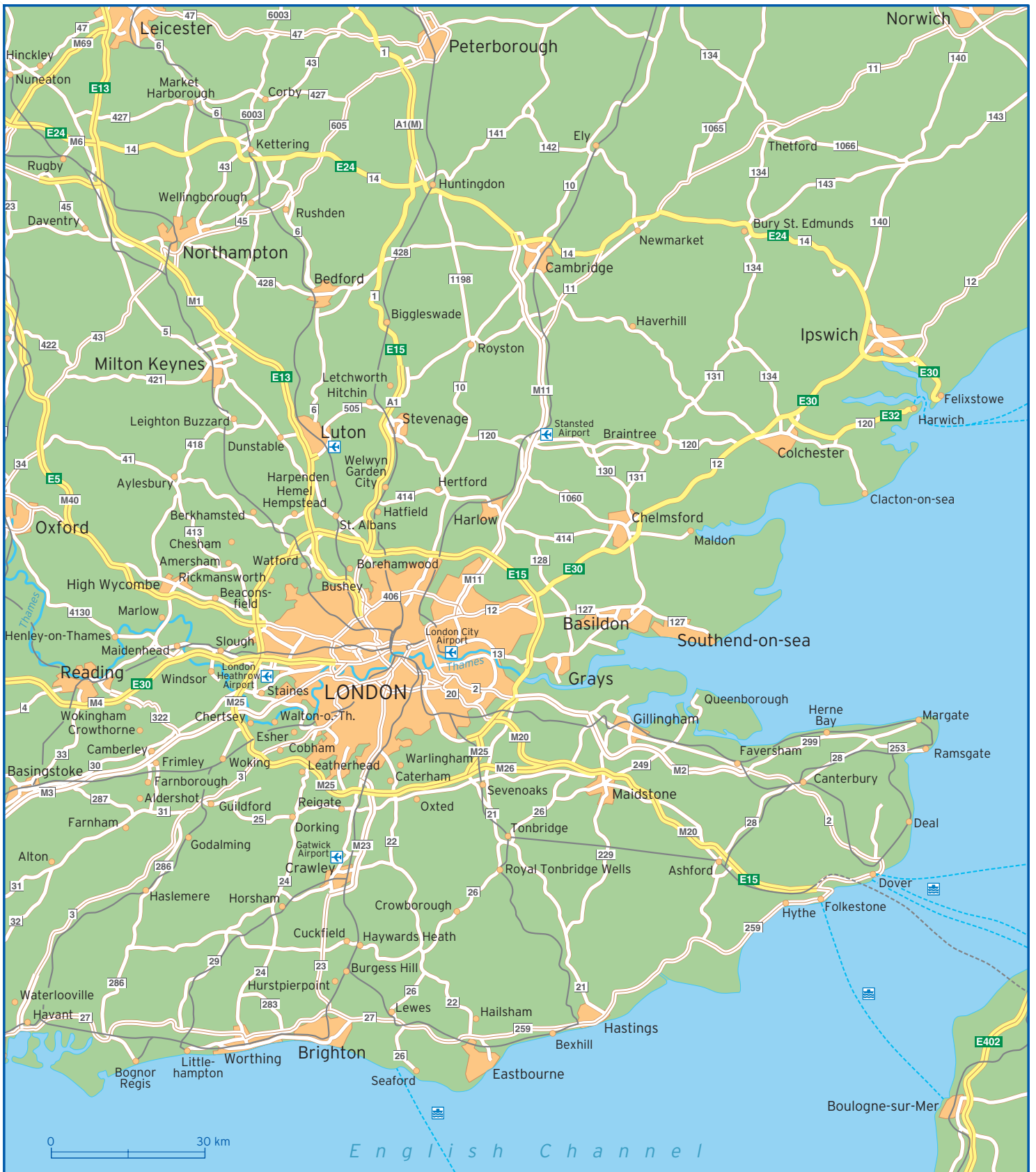
Tourist information

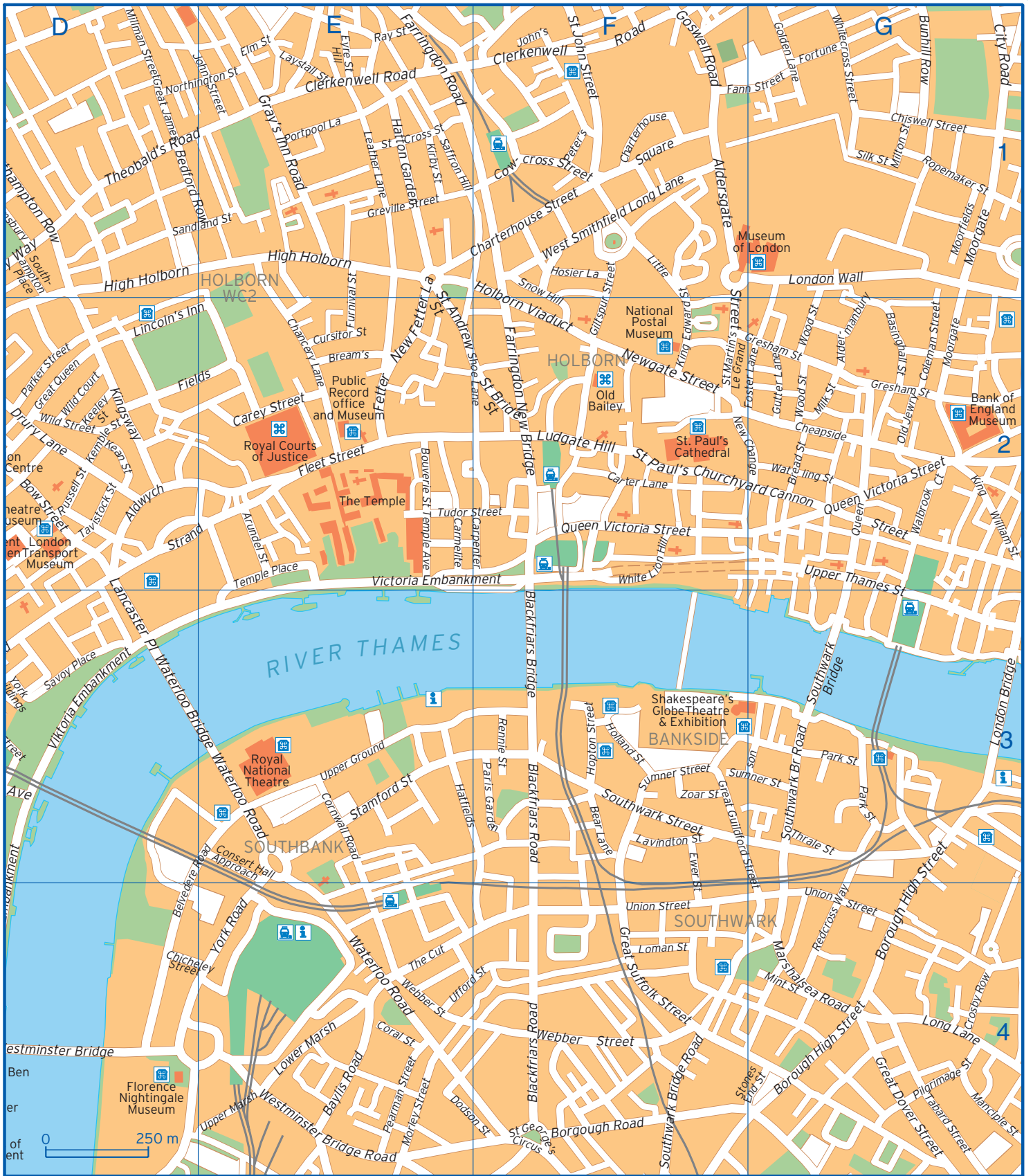
City of London Information Centre

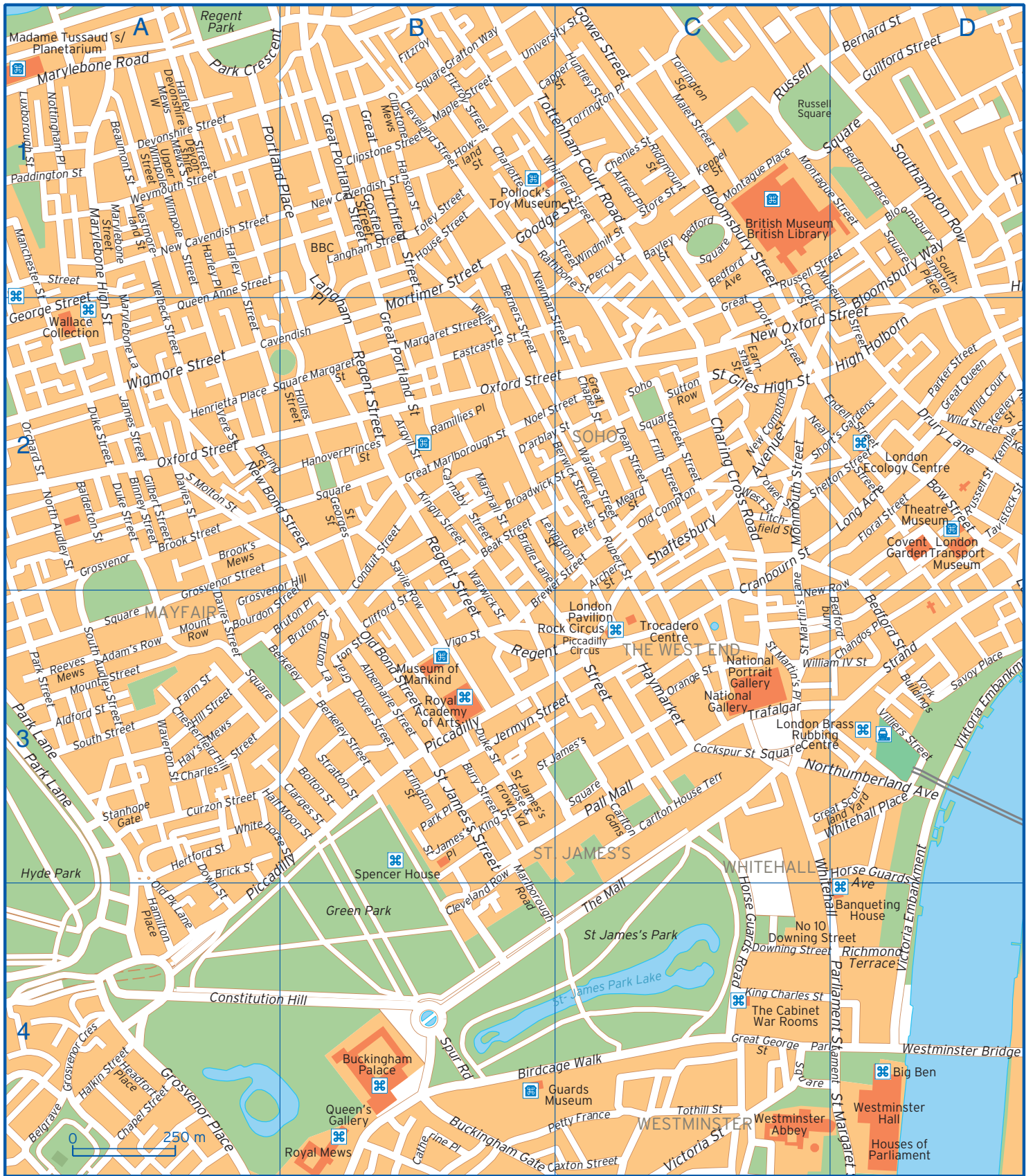
St Paul's Churchyard, London

+44 20 7332 3456

Opening hours: Mon–Sat 9:30am–5:30pm, Sun 10am–4pm







Adam's Row	A3	Broadwick Street	B2 C2	Cranbourn Street	C2 C3
Albemarle Street	B3	Brook Street	A2	Crosby Row	G4
Aldermanbury	G2	Brook's Mews	A2	Cursitor Street	E2
Aldersgate Street	F1	Bruton Lane	B3	Curzon Street	A3
Aldford Street	A3	Bruton Place	A3 B3	Davies Street	A2 A3
Aldwych	D2	Bruton Street	B3	Dean Street	C2
Alfred Place	C1	Buckingham Gate	B4	Dering Street	A2
Archer Street	C2	Bunhill Row	G1	Devonshire Mews South	A1
Argyll Street	B2	Bury Street	B3	Devonshire Mews West	A1
Arlington Street	B3	Cannon Street	G2	Devonshire Street	A1
Arundel Street	E2	Capper Street	B1 C1	Dodson Street	E4 F4
Balderton Street	A2	Carey Street	E2	Doughty Street	D1
Bayley Street	C1	Carlton Gardens	C3	Dover Street	B3
Baylis Road	E4	Carlton House Terrace	C3	Down Street	A3 A4
Beak Street	B2	Carmelite Street	E2	Downing Street	C4
Bear Lane	F3	Carnaby Street	B2	Drury Lane	D2
Beaumont Street	A1	Carter Lane	F2	Drury Lane	D2
Bedford Ave	C1	Catherine Place	B4	Duke Street	A2 B3
Bedford Place	D1	Cavendish Square	A2 B2	D'arblay Street	B2 C2
Bedford Row	D1 E1	Caxton Street	B4 C4	Earnshaw Street	C2
Bedford Square	C1	Chancery Lane	E2	Eastcastle Street	B2
Bedford Street	D3	Chandos Place	D3	Elm Street	E1
Bedfordbury	D3	Chapel Street	A4	Emerson Street	G3
Belgrave Square	A4	Charing Cross Road	C2	Endell Street	C2 D2
Belvedere Road	D4 E3	Charles Street	A3	Ewer Street	F3 F4
Berkeley Square	A3 B3	Charlotte Street	B1	Eyre Street Hill	E1
Berkeley Street	B3	Charterhouse Square	F1	Fann Street	F1 G1
Bernard Street	D1	Charterhouse Street	E1 F1	Farm Street	A3
Berners Street	B1 B2	Chenies Street	C1	Farringdon New Bridge	F2
Berwick Street	B2 C2	Chesterfield Hill	A3	Farringdon Road	E1
Binney Street	A2	Chicheley Street	D4 E4	Fetter Lane	E2
Birdcage Walk	B4 C4	Chiswell Street	G1	Fitzroy Square	B1
Blackfriars Bridge	F2 F3	City Road	G1	Fitzroy Street	B1
Blackfriars Road	F3 F4	Clarges Street	B3	Fleet Street	E2
Bloomsbury Square	D1	Clerkenwell Road	E1 F1	Floral Street	D2
Bloomsbury Street	C1	Cleveland Row	B3 B4	Foley Street	B1
Bloomsbury Way	D1 D2	Cleveland Street	B1	Fortune Street	G1
Bolton Street	B3	Clifford Street	B3	Foster Lane	G2
Bonhill Street	G1	Clipstone Mews	B1	Frith Street	C2
Borgough Road	F4	Clipstone Street	B1	Furnival Street	E1 E2
Borough High Street	G3 G4	Cockspur Street	C3	George Street	A2
Bourdon Street	A3 B2	Coleman Street	G2	Gilbert Street	A2
Bouverie St Temple Avenue	E2	Conduit Street	B2	Giltspur Street	F1 F2
Bow Street	D2	Consert Hall Approach	E3	Gloucester Terrace	D2 E2
Bread Street	G2	Constitution Hill	A4 B4	Golden Lane	G1
Bream's Buildings	E2	Coptic Street	C1 C2	Goodge Street	B1 C1
Brewer Street	B3 C2	Coral Street	E4	Gordon Square	C1
Brick Street	A3	Cornwall Road	E3	Gosfield Street	B1
Bridle Lane	B2	Cowcross Street	F1	Goswell Road	F1

Gower Street	C1	Hosier Lane	F1	Marylebone Road	A1
Grafton Street	B3	House Street	B1	Marylebone Street	A1
Grafton Way	B1	Howland Street	B1	Meard Street	C2
Gray's Inn Road	E1	Huntley Street	C1	Milk Street	G2
Great Chapel Street	C2	James Street	A2	Millman Street	D1
Great Dover Street	G4	Jermyn Street	B3 C3	Milton Street	G1
Great George Street	C4	John Carpenter Street	E2 F2	Mint Street	G4
Great Guildford Street	F3 G4	John Street	D1 E1	Monmouth Street	C2
Great James Street	D1	Kean Street	D2	Montague Place	C1
Great Marlborough Street	B2	Keeley Street	D2	Montague Street	C1 D1
Great Portland Street	B1 B2	Kemble Street	D2	Moorgate	G1 G2
Great Queen	D2	Keppel Street	C1	Morley Street	E4
Great Russell Street	C2	King Charles Street	C4	Mortimer Street	B1 B2
Great Scotland Yard	C3 D3	King Edward Street	F1 F2	Mount Row	A3
Great Suffolk Street	F4	King Street	B3	Mount Street	A3
Great Titchfield Street	B1	King William St	G2	Museum Street	C1 D2
Greek Street	C2	Kingly Street	B2	Neal Street	C2
Gresham Street	F2 G2	Kingsway	D2	New Bond Street	A2 B2
Greville Street	E1	Kirby Street	E1	New Cavendish Street	A1 B1
Grosvenor Crescent	A4	Lambeth Place Road	D4	New Compton Street	C2
Grosvenor Hill	A3 B2	Lancaster Place	D2 D3	New Fetter Lane	E1 E2
Grosvenor Place	A4	Langham Place	B1 B2	New Oxford Street	C2 D2
Grosvenor Square	A2	Langham Street	B1	New Row	C3 D2
Grosvenor Street	A2 A3	Lavindton Street	F3	Newgate Street	F2
Guilford Street	D1	Laystall Street	E1	Newman Street	B1 C2
Gutter Lane	G2	Leather Lane	E1	Noel Street	B2 C2
Half Moon Street	A3 B3	Lexington Street	B2 C2	North Audley Street	A2
Halkin Street	A4	Lincoln's Inn Fields	D2 E2	Northington Street	D1 E1
Hamilton Place	A4	Litchfield Street	C2	Northumberland Avenue	C3 D3
Hanover Square	B2	Little Britain	F1	Nottingham Place	A1
Hanson Street	B1	Loman Street	F4	Old Bond Street	B3
Harley Place	A1	London Bridge	G3	Old Compton	C2
Harley Street	A1	London Wall	G1	Old Jewry	G2
Harper Road	G4	Long Acre	D2	Old Park Lane	A4
Hatfields	E3	Long Lane	G4	Orange Street	C3
Hatton Garden	E1	Lower Marsh	E4	Orchard Street	A2
Haymarket	C3	Ludgate Hill	F2	Oxford Street	A2 B2
Hay's Mews	A3	Luxborough Street	A1	Paddington Street	A1
Headfort Place	A4	Malet Street	C1	Pall Mall	C3
Henrietta Place	A2	Manchester Street	A1 A2	Paris Garden	F3
Hertford Street	A3	Manciple Street	G4	Park Crescent	A1 B1
High Holborn	D1 D2 E1	Maple Street	B1	Park Lane	A3
Hill Street	A3	Marchmont Street	D1	Park Place	B3
Holborn Viaduct	E1 F2	Margaret Street	B2	Park Street	A3
Holland Street	F3	Marlborough Road	B3 B4	Park Street	G3
Holles Street	B2	Marshall Street	B2	Parker Street	D2
Hopton Street	F3	Marshalsea Road	G4	Parliament Square	C4 D4
Horse Guards Avenue	D3 D4	Marylebone High Street	A1 A2	Parliament Street	D4
Horse Guards Road	C3 C4	Marylebone Lane	A1 A2	Pearman Street	E4

Percy Street	C1	Southwark Street	F3	University Street	B1 C1
Peter Street	C2	Spur Road	B4	Upper Ground	E3
Peter's Lane	F1	St Andrew Street	E1 E2	Upper Marsh	E4
Petty France	B4 C4	St Ann's Street	C4	Upper Thames Street	G2 G3
Phoneix Place	E1	St Bride Street	F2	Vere Street	A2
Piccadilly	A4 B3	St Cross Street	E1	Victoria Embankment	D3 D4 E2 F2
Pilgrimage Street	G4	St Georges Street	B2	Victoria Street	C4
Portland Place	A1 B1	St George's Circus	F4	Vigo Street	B3
Portpool Lane	E1	St Giles High Street	C2	Viktoria Embankment	D3
Princes Street	B2	St James's Place	B3	Villiers Street	D3
Queen Anne Street	A1 A2	St James's Rose & crown Yard	B3	Walbrook Court	G2
Queen Street	G2	St James's Square	B3 C3	Wardour Street	C2
Queen Victoria Street	F2 G2	St James's Street	B3	Warwick Street	B2 B3
Ramillies Place	B2	St John Street	F1	Waterloo Bridge	D3 E3
Rathbone Street	B1 C1	St John's Square	F1	Waterloo Road	E3 E4
Ray Street	E1	St Margaret Street	D4	Watling Street	G2
Redcross Way	G4	St Margaret Street	D4	Waverton Street	A3
Reeves Mews	A3	St Martin's Lane	C2 C3	Webber Street	E4 F4
Regent Street	B2 B3 C3	St Martin's Le Grand	F2	Welbeck Street	A1 A2
Rennie Street	F3	St Martin's Place	C3	Wells Street	B2
Richmond Terrace	D4	St Paul's Churchyard	F2	West Smithfield Long Lane	F1
Ridgmount Street	C1	Stamford Street	E3	West Street	C2
Ropemaker Street	G1	Stanhope Gate	A3	Westminster Bridge	D4
Rupert Street	C2	Stones End Street	G4	Westminster Bridge Road	E4
Russell Square	C1	Store Street	C1	Westmoreland Street	A1
Russell Street	D2	Strand	D2 D3 E2	Weymouth Street	A1
Saffron Hill	E1	Stratton Street	B3	White Lion Hill	F2
Sandland Street	D1 E1	Sumner Street	F3 G3	Whitecross Street	G1
Savile Row	B2 B3	Sutton Row	C2	Whitehall	C3 C4
Savoy Place	D3	Tabard Street	G4	Whitehall Place	C3 D3
Shaftesbury Avenue	C2	Tavistock Street	D2	Whitehorse Street	A3 B3
Shelton Street	C2 D2	Temple Place	E2	Whitfield Street	B1 C1
Shoe Lane	E2	The Mall	C4	Wigmore Street	A2
Short's Gardens	C2 D2	Theobald's Road	D1	Wild Court	D2
Silk Street	G1	Thrale Street	G3	Wild Street	D2
Snow Hill	F1 F2	Torrington Place	C1	William IV Street	C3 D3
Soho Square	C2	Torrington Square	C1	Wimpole Street	A1
South Audley Street	A3	Tothill Street	C4	Windmill Street	C1
South Molton Street	A2	Tottenham Court Road	B1 C1	Wood Street	G2
South Street	A3	Tower Street	C2	York Bridge	A1
Southampton Place	D1	Trafalgar Square	C3	York Buildings	D3
Southampton Row	D1	Tudor Street	E2 F2	York Road	E4
Southwark Bridge	G3	Ufford Street	E4 F4	Zoar Street	F3
Southwark Bridge Road	F4 G3	Union Street	E4 F4 G4		